



KALO GOLD

Vatu Aurum: Where the Ring of Fire Yields Fijian Gold

TSX-V: KALO

Forward Looking Statement



General Disclaimer

This presentation of Kalo Gold Corp. (the "Company" or "Kalo") is for information only and shall not constitute an offer to buy, sell, issue or subscribe for, or the solicitation of an offer to buy, sell or issue, or subscribe for any securities in any jurisdiction in which such offer, solicitation or sale would be unlawful. The information contained in this presentation: (a) is provided as at the date of this presentation and is accurate only as of the date of this presentation or the date otherwise indicated, and is subject to change without notice; (b) does not purport to contain all the information that may be necessary or desirable to fully and accurately evaluate an investment in the Company, including important disclosures relating to the terms of an investment and risk factors associated with an investment in the Company; and (c) is not to be considered as a recommendation by the Company that any person make an investment in the Company. Where any opinion or belief is expressed in this presentation, it is based on the assumptions and limitations mentioned herein and are an expression of present opinion or belief only. No warranties or representations can be made as to the origin, validity, accuracy, completeness, currency or reliability of the information. The Company disclaims and excludes all liability (to the extent permitted by law), for losses, claims, damages, demands, costs and expenses of whatever nature arising in any way out of or in connection with the information in this presentation, its accuracy, completeness or by reason of reliance by any person on any of it. The information in this presentation is not intended to be relied upon as advice to investors or potential investors and does not take into account the investment objectives, financial situation or needs of any investor. This presentation should not be construed as legal, financial or tax advice to any individual, as each individual's circumstances are different. Readers should consult with their own professional advisors regarding their particular circumstances. Neither this presentation nor any copy of it may be taken or transmitted into or distributed in any other jurisdiction which prohibits the same, except in compliance with applicable securities laws. Any failure to comply with this restriction may constitute a violation of applicable securities law. Recipients are required to inform themselves of, and comply with, all such restrictions or prohibitions and the Company does not accept liability to any person in relation thereto. Securities legislation in certain Canadian provinces provides purchasers, in addition to any other rights they may have at law, with a remedy for rescission or damages where an offering memorandum, which this presentation may be deemed to be, or any amendment to it, contains a misrepresentation. Please see Appendix A for more details.

This presentation does not constitute an offer to sell or the solicitation of an offer to buy, nor shall there be any sale of securities of the Company in any jurisdiction in which an offer, solicitation or sale would be unlawful prior to registration or qualification under the securities laws of such jurisdiction. The securities of the Company described herein have not been and will not be registered under the United States federal or state securities laws and may not be offered or sold in the United States, or to, or for the account or benefit of, "U.S. Persons" as such term is defined in Regulation S under the United States Securities Act of 1933, as amended (the "1933 Act"), unless an exemption from registration is available. Prospective investors will be required to represent, among other things, that they meet the definition of "accredited investor" (as defined in Rule 501(a) of the 1933 Act) and are familiar with and understand the terms of the offering and have all requisite authority to make an investment. Securities sold in the United States will be "restricted securities" within the meaning of Rule 144 under the 1933 Act. The securities may be resold, pledged or otherwise transferred only pursuant to an effective registration statement under the 1933 Act or pursuant to an applicable exemption from the registration requirements of the 1933 Act. IN MAKING AN INVESTMENT DECISION, INVESTORS MUST RELY ON THEIR OWN EXAMINATION OF THE COMPANY AND THE TERMS OF THE OFFERING, INCLUDING THE MERITS AND RISKS INVOLVED. THE SECURITIES HAVE NOT BEEN APPROVED OR DISAPPROVED BY THE SECURITIES AND EXCHANGE COMMISSION OR BY ANY STATE OR CANADIAN SECURITIES COMMISSION OR REGULATORY AUTHORITY, NOR HAS ANY OF THE FOREGOING PASSED ON THE ACCURACY OR ADEQUACY OF THIS PRESENTATION. ANY REPRESENTATION TO THE CONTRARY IS A CRIMINAL OFFENSE.

Cautionary Note Regarding Forward-Looking Statements: This presentation includes information, statements, beliefs and opinions concerning the business, operations and financial performance and condition of the Company, which constitute forward-looking statements under applicable Canadian securities laws, and can be identified by the use of language such as "plans", "expects", "is expected", "budget", "scheduled", "estimates", "forecasts", "intends", "anticipates", "believes", or variations or comparable language of such words and phrases or statements that certain actions, events or results "may", "could", "would", "should", "might" or "will be taken", "occur" or "be achieved" or the negative connotation thereof. Forward-looking statements in this presentation include statements regarding: the Company's belief that it has a star mineral property in the making; the Company's expectations regarding its ability to obtain the permits, licenses and credentials required to continue operating the Property; estimated mineral reserves and mineral resources; the realization of mineral reserve estimates; the future price of gold; proposed exploration programs; and the ability of the Company to sustain and project capital expenditures required to continue operations with respect to the Property. By their nature, forward-looking statements involve a number of risks, uncertainties and assumptions that could cause actual results or events to differ materially from those expressed or implied by the forward-looking statements. These risks, uncertainties and assumptions could adversely affect the outcome and financial effects of the plans and events described in this presentation. Such risks, uncertainties and other factors include: fluctuations in the price of gold; opposition to development and mining operations by one or more groups of indigenous people; actions that impede or prevent the operations of the Company's exploration or mining activities; the inability to develop and operate the Company's mineral properties; social unrest and political or economic instability and uncertainties in the jurisdictions in which the Company operates; the timing and ability to maintain and, where necessary, obtain and renew necessary permits and licenses; changes in national and local government legislation, taxation and controls or regulations; environmental and other governmental regulation compliance; uncertainty in the estimation of mineral resources and mineral reserves; fluctuations in currency exchange rates; infrastructure risks, including access to roads, water and power; and the timing and possible outcome of pending or threatened litigation and the risk of unexpected litigation.

Forward-looking statements in this presentation are based on management's current estimates, expectations and projections, which management believes are reasonable as of the current date. Assumptions have been made regarding, among other things: the Company's expected performance and ability to implement operational improvements for the Property; the Company's ability to carry on exploration and development activities, including land acquisition and construction; the timely issuance and/or re-issuance upon expiration of permits and other approvals; the availability and sufficiency of power and water for operations; the price of gold; prices for key exploration and mining supplies, including labor costs and consumable; plant, equipment and processes operating as anticipated; there being no material variations in the current tax and regulatory environment; the Company's ability to operate in a safe, efficient and effective manner; the exchange rates between the Canadian dollar and the Fiji dollar, remaining consistent with current levels; and the Company's ability to obtain financing as and when required and on reasonable terms.

You should not place undue reliance on forward-looking statements, which are based on the information available as of the date of this presentation. The Company disclaims any intention or obligation to update or revise any forward-looking statements contained in this presentation, whether as a result of new information, future events or otherwise, unless required by applicable law. The forward-looking statements included in this presentation are expressly qualified by this cautionary statement.

The technical information in this presentation was reviewed by Andrew Randell, P. Geo a qualified person as defined by National Instrument 43-101. The independent report filed on SEDAR titled "Independent NI 43-101 Technical Report on the Vatu Aurum Gold Project", amended September 9, 2021, contains full disclosure with regards to historical resource estimates referenced in this presentation.



Kalo Gold Corp is focused on the discovery and exploration of multiple epithermal gold systems within the district scale Vatu Aurum Project, Fiji.

The Vatu Aurum Project, encompassing **367 km²**, is our primary focus, representing a significant opportunity in the Pacific's "Ring of Fire."

The Kalo Team

commitment, pride and focus on geology and exploration - providing an exciting path to discovery



Our Vision: To transform the Vatu Aurum Project into a world-class, multi-deposit gold district.



Our Mission: Unlock the full potential of district-scale epithermal gold systems through sustainable exploration.

Investment Highlights



Fiji's Next World-Class Epithermal Gold District



100%

100% ownership

367 km² district-scale property located along the Nubu Graben Fault



World-Class Region

Hundreds of millions of ounces of gold and copper produced, and large amounts in reserves



CAD\$30M in Exploration Data

Extensive geophysical, geochemical, and drilling data collected over 30 years



Recent Discoveries

Over 18 intact epithermal upwelling zone targets identified in the Aurum Epithermal Field (Namalau, Loma and Buca Trends) and multiple gold targets in the Qiriyaga Complex (diatremes and associated surge deposits)



Experienced Technical Team

CEO Terry L. Tucker, P.Geo, with 30+ years in mineral exploration, and Andy Randell, P.Geo, of SGDS Hive, driving innovative exploration



Phase 1 Drill Campaign

A 11 hole drill program tested both Dua and Rua on the Namalau Trend's upwelling zones and QC1 in the Qiriyaga Complex

Capital Structure






TSXV: KALO

Share Capital	117,531,303
Stock Options	2,892,500
Warrants (\$0.08)	51,460,085
RSUs & DSUs	4,155,274
Fully Diluted	176,039,162

*Information as of January 20th, 2026



Institutions 52% 
Insiders 18%  Retail 30% 


Management Team



MANAGEMENT & BOARD OF DIRECTORS

- ▶ **TERRY L. TUCKER, P.GEO**
Director, President and CEO
- ▶ **KEVIN MA, CPA, CA EVP,**
Director & Executive Vice
President, Capital Markets,
CFO & Corporate Secretary
- ▶ **MICHAEL NESBITT, BSC**
Director, Co-Founder, Senior
In-Country Manager
- ▶ **DAVID WHITTLE, CPA, CA**
Chairman
- ▶ **CAM GRUNDSTROM**
Mining Engineer
Co-Founder
- ▶ **DICKSON LAM**
Ascentas Capital Management

GEOLOGICAL & TECHNICAL TEAM

- ▶ **ANDY RANDELL,** 
P. Geo, (Qualified Person)
- ▶ **CALEY DUNLOP, B.SC. GEOLOGY &
ENVIRONMENTAL STUDIES**
Mineral Exploration Scientist
- ▶ **ZACH BUEHLER, B.SC. GEOLOGY**
Mineral Exploration Scientist
- ▶ **PATRICK SAVAGE, B.SC. GEOLOGY, GIT**
Junior Geologist
- ▶ **LAUREN REID, B.SC. HONOURS,
ENVIRONMENTAL SCIENCE & GEOLOGY**
Senior Field Technician
- ▶ **JENNIFER PRINCIPE, B.SC. EARTH
SCIENCES, GIT**
Junior Geologist
- ▶ **ZAK BAKER, B.SC. GEOLOGY**
Field Technician
- ▶ **JENNIFER SLY, BACHELOR OF ARTS (B.A.)**
Safety and Sustainability Lead

SPECIAL ADVISORS

- ▶ **PAUL HARBIDGE, BSC, MSC**
Former SVP, Exploration at Goldcorp
President and CEO, Faraday Copper Corp.



FARADAY COPPER

- ▶ **ALASTAIR STILL, MSC**
Former Director of Corp Dev at Newmont
CEO at GoldMining Inc.
Co-Founder and Chairman of U.S.
GoldMining Inc.

GOLDMINING

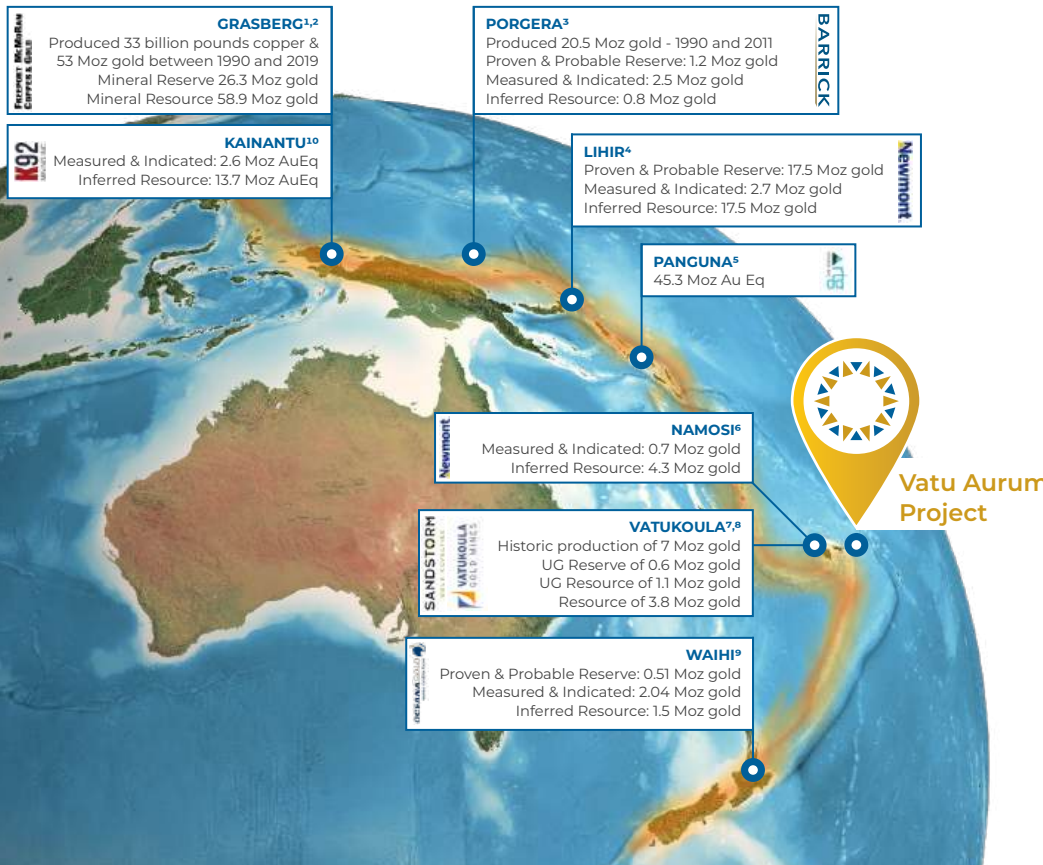
- ▶ **DAVID MEDILEK, P.ENG, CFA**
President and COO at K92 Mining Inc.

K92
MINING INC.

Ring of Fire



The Land of Giant Gold Deposits



Kalo Gold Advantage

Positioned to deliver major discoveries in this proven gold belt



Epithermal Gold Systems

Intense volcanic and tectonic activity creates rich deposits



Prolific Region

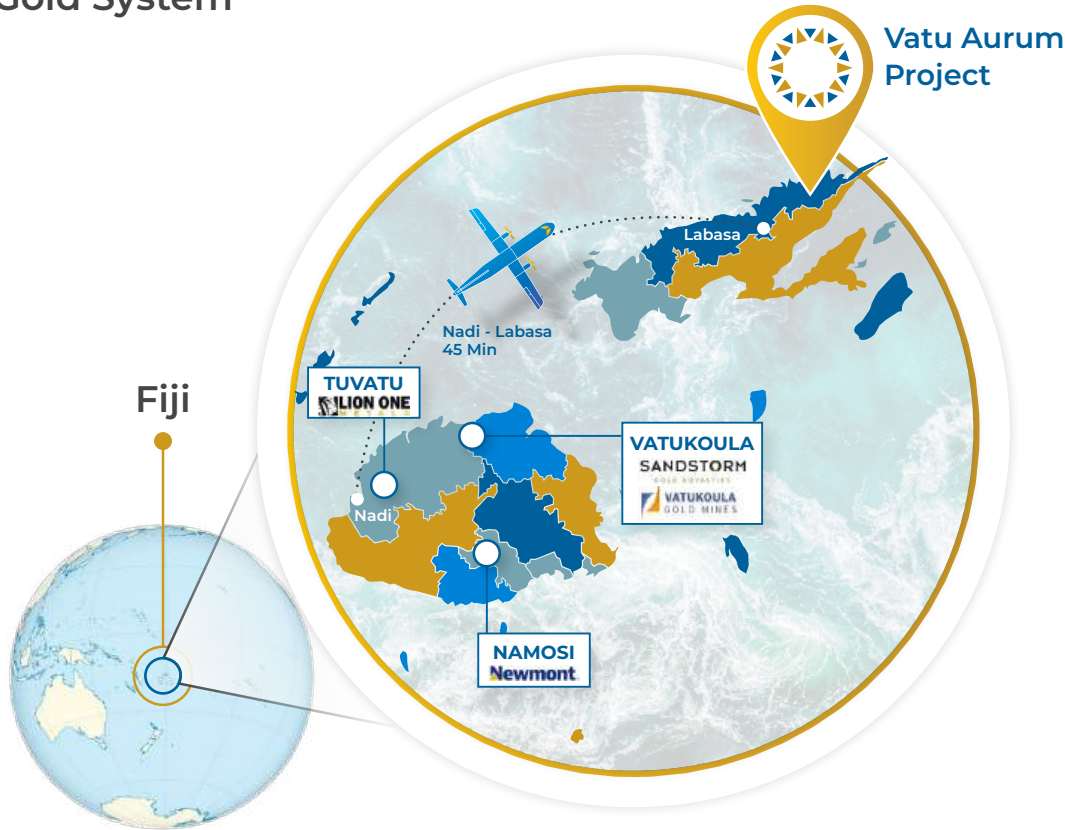
249 Moz of Gold and 33 B lbs of copper discovered to date

- ▶ 1 Freeport-McMoRan
- ▶ 2 Freeport-McMoRan 31 Dec 2022
- ▶ 3 Barrick Gold Corp
- ▶ 4 Newmont
- ▶ 5 RTG Mining Inc
- ▶ 6 Newmont
- ▶ 7 Sandstormgold
- ▶ 8 Vatukoula Gold Mines
- ▶ 9 Oceana Gold
- ▶ 10 K92 Gold

Note: Details of other mines and resources is provided for information only and is not necessarily an indication of potential size, grades or production potential of Kalo projects

Gold in Fiji

Unveiling Fiji's Next Epithermal Gold System



Location

On Fiji's Vanua Levu Island in a premier geological setting



Scale

367 km² package with multiple targets along the 28 km long Nubu Graben



History

Vatukoula Gold Mine has produced 7 Moz gold¹, Newmont is advancing the 5 Moz gold Namosi Project² and Tuvatu Gold Mine was recently put into production

▶ 1 Vatukoula Gold Mines
▶ 2 Newmont

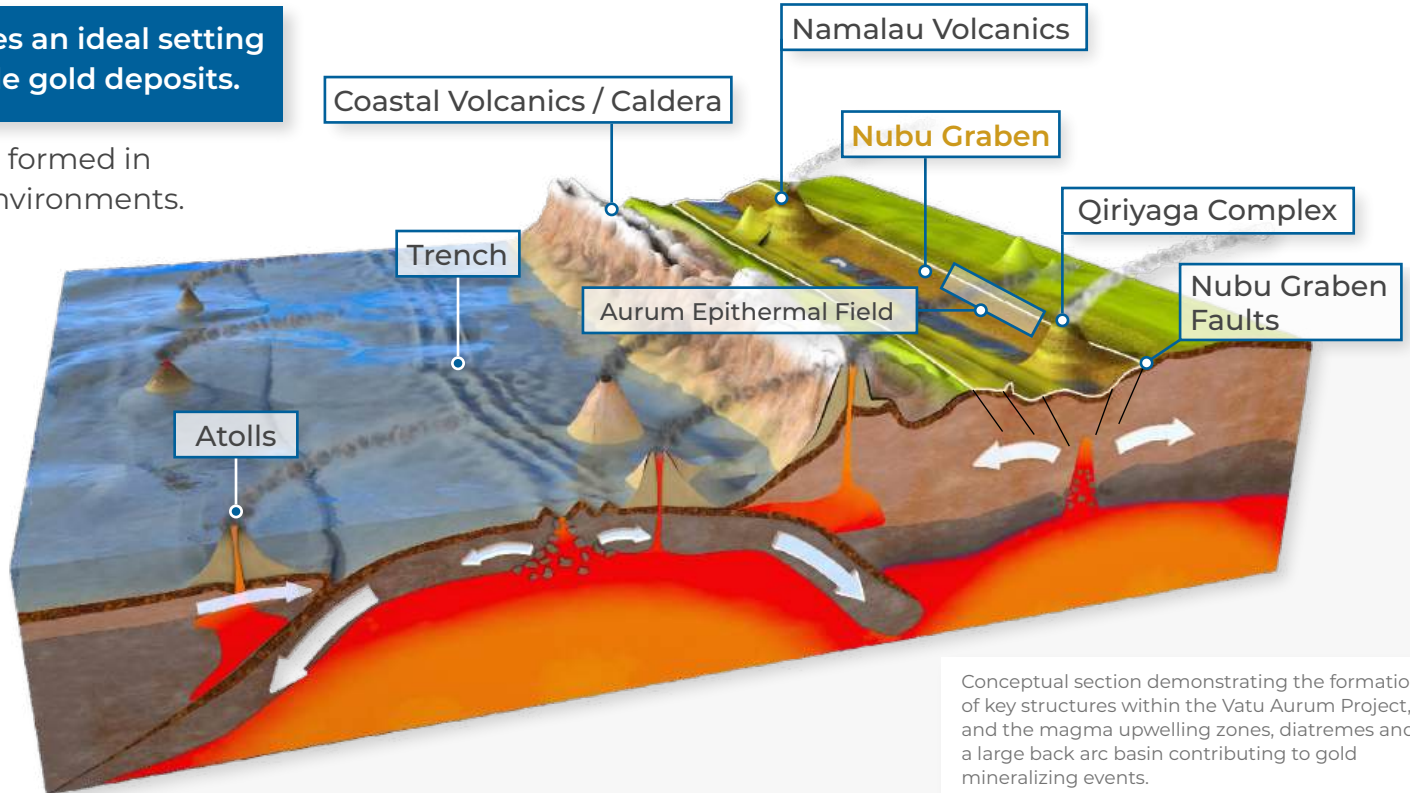
Fiji Geological Section



Nubu Back-arc Basin

Fiji's geology creates an ideal setting for large, high-grade gold deposits.

Epithermal systems formed in dynamic volcanic environments.



Conceptual section demonstrating the formation of key structures within the Vatu Aurum Project, and the magma upwelling zones, diatremes and a large back arc basin contributing to gold mineralizing events.

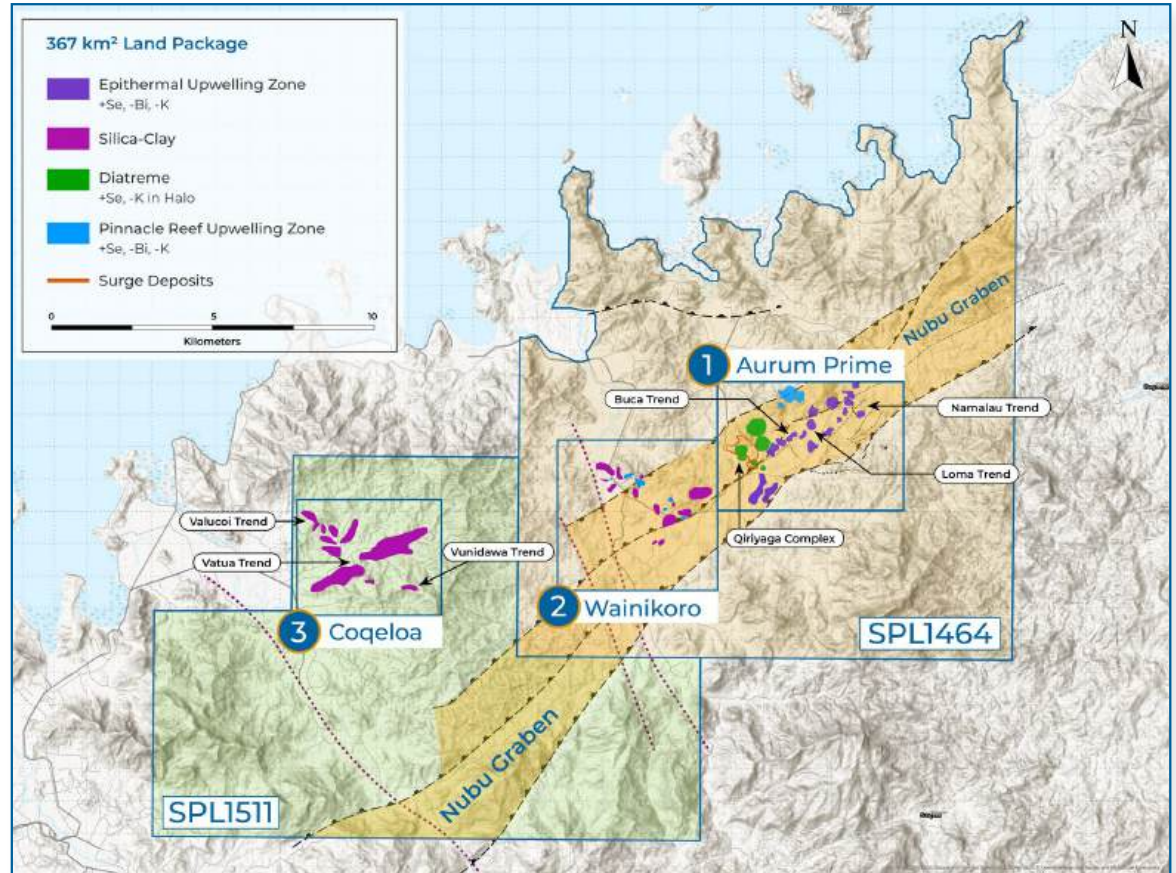
Vatu Aurum Project



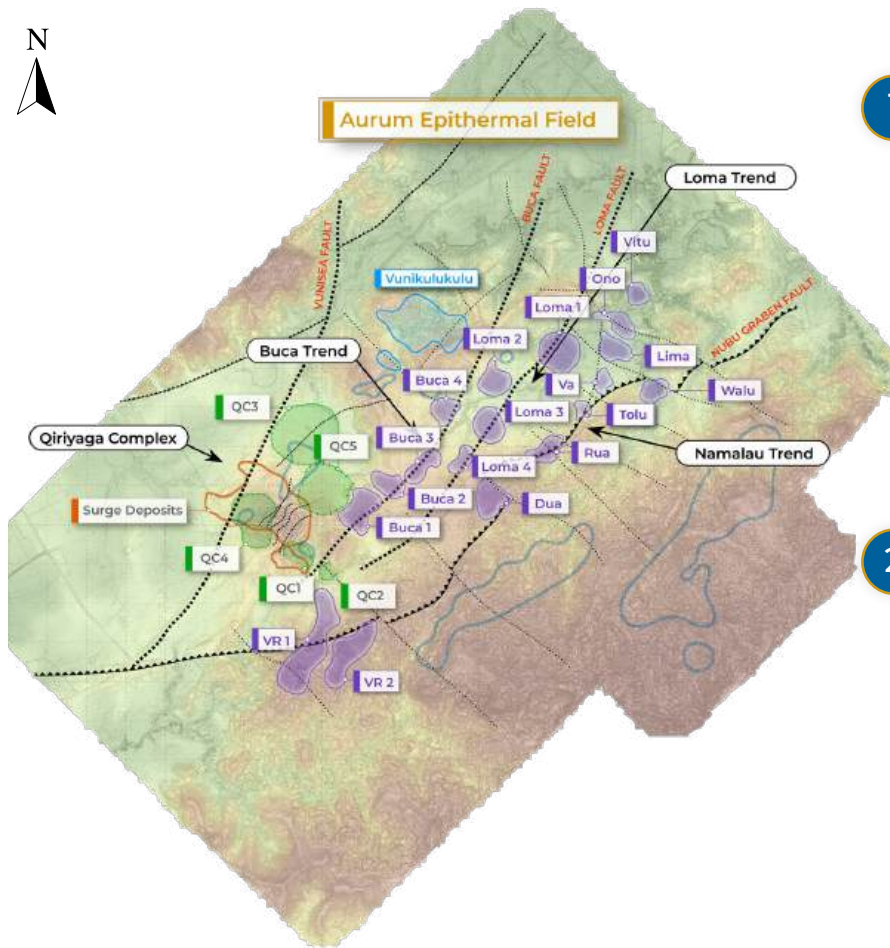
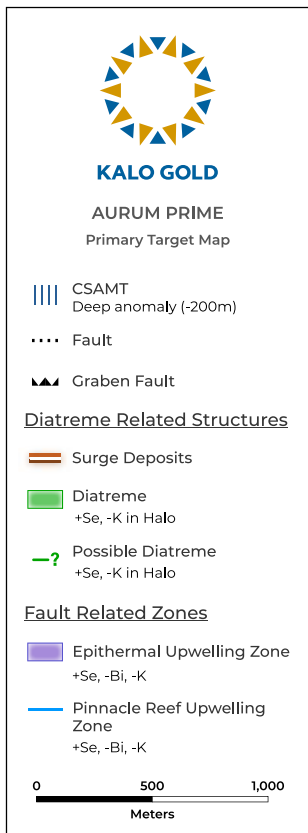
A District-Scale Opportunity

Anchored in the >28 km Nubu Graben.

- 1 Aurum Prime
- 2 Wainikoro
- 3 Coqeloa



Aurum Prime - Two Mineralization Styles



1

Vein - Hosted Epithermal Corridors (Namalau – Loma – Buca)

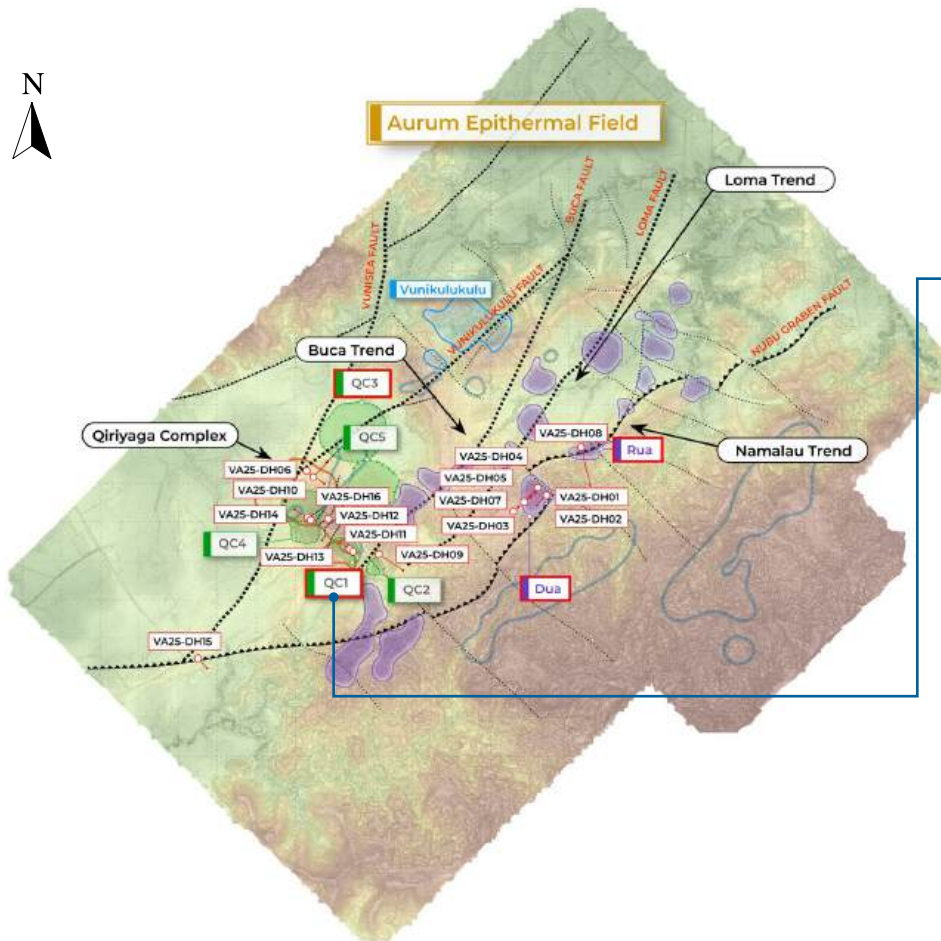
- ▶ Quartz veins & breccias along NE faults with strong Se–As–Sb–Hg–Tl signature
- ▶ Preserved sinter & bladed quartz — vertically intact low-sulphidation system

2

Diatreme / Surge Systems (Qiriyaga Complex)

- ▶ Maar-diatreme vents mineralized in breccia matrices & surge horizons
- ▶ High-grade shoots within preserved phreatomagmatic system (>400 m deep potential)

Phase 1 drilling - 2436.7 meters (11 holes)



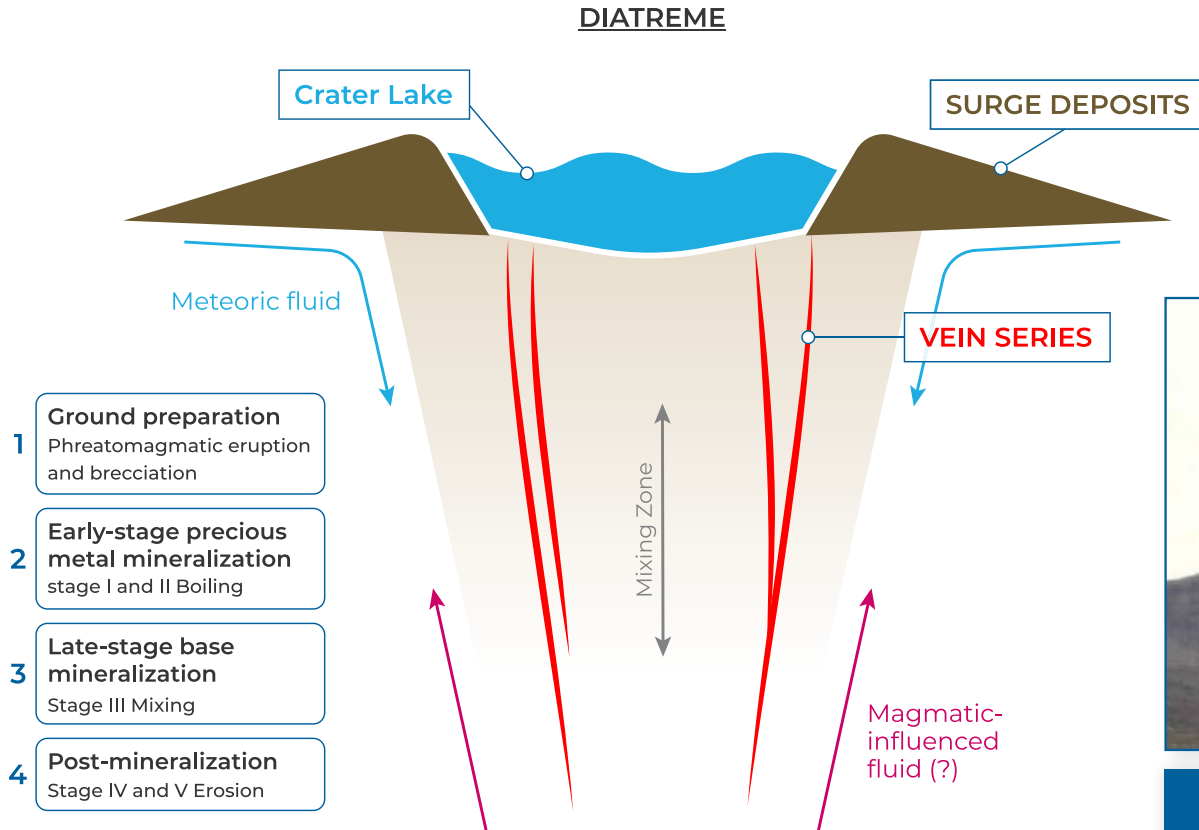
VA25-DH11 (QC1)

22.12 m @ 12.80 g/t Au including:

- ▶ 9.02 m @ 3.20 g/t Au
- ▶ 10.05 m @ 25.10 g/t Au
 - ▶ (incl. 7.00 m @ 35.01 g/t Au)
 - ▶ (incl. 1.00 m @ 83.30 g/t Au)

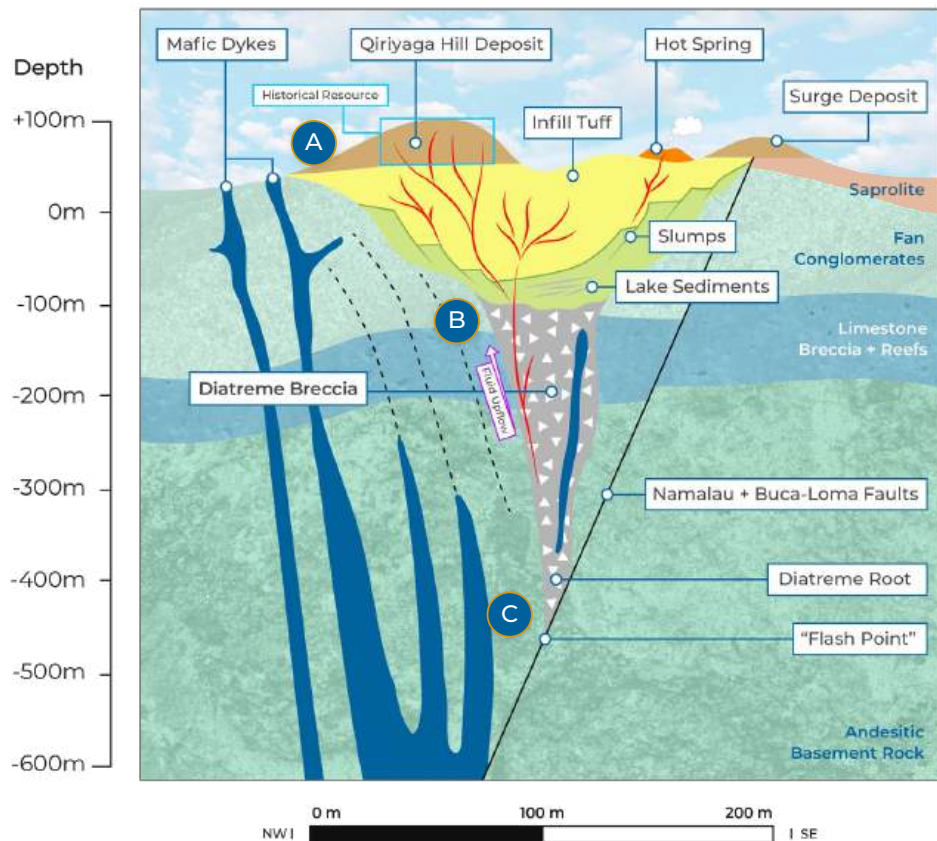
(true width of 20.70 m from 43.48 m depth)

Diatreme Deposit Model



Taal Volcano, Philippines
(phreatomagmatic eruption)

Qiriyaga Complex Deposit Model



A Historical drilling focused on the Qiriyaga Hill (QH) Gold Deposit in which the high grade gold is hosted in “ring faults” found within the surge deposit and lake sediments.

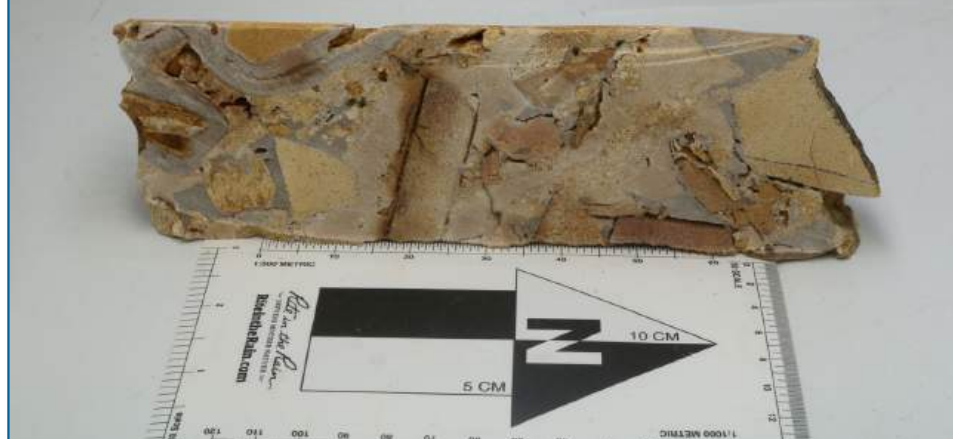
B VA25-DH11 (drilling from inside the diatreme) intersected the gold rich mineralized diatreme-margin breccia. This is interpreted as the “fluid upflow” or “feeder zone” to the historical QH Gold Deposit.

C QC1 Diatreme intersects the Namalau and Buca Faults at 395 m depth.

VA25-DH11 (62.80-63.00 m) – 18.10 g/t Au



Sample: VA25-DH11-15
Depth: 62.8-63m
Target: QC1
Project: VATU AURUM, FIJI



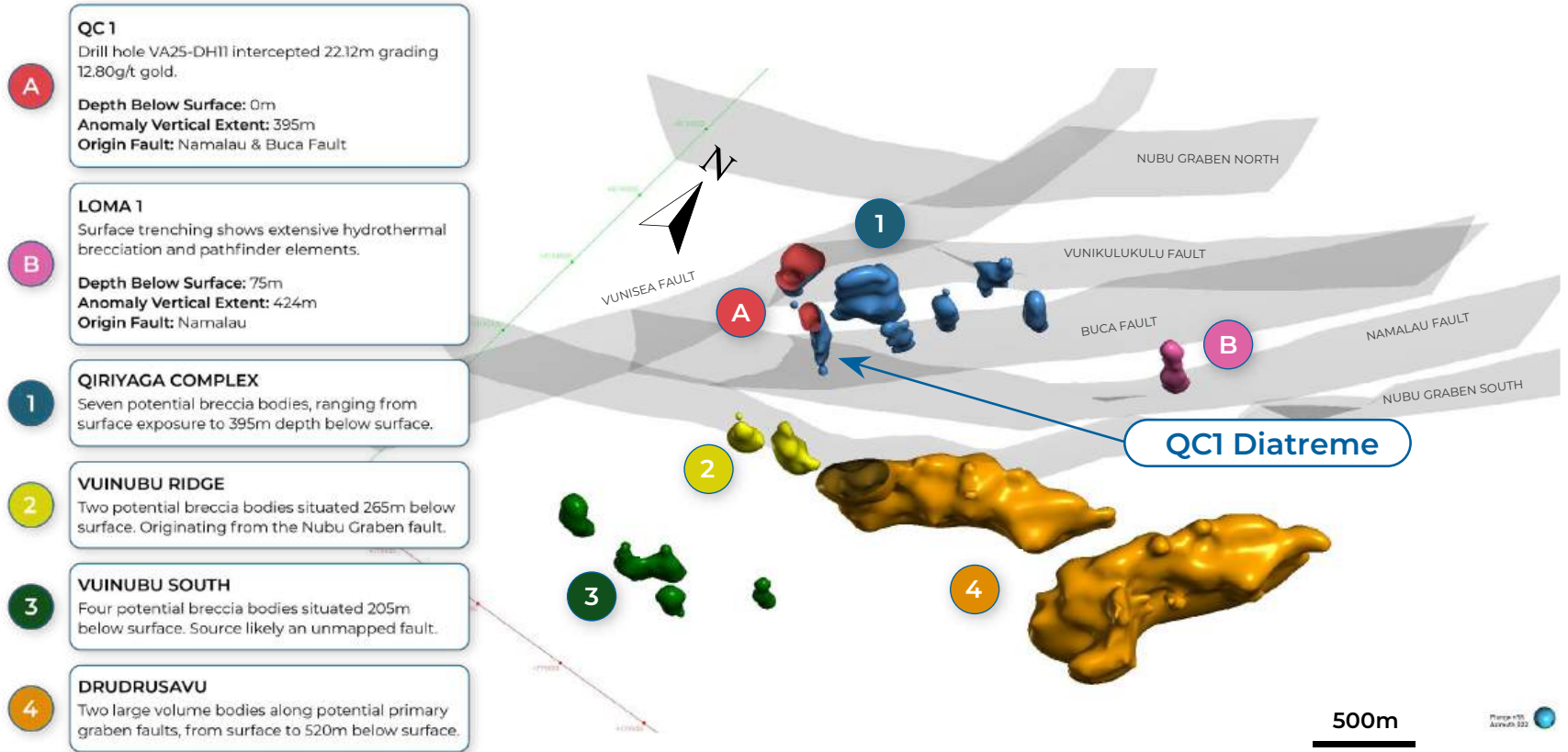
22.12 m @ 12.80 g/t Au including:

- ▶ 9.02 m @ 3.20 g/t Au
- ▶ 10.05 m @ 25.10 g/t Au
 - ▶ (incl. 7.00 m @ 35.01 g/t Au)
 - ▶ (incl. 1.00 m @ 83.30 g/t Au)

(true width of 20.70 m)
(from 43.48 m depth)

▶ Chalcedonic quartz-cemented hydrothermal breccia

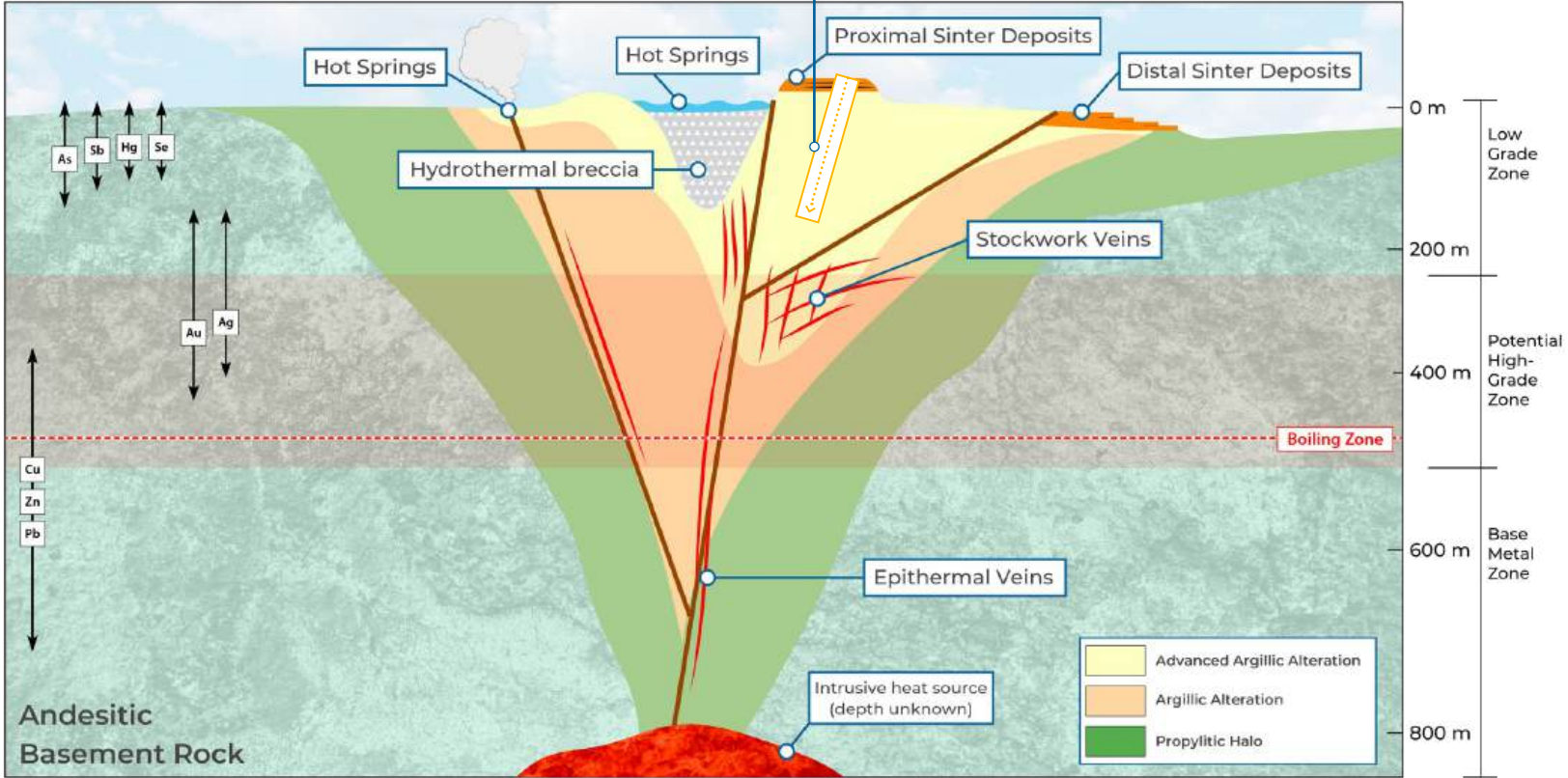
Geophysical Resistivity Model (3D-CSAMT) and Structural Interpretation



Namalau, Loma & Buca Deposit Model



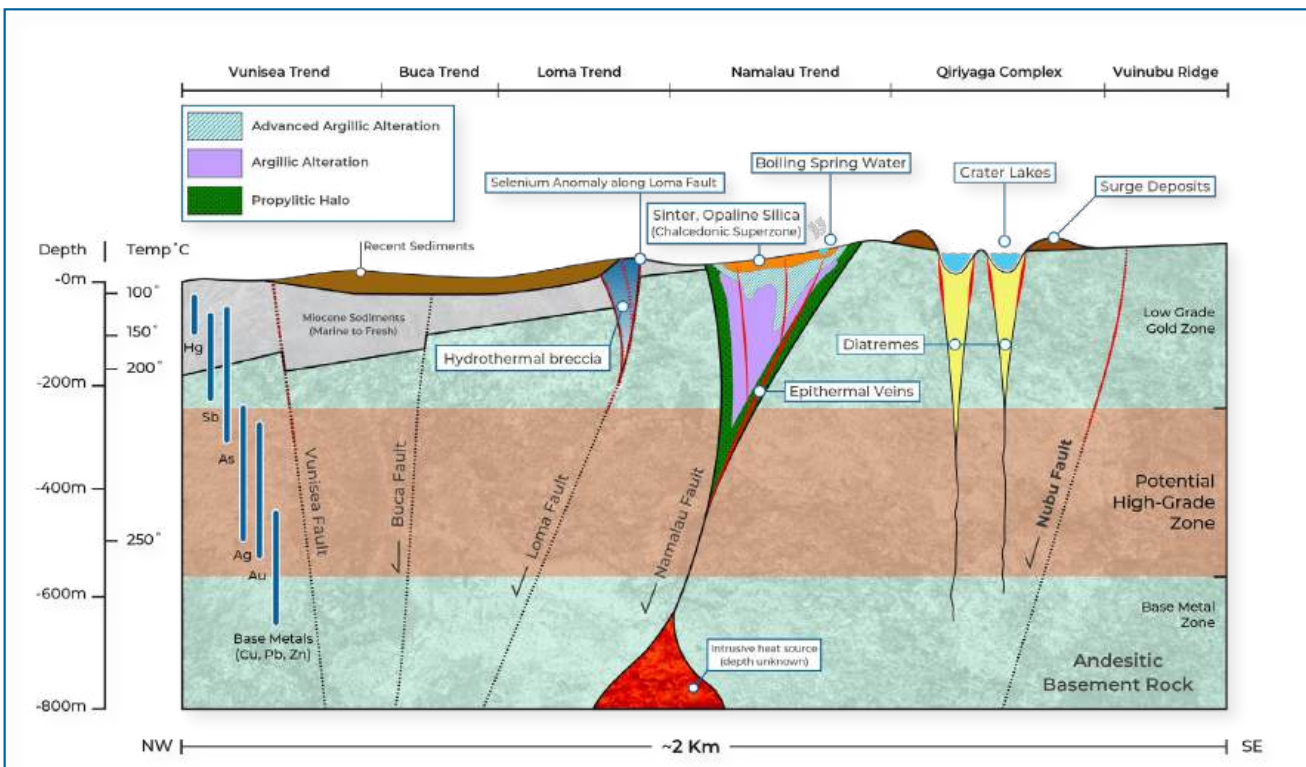
VA25-DH07 (Vertical depth 212)



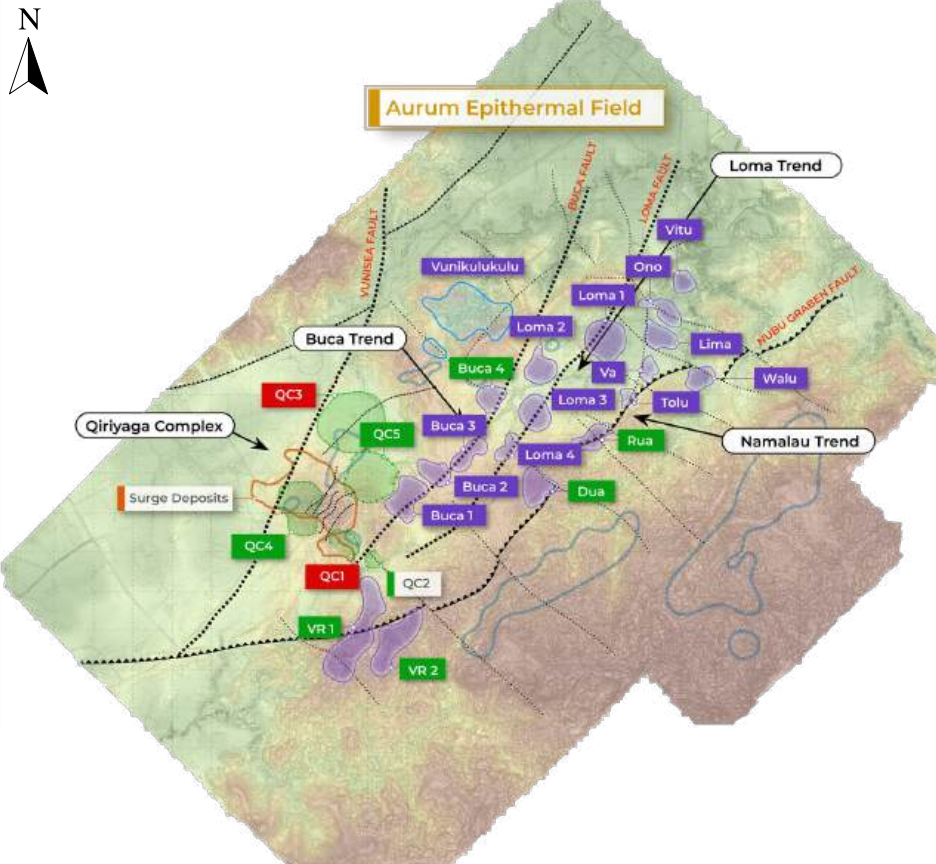
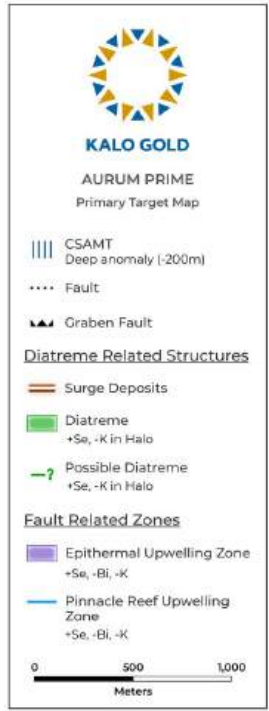
Aurum Epithermal Field Geological Model



Namalau, Loma and Buca Trend



Significant Pipeline of Highly Prospective Exploration Targets



Epithermal Upwelling Zones

▶ 18

Diatremes

▶ 5+ surfaced interpreted

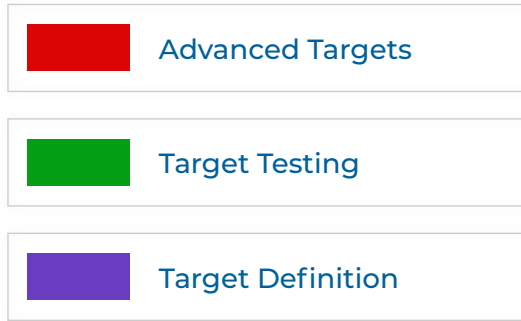
Breccia Bodies

▶ 16 high resistivity anomalies

Regional Targets

▶ 2

Increasing Data Confidence



Cross-Section

Comparison of Aurum Prime Targets to Waihi District Deposits

Waihi operation is located in the Waihi township on the North Island of New Zealand within a district that has produced 8 Moz of gold to date.



Aurum Prime Targets Cross Section



Waihi District Cross Section

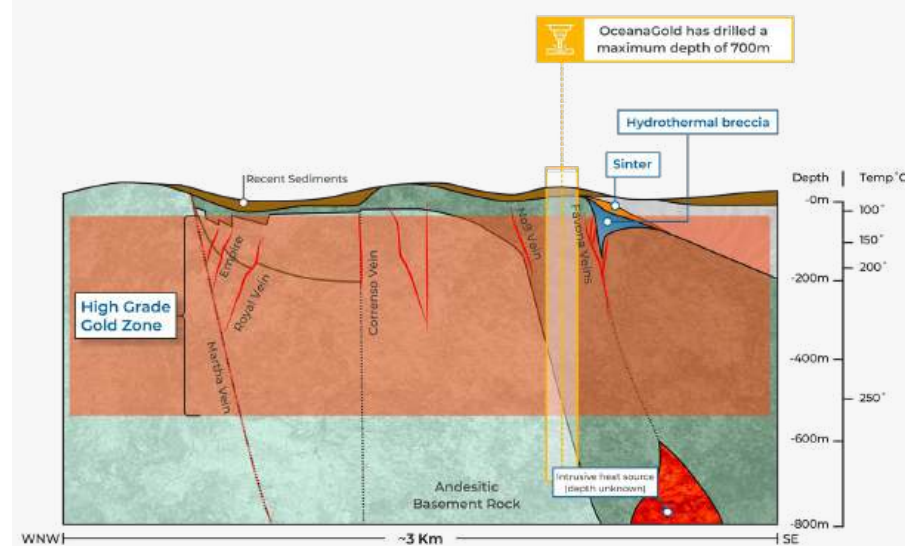
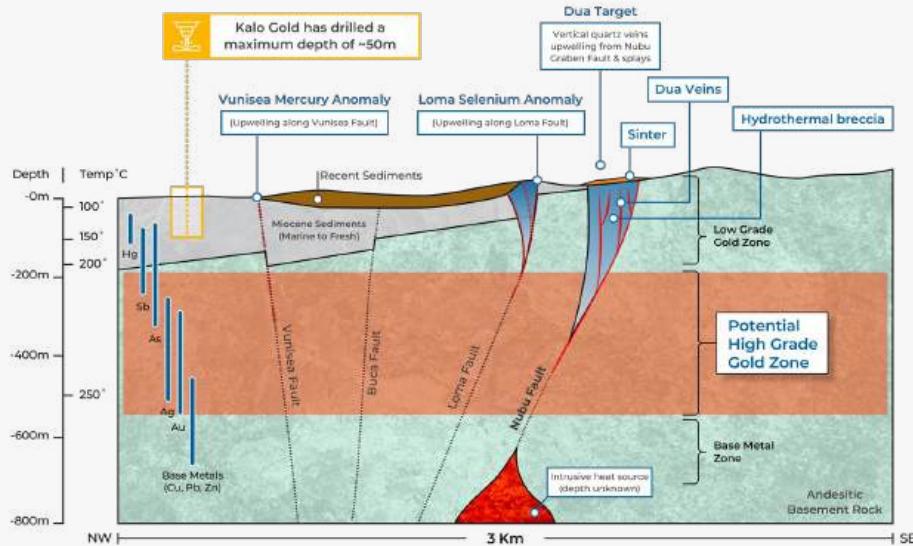


Early exploration stage;
no formal resource estimate

>3 km across multiple
epithermal vein systems

>8M oz historical production,
and M&I of 1.52M oz gold

>3 km across
multiple vein systems



Sustainability & Community Development



Kalo Gold Corp prioritizes sustainable exploration by engaging communities, respecting heritage, and minimizing environmental impact with modern, low-impact techniques.

Responsible Consumption & Production

Minimizing environmental impact through responsible resource management and sustainable exploration methods

Climate Action

Adopting industry best practices to reduce emissions and ecological footprints during operations

Life on Land

Committed to environmental stewardship by preserving ecosystems, rehabilitating disturbed areas, and minimizing surface impact



Decent Work and Economic Growth

Prioritizing local employment by hiring and training Fijian workers
Supporting economic development in local communities through sustainable exploration practices

Gender Equality

Promoting inclusivity and equal opportunities within the workforce, supporting women in leadership and operational roles

Clean Water and Sanitation

Ensuring responsible water use and protecting local water sources through proper exploration and environmental management practices

Partnerships for the Goals

Fostering partnerships with communities, governments, and industry to align exploration with regional development goals

Thank You



KALO GOLD

TSX-V: KALO



▶ Turani, Wolfoo and Honey

▶ Kalo Gold Corp.

Vancouver, British Columbia,
Canada.

kalogoldcorp.com

Terry Tucker

terry@kalogoldcorp.com

Kevin Ma

kevin@kalogoldcorp.com