



GOLIATH
RESOURCES LIMITED

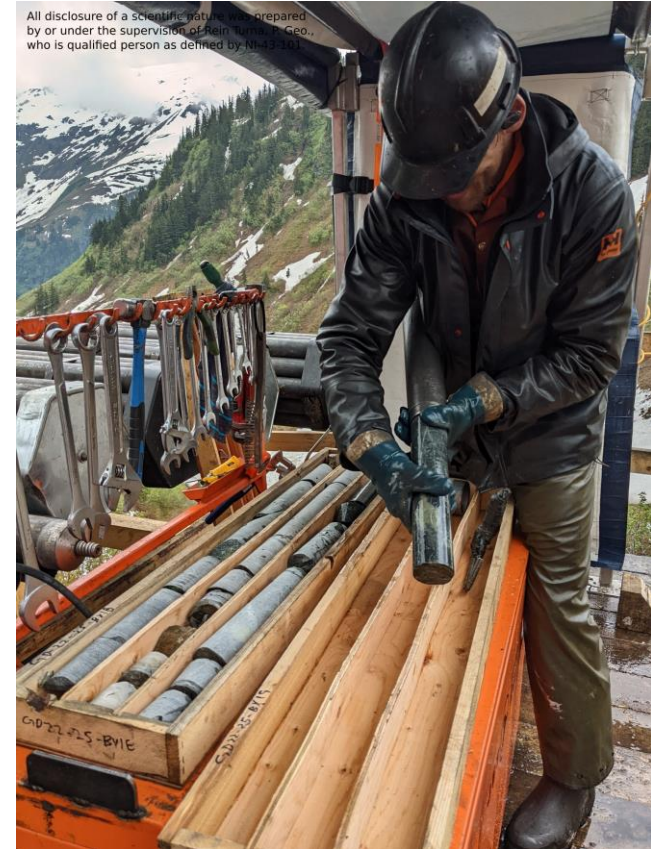
TSX-V: GOT OTCQB: GOTRF FSE: B4IF

ON TRACK WITH DISCOVERY IN THE GOLDEN TRIANGLE, B.C.



Golddigger - Surebet Zone
Drilling on the Northwest Step-out Pad

August 8, 2022





FORWARD LOOKING STATEMENT

The content of information contained in this Presentation has not been approved by an authorised person within the meaning of the Financial Services and Markets Act 2000 ("FMSA"). Reliance upon this Presentation for the purpose of engaging in any investment activity may expose an individual to a significant risk of losing all of the property or other assets invested. If any person is in any doubt as to the contents of this Presentation, they should seek independent advice from a person who is authorized for the purposes of FMSA and who specialises in advising in investments of this kind. This Presentation is being supplied to you solely for your information.

While the information contained herein has been prepared in good faith, neither Goliath Resources Limited ("Company") nor its shareholders, directors, officers, agents, employees or advisers give, has given or has authority to give, any representations or warranties (express or implied) as to, or in relation to, the accuracy, reliability or completeness of the information in this Presentation, or any revision thereof, or of any written, audiovisual or oral information made or to be made available to any interested party or its advisers and liability therefore is expressly disclaimed.

This Presentation does not constitute, or form part of, an admission document, listing particulars or a prospectus relating to the Company, nor does it constitute, or form part of, any offer or invitation to sell or issue, or any solicitation of any offer to purchase or subscribe for, any shares in the Company nor shall it or any part of it, or the fact of its distribution, form the basis of, or be relied upon in connection with, or act as any inducement to enter into any contract therefore.

No reliance may be placed by an individual, interested party or its advisers for any purpose whatsoever on the information contained in this Presentation or on its completeness, accuracy or fairness thereof, nor is any responsibility accepted by the Company for any errors, misstatements in, or omission from, this Presentation or any direct or consequential loss however arising from any use of, or reliance on, this Presentation or otherwise in connection with it by an individual or interested party.

This Presentation may not be reproduced or redistributed, in whole or in part, to any other person, or published, in whole or in part, for any purpose without the prior consent of the Company. The contents of this Presentation are confidential and are subject to updating, completion, revision, further verification and amendment without notice.

This Presentation being distributed on request only to, and is directed at, authorized persons or exempt persons within the meaning of FSMA or any order made thereunder or to those persons falling within the following articles of the Financial Services and Markets Act 2000 (Financial Promotion) Order 2005 (as amended) (the "Financial Promotion Order"): Investment Professionals (as defined in Article 19(5)) and High Net Worth Companies (as defined in Article 49(2)). Persons who do not fall within any of these definitions should not rely on this Presentation nor take any action upon it but should return it immediately to the Company. This Presentation is exempt from the general restriction in section 21 of FMSA relating to the communication of invitations or inducements to engage in investment activity on the grounds that it is made only to certain categories of persons.

Neither this Presentation nor any copy of it should be distributed, directly or indirectly, by any means (including electronic transmission) to any persons with addresses in the United States of America (or any of its territories or possessions) (together the "US"), Canada, Japan, Australia, the Republic of South Africa, the United Kingdom or the Republic of Ireland, or to any corporation, partnership or other entity created or organised under the laws thereof, or in any other country outside the Republic of the Seychelles where such distribution may lead to a breach of any legal or regulatory requirement. The recipients should inform themselves about and observe any such requirements or relationship.

The Company's ordinary shares have not been, and are not expected to be, registered under the United States Securities Act 1933, as amended, (the "US Securities Act") or under the securities laws of any other jurisdiction, and are not being offered or sold, directly or indirectly, within or into the US, Canada, Japan, Australia, the Republic of South Africa, the United Kingdom or the Republic of Ireland or to, or for the account or benefit of, any US persons or any national, citizen or resident of the US, Canada, Japan, Australia, the Republic of South Africa, the United Kingdom or the Republic of Ireland, unless such offer or sale would qualify for an exemption from registration under the US Securities Act and/or any other applicable securities laws.

This Presentation or documents referred to in it contain forward-looking statements. These statements relate to the future prospects developments and business strategies of the Company and its subsidiaries (the "Group"). Forward-looking statements are identified by the use of, but not restricted to, such terms as "believe", "could", "envisage", "estimate", "potential", "intend", "may", "plan", "will" or the negative of those, variations or comparable expressions, including references to assumptions. The forward-looking statements contained in this Presentation are based on current expectations and are subject to risks and uncertainties that could cause actual results to differ materially from those expressed or implied by those statements. If one or more of these risks or uncertainties materialises, or if any underlying assumptions prove incorrect, the Group's actual results may vary materially from those expected, estimated or projected. Given these risks and uncertainties, potential investors should not place any reliance on forward-looking statements. These forward-looking statements speak only as at the date of this Presentation.

METERS AND GRADES. Widths are reported in drill core lengths and the true widths are estimated to be 80-90% and AuEq metal values are calculated using: AuEq metal values are calculated using: Au 1924.79 USD/oz, Ag 22.76 USD/oz, Cu 3.75 USD/lbs, Pb 2128.75 USD/ton and Zn 2468.50 USD/ton on December 23, 2023. There is potential for economic recovery of gold, silver, copper, lead, and zinc from these occurrences based on other mining and exploration projects in the same Golden Triangle Mining Camp where Goliath's project is located such as the Homestake Ridge Gold Project (Auryn Resources Technical Report, Updated Mineral Resource Estimate and Preliminary Economic Assessment on the Homestake Ridge Gold Project, prepared by Minefill Services Inc. Bothell, Washington, dated May 29, 2020). Here, AuEq values were calculated using 3-year running averages for metal price, and included provisions for metallurgical recoveries, treatment charges, refining costs, and transportation. Recoveries for Gold were 85.5%, Silver at 74.6%, Copper at 74.6% and Lead at 45.3%. It will be assumed that Zinc can be recovered with the Copper at the same recovery rate of 74.6%. The quoted reference of metallurgical recoveries is not from Goliath's Golddigger Project, Surebet Zone mineralization, and there is no guarantee that such recoveries will ever be achieved, unless detailed metallurgical work such as in a Feasibility Study can be eventually completed on the Golddigger Project. The potential quantity and grade are conceptual in nature, that there has been insufficient exploration to define a mineral resource and that it is uncertain if further exploration will result in the target being delineated as a mineral resource. Rein Turna P. Geo is the qualified person as defined by National Instrument 43-101, for Goliath Resource Limited projects, and supervised the preparation of, and has reviewed and approved, the technical information.



BOARD & TEAM

Roger Rosmus, MBA, Founder, CEO, Director

- >25 years of investment banking experience in the public and private sectors.

Graham C. Warren, CPA, CMA, CFO, Director

- Senior financial executive with >30 years experience in the technology, mining, and oil and gas sectors.

Wayne Isaacs, Director (Ind)

- >30 years of investment banking experience in the resource sector.

Rein Turna, P. Geo., Director (Ind)

- >40 years experience in the mining industry.

Dr. Quinton Hennigh, Technical Advisor

- World renowned exploration geologist with >30 years of experience with major miners Homestake, Newcrest and Newmont. CHM of Novo TSX.V: NVO

Dr. Venessa Bennett, B.Sc. (Hons), Ph.D. , Advanced Diploma in GIS/RS, Advisor

- >25 years experience in geosciences mining industry.

Bill Chornobay, Program Manager

- >30 years proven track record; discoveries resulting in ~1 billion dollars in value.



SHARE STRUCTURE



| SHARE STRUCTURE | |
|---|----------------------|
| SHARES ISSUED & OUTSTANDING | 120,800,989 |
| WARRANTS OUTSTANDING | 15,907,448 |
| OPTIONS & RSU OUTSTANDING | 14,962,890 |
| FULLY DILUTED | 151,671,327 |
| BOD, Management & Team | (P/D) ~ 19.0% |
| Crescat Capital LLC | (P/D) ~ 18.4% |
| Strategic/Institution | (P/D) ~ 9.9% |
| Mr. Rob McEwen | (P/D) ~ 5.0% |
| Mr. Eric Sprott | ~ 3.5% |
| Warrants in the money (avg. @ \$0.62) | \$9,850,000 |
| Fully Diluted – Options & Warrants (avg. @ \$0.84) | \$23,700,000 |

Aug 15/24 Close @ \$1.34 - 52 week high @ \$1.36 - 52 week low \$0.60 - 52 week volume 87,935,835 VWAP @ \$0.89

Research



Watchlist





Upsized Non-Brokered Placement

August 8, 2024

Goliath Receives Lead Order From Strategic Investor Crescat Capital For Expanded Drill Program At Surebet Discovery – Non Brokered Private Placement Up To \$3,000,000

August 13, 2024

Goliath Resources Receives \$2,000,000 Order From A New Strategic Singapore Based Global Commodity Group And The Previously Announced Non-Brokered Private Placement Has Been Increased From \$3,000,000 Up To \$6,500,000

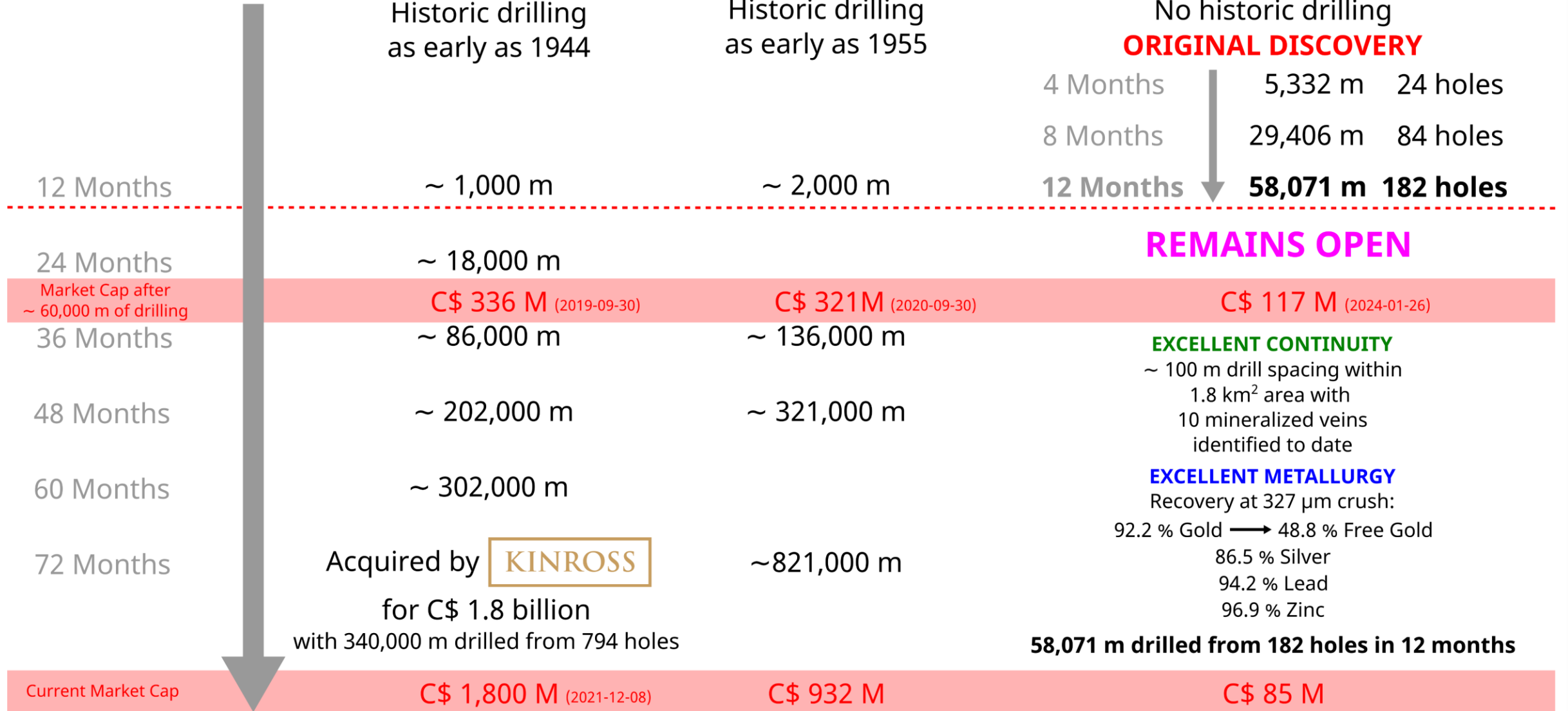
Actual drill time on project



Historic drilling as early as 1944

Historic drilling as early as 1955

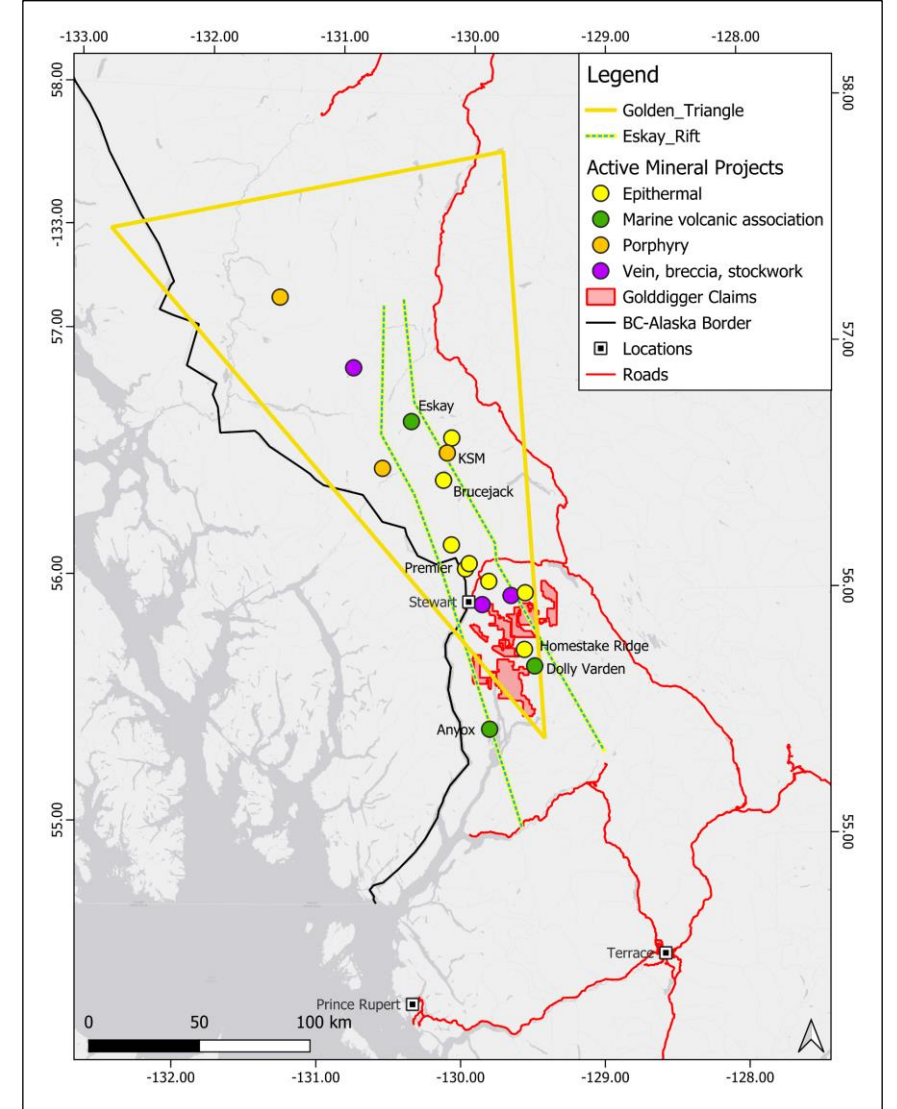
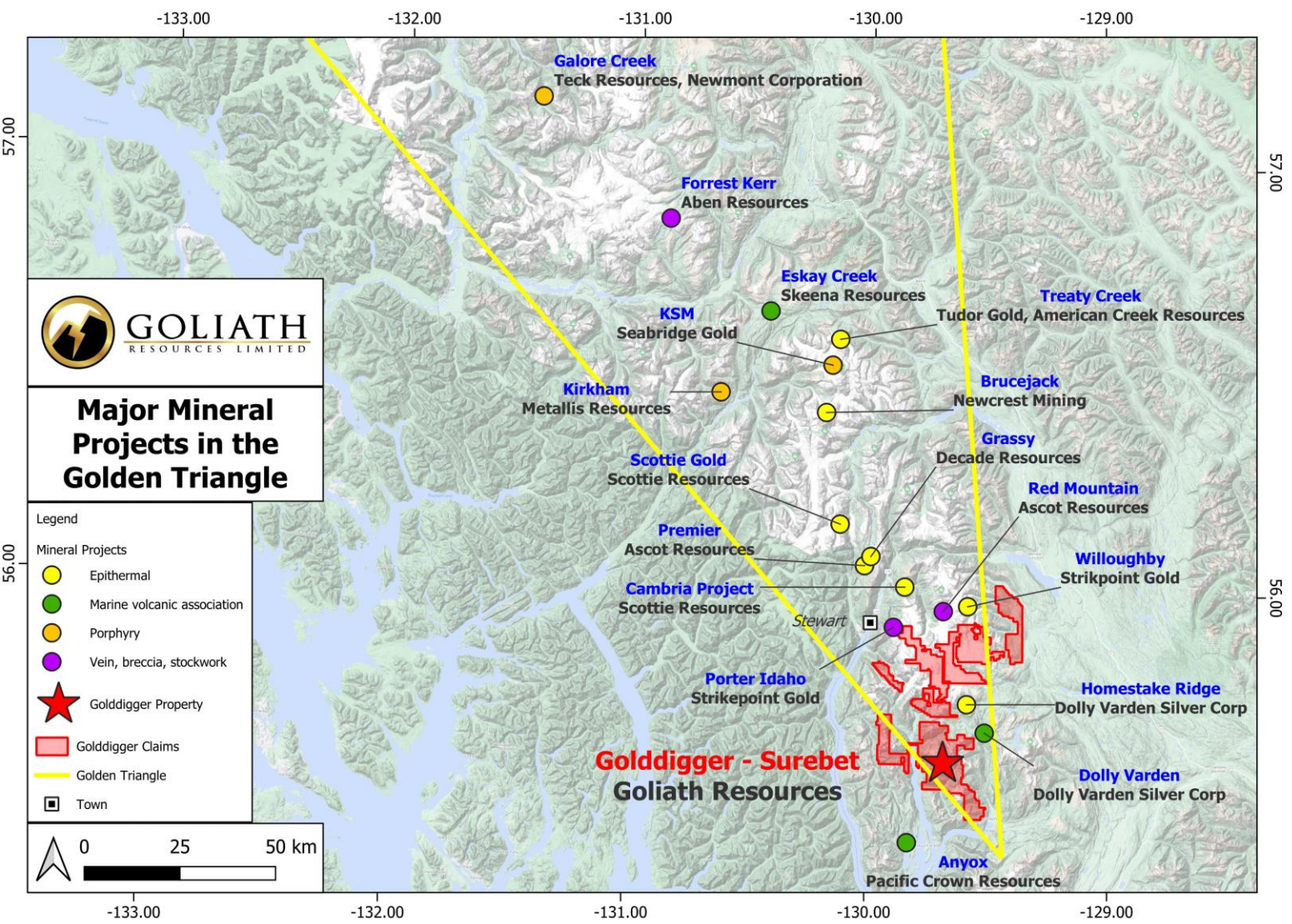
No historic drilling
ORIGINAL DISCOVERY

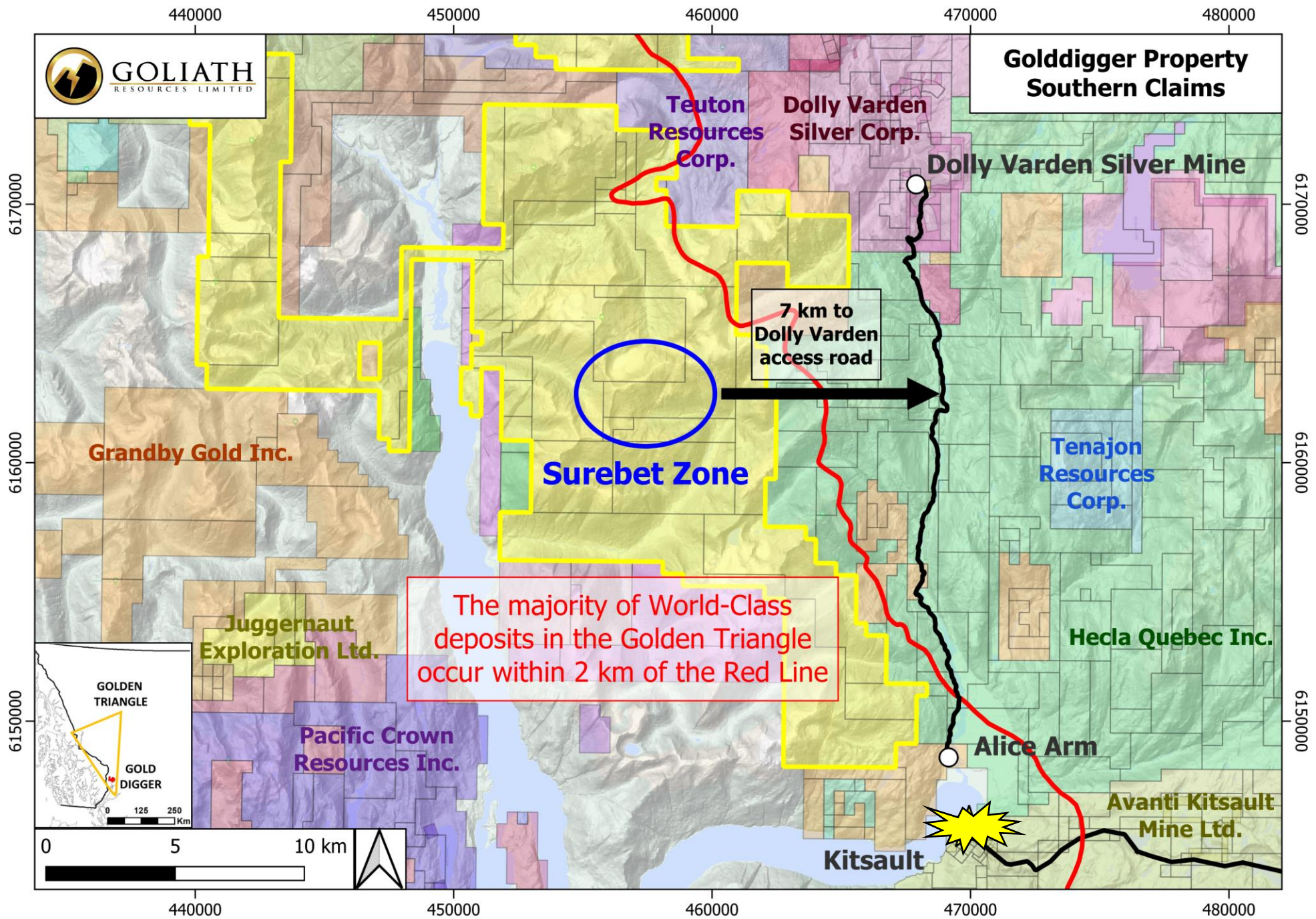




GOLDDIGGER PROPERTY – Golden Triangle

Option to earn 100%







GOLDDIGGER PROPERTY – Surebet Discovery

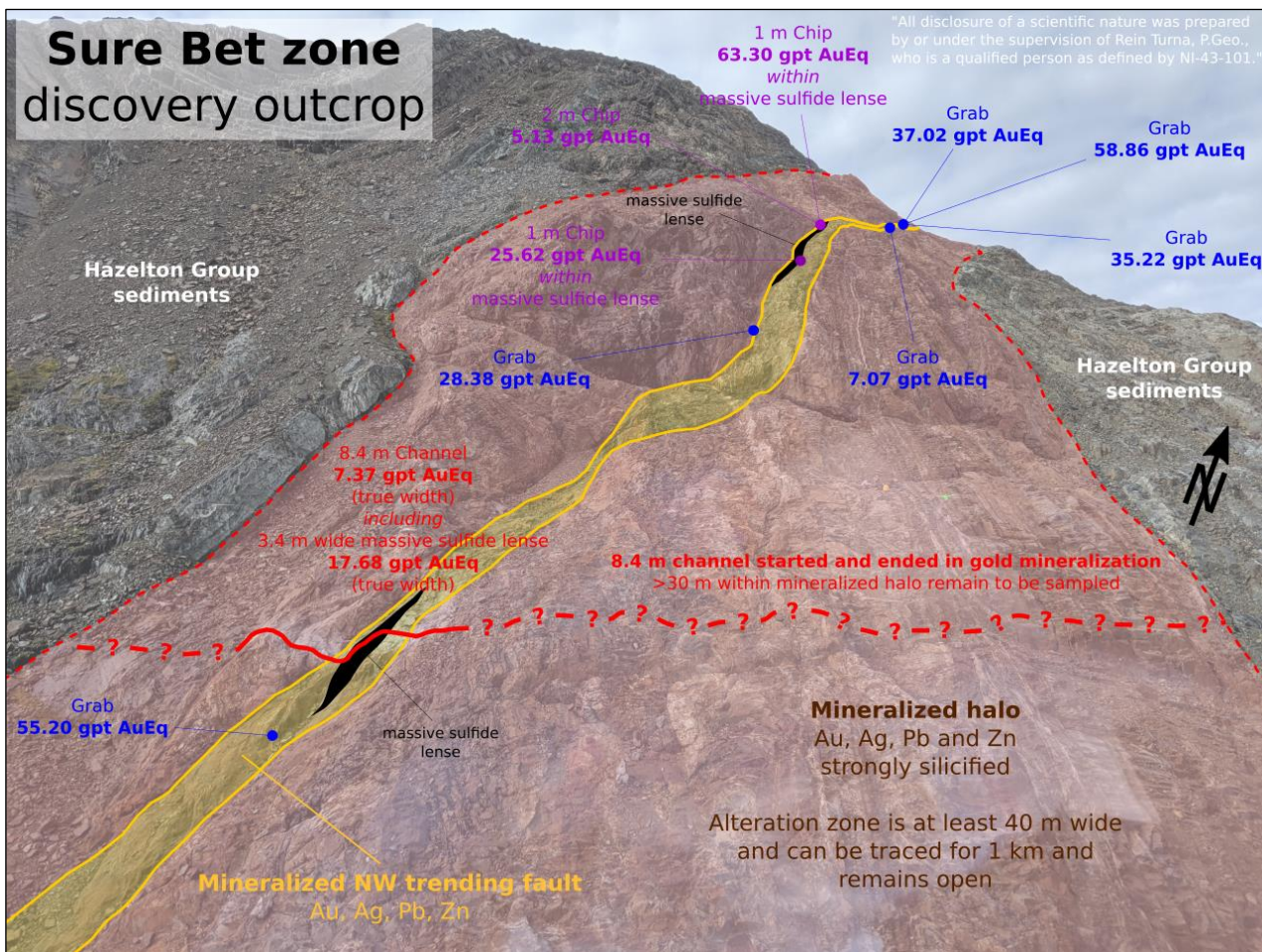


- Surebet Zone has 1 km of strike and 1.1 km down dip at surface with 700 m vertical relief with exceptional continuity and remains open.
- >65,000 meters diamond drilling in three seasons (2021 - 2023) confirming a mineralized area over 1.8 sqkm or >336 NFL fields that contain multiple extensive stacked bonanza-grade veins within 650 meters from surface
- Extensive Porphyry feeder source for the high-grade gold mineralizing fluids confirmed by Surebet Zone by Colorado School of Mines study.
- Exceptional Gold recoveries of 92.2% with 48.8% being free gold from gravity @ 327-micron crush; no cyanide required to recover the gold.
- 10 separate high-grade gold veins/shears that remain open have been identified and modeled from drilling to date.
- Excellent infrastructure with permitted mill site in Kitsault nearby and the property sits on tidewater.

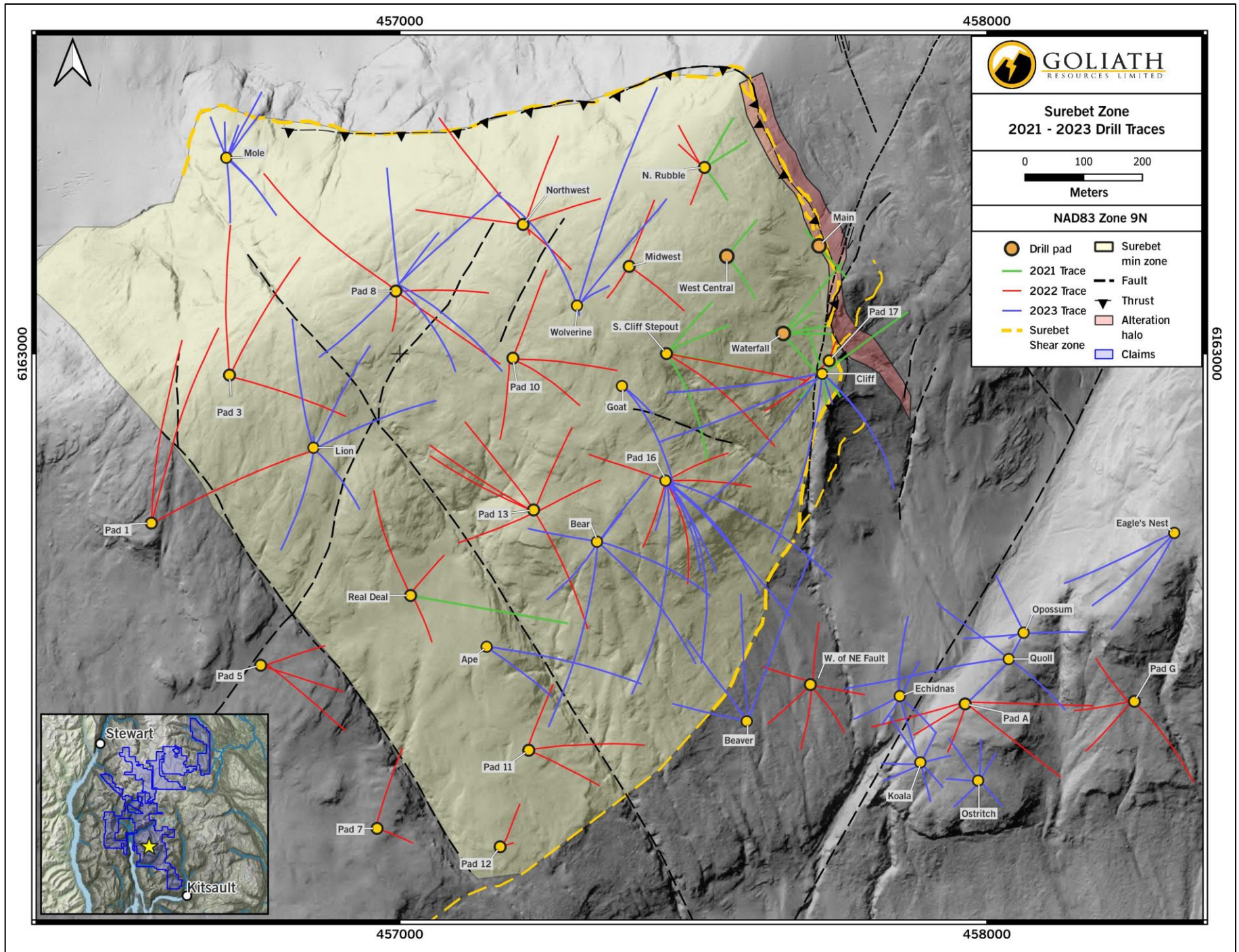


GOLDDIGGER PROPERTY – Golden Triangle

Surebet Zone - Geological Overview

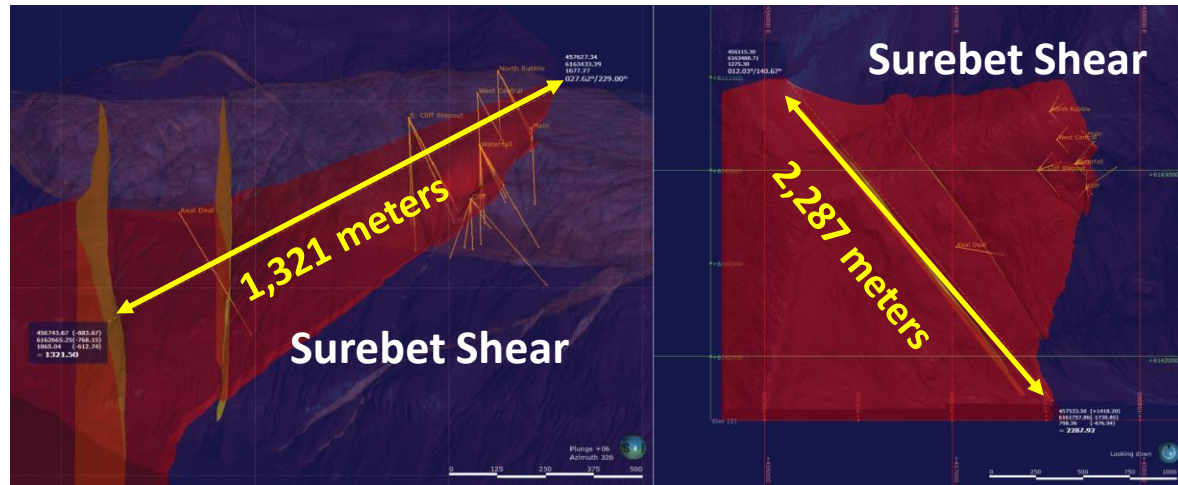


2021 – green drill traces
2022 – red drill traces
2023 – blue drill traces

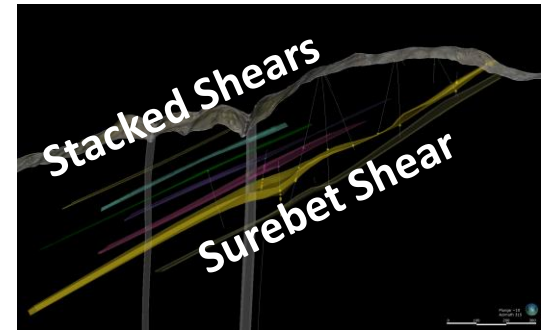
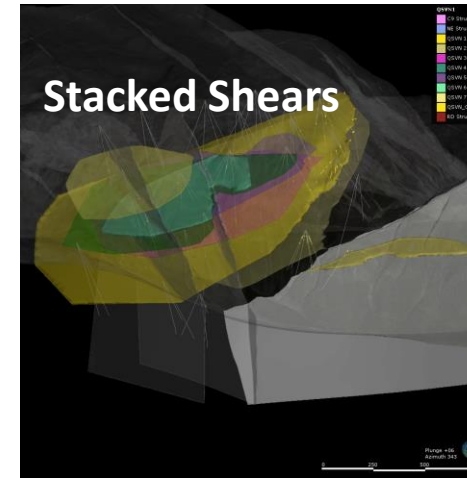


Surebet Discovery Model Evolution - 2021, 2022 & 2023

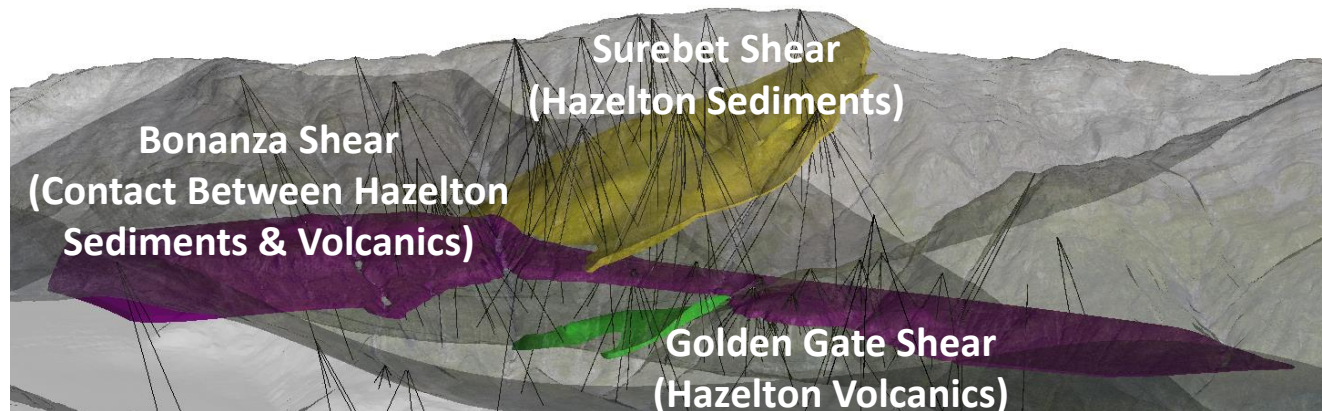
Post 2021 Drilling Results



Post 2022 Drilling Results



Post 2023 Drilling Results





MODELING & GEOCHEMICAL TEAM

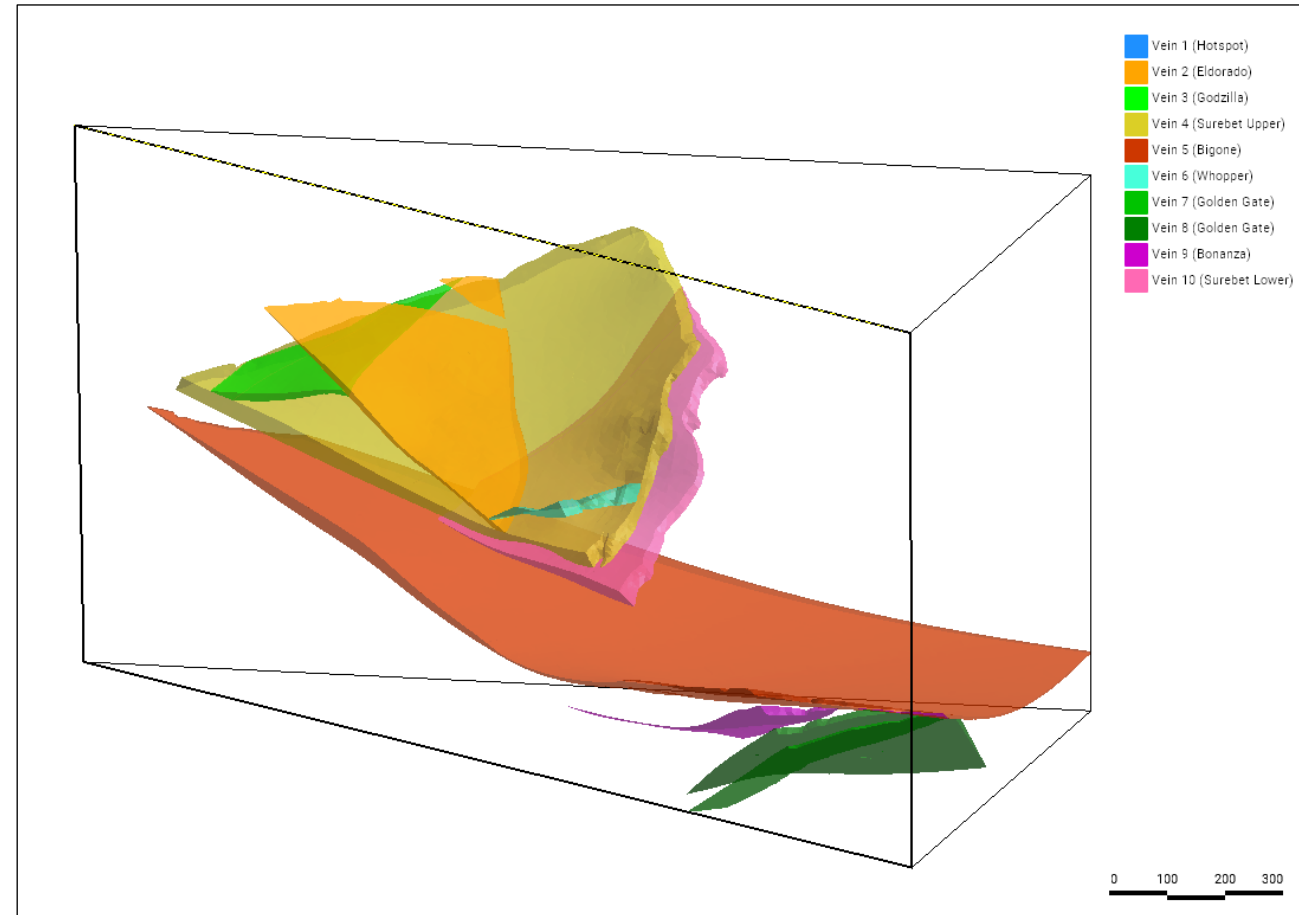
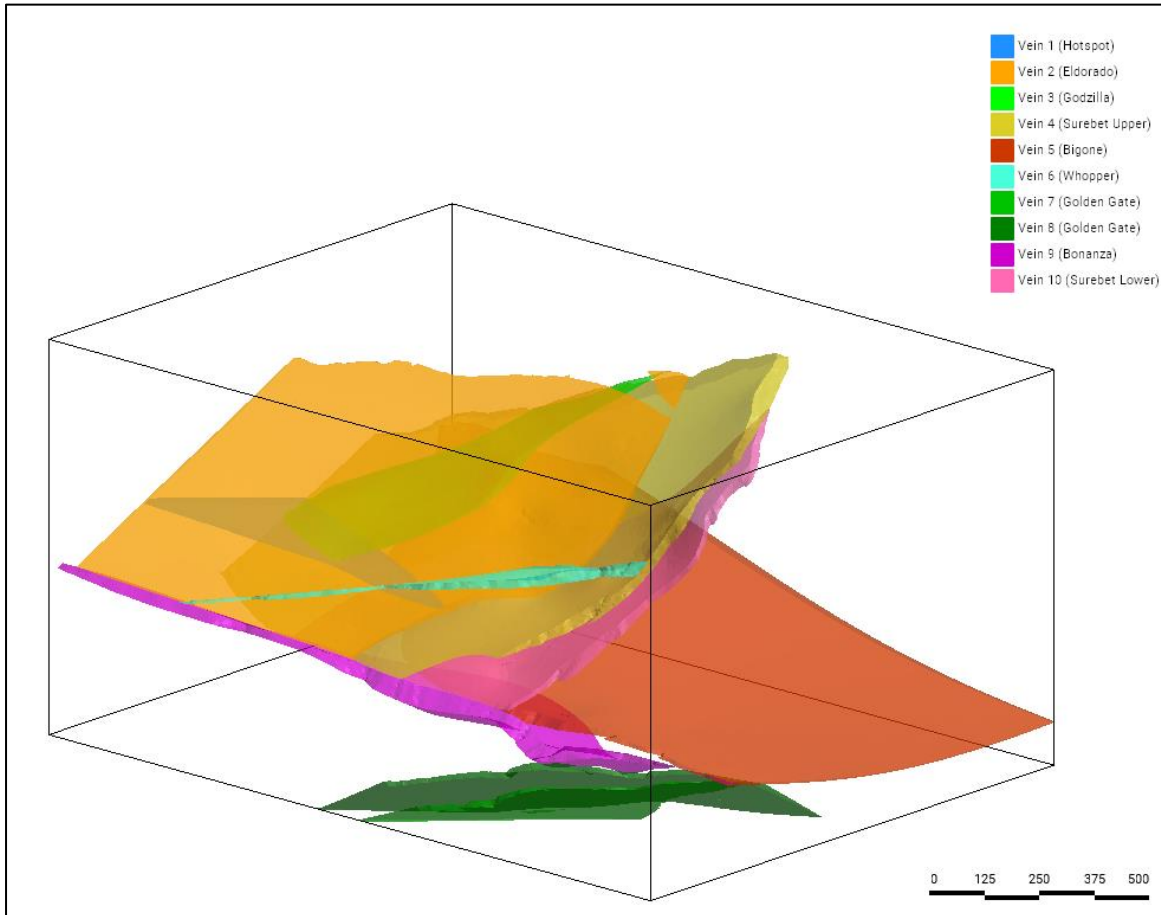
Off season focused on geochemical investigations (ongoing), updating of the geologic model (ongoing), metallurgical studies, the planning (ongoing) of a 2024 summer drill and exploration sampling programs.

Updating of the geologic model and the overall understanding of the mineralization has become a collaborative effort between Goliath's geologic team, several contractors and universities including:

- Archer, Cathro & Associates (1981) Limited – Leapfrog model, regional structural mapping and mineralization;
- SRK Consulting (Canada) Inc. – Preliminary structural interpretation of the Surebet Zone;
- Colorado School of Mines – Geochemical, petrological and geochronological studies;
- Motherlode Consulting – Conceptual Structural Vein and Lithological Modeling;
- Drone North – Detailed drone imagery;
- Oriented Targeting Solutions LLC (OTS) – structural geometry from core; and
- Carlos Gold – Detailed structural and lithologic mapping of the Surebet Zone.

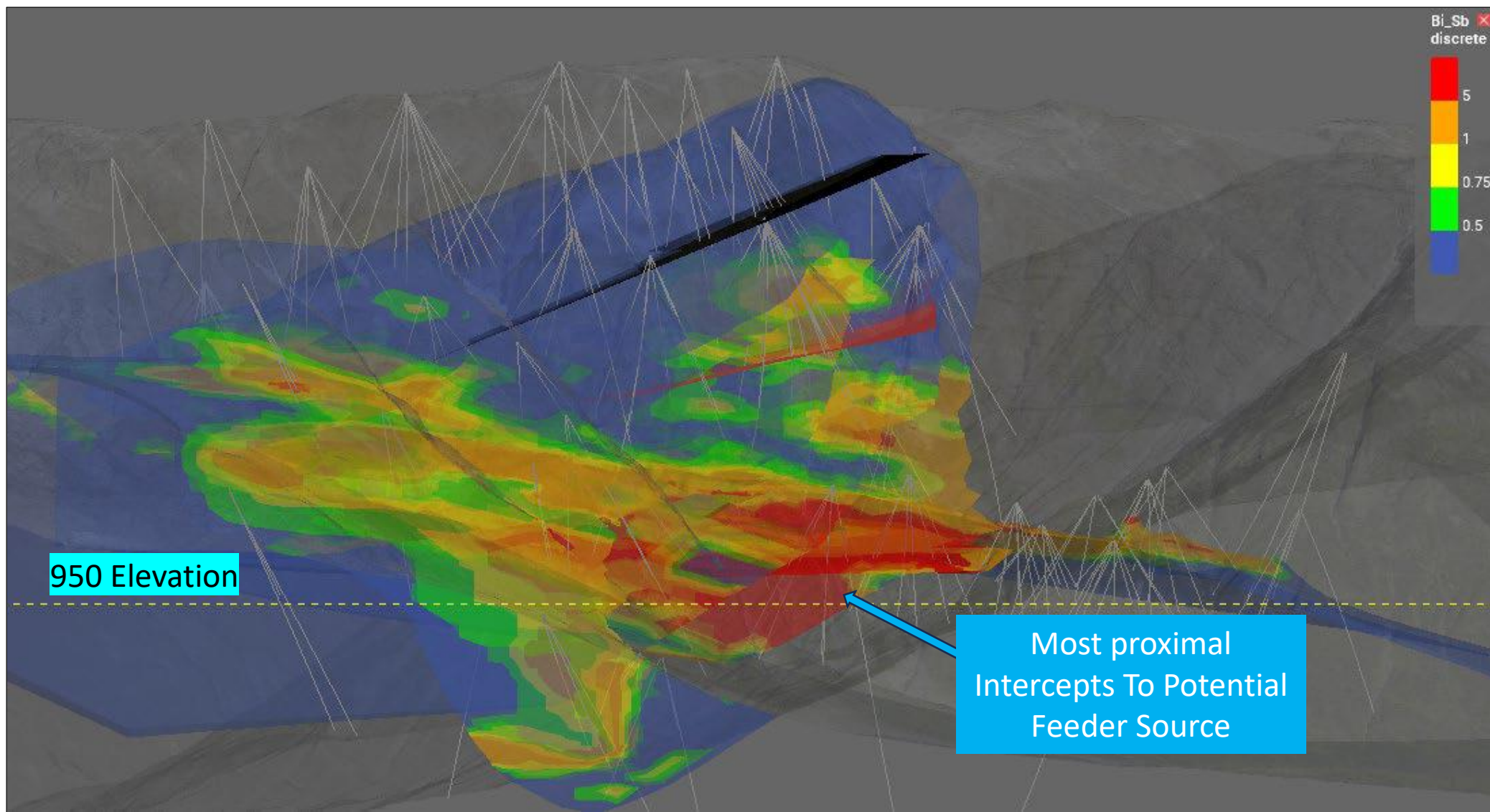
2024 Updated Conceptual Structural Vein Model

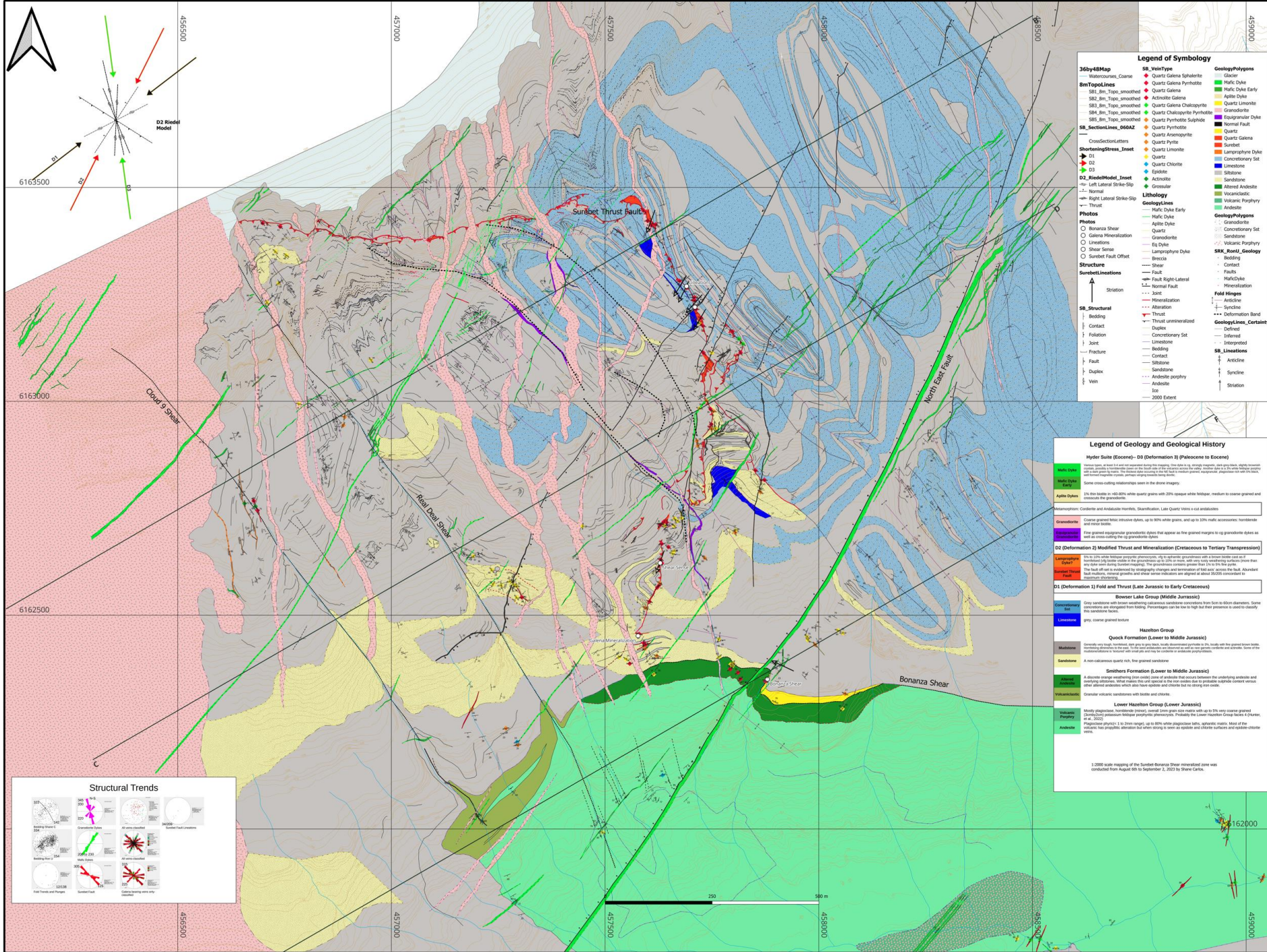
10 Veins Based on 2021 – 2023 Drill Assays (230 Intervals) And Structural Data



The potential quantity and grade ranges are conceptual in nature, and that there has been insufficient exploration to define a mineral resource and that it is uncertain if further exploration will result in the Surebet Discovery being delineated as a NI 43-101 compliant mineral resource and is subject to change. Goliath's conceptual Leap Frog structural vein/shear model takes into consideration and is based on: all structural data collected from surface and logged drill core (incl. oriented core), specific gravity (SG) of 2.93 x cubic meters from the area drilled, weighted average of all mineralized grades/widths from all 222 diamond drill holes totaling over 230 pierce points assayed inclusive of the 2023 program. Rein Turna P. Geo is the qualified person as defined by National Instrument 43-101, for Goliath Resource Limited projects, and supervised the preparation of, and has reviewed and approved, the technical information.

Zonation / Vectoring Assessment: Bi/Sb Interpolation





Legend of Symbology

| | | |
|-------------------------------|--------------------------------|-------------------------------|
| 360y48Map | SB_VeinType | GeologyPolygons |
| Substratum_Coarse | Quartz Galena Sphalerite | Galena |
| 8mTopoLines | Quartz Galena Pyrrhotite | Mafic Dyke |
| SB1_8m_Topo_smoothed | Quartz Galena | Mafic Dyke Early |
| SB2_8m_Topo_smoothed | Actinolite Galena | Aplitic Dyke |
| SB3_8m_Topo_smoothed | Quartz Galena Chalkopyrite | Quartz Limonite |
| SB4_8m_Topo_smoothed | Quartz Chalkopyrite Pyrrhotite | Granoblastic |
| SB5_8m_Topo_smoothed | Quartz Pyrrhotite Sphalerite | Equigranular Dyke |
| SB_SectionLines_660AZ | Quartz Pyrrhotite | Normal Fault |
| CrossSectionLetters | Quartz Ankerophyte | Quartz |
| ShorteningStress_Inset | Quartz Pyrrh | Quartz Galena |
| D1 | Quartz Limonite | Sunbet |
| D2 | Quartz Chlorite | Lamprophyne Dyke |
| D3 | Epoxide | Concretionary Set |
| D2_RiederModel_Inset | Actinolite | Limestone |
| Left Lateral Strike-Slip | Amphibole | Sandstone |
| Normal | Andesite | Altered Andesite |
| Right Lateral Strike-Slip | Andesite | Volcaniclastic |
| Thrust | Andesite | Volcanic Porphyry |
| Photos | Mafic Dyke Early | Andesite |
| Bonanza Shear | Aplitic Dyke | GeologyPolygons |
| Galena Mineralization | Quartz | Granoblastic |
| Lineations | Granoblastic | Concretionary Set |
| Shear Sense | Eq Dyke | Sandstone |
| Sunbet Fault Offset | Lamprophyne Dyke | Volcanic Porphyry |
| Structure | Basalt | Andesite |
| Sunbet Lineations | Basalt | SRK_KoM_Geology |
| Bedding | Basalt | Bedding |
| Contact | Basalt | Contact |
| Foliation | Basalt | Fault |
| Joint | Basalt | MaficDyke |
| Fracture | Basalt | Mineralization |
| Fault | Basalt | Syncline |
| Duplex | Basalt | Deformation Band |
| Vein | Basalt | GeologyLines_Certainty |
| | Basalt | Defined |
| | Basalt | Inferred |
| | Basalt | Interpreted |
| | Basalt | SB_Lineations |
| | Basalt | Articline |
| | Basalt | Syncline |
| | Basalt | Striation |

Legend of Geology and Geological History

Hydrar Suite (Eocene)- D3 (Deformation 3) (Paleocene to Eocene)

Hydrar Suite (Eocene)- D3 (Deformation 3) (Paleocene to Eocene) includes massive quartz veins, quartz veins, and quartz veins with varying degrees of alteration. Some cross-cutting relationships seen in the above imagery.

Albite Dykes

1% thin veins in v40-80% white quartz with 20% opaque white feldspar; medium to coarse grained and massive to granoblastic.

Granoblastic

Coarse grained felsic intrusions (dikes, up to 80% white quartz, and up to 20% mafic accessories; hornblende and relict biotite).

Equigranular

Fine grained equigranular granoblastic dikes that appear as the graned margins to eq granoblastic dikes as well as cross-cutting the eq granoblastic dikes.

D2 (Deformation 2) Modified Thrust and Mineralization (Cretaceous to Tertiary Transpression)

1% to 20% white to yellow porphyroclasts, 1% to 10% white granoblastic with a lower feldspar content. Some porphyroclasts are in the granoblastic. The porphyroclasts are greater than 10% the size of the matrix and are surrounded by secondary changes and transpression of host rock. Abundant fault slip and associated secondary changes and transpression of host rock. Some of the fault slip is associated with small scale volcanics are aligned at about 30/300 clockwise to maximum shortening.

D1 (Deformation 1) Fold and Thrust (Late Jurassic to Early Cretaceous)

Bower Lake Group (Middle Jurassic)

Gray sandstone with lower weathering calcareous sandstone, conglomerates from 5m to 10m diameters. Some thin shales are included from bedding. Porphyroclasts can be low to high but their presence is used to classify this sandstone facies.

Quick Formation (Lower to Middle Jurassic)

Generally very high, horizontal, fine to very fine grained, highly micaceous sandstone. The Quick Formation is a non-calcareous quartz rich, fine grained sandstone.

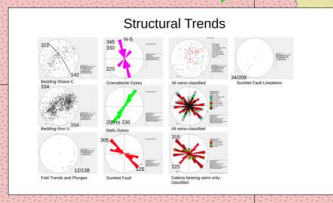
Smithers Formation (Lower to Middle Jurassic)

A diverse range weathering (see color) zone of calcareous that occurs between the underlying andesite and overlying calcareous. When this zone is well developed the zone is generally capped by a thin, reddish-brown, oxidized, other altered andesites which also have epidote and chlorite but no strong iron oxide.

Lower Hazelton Group (Lower Jurassic)

Mostly oligoclase, hornblende, pyroxene, and quartz. The Lower Hazelton Group is a diverse range of volcanic rocks. The volcanic rocks are generally altered andesites and andesites. The volcanic rocks are generally altered andesites and andesites. The volcanic rocks are generally altered andesites and andesites.

1:2000 scale mapping of the Sunbet-Bonanza Shear mineralized zone was conducted from August 08 to September 2, 2023 by Shane Carlos.





GOLDDIGGER PROPERTY – Surebet Discovery

4 Separate Main Veins - Most Significant Intercepts Over 1.8 sqkm Of Mineralization

| Zone | Drill Hole | High Grade Interval | Grams * Meters AuEq | Visible Gold |
|-----------------------|------------------|----------------------------------|------------------------|------------------------------|
| Surebet Upper | GD-23-157 | 21.08 g/t AuEq over 23m | 485 | Multiple |
| Surebet Upper | GD-23-173 | 14.68 g/t AuEq over 26.89m | 395 | Multiple up to 0.7 mm |
| Surebet Upper | GD-22-58 | 24.78 g/t AuEq over 11m | 273 | Multiple flakes |
| Surebet Upper | GD-21-03 | 6.37 g/t AuEq over 35.72m | 228 | None reported |
| Surebet Upper | GD-22-48 | 12.61 g/t AuEq over 11m | 139 | None reported |
| Surebet Lower | GD-23-180 | 65 g/t AuEq over 7.9m | 513 | Multiple up to 11 mm |
| Surebet Lower | GD-22-100 | 13.53 g/t AuEq over 11m | 149 | None reported |
| Bonanza | GD-23-197 | 11.54 g/t AuEq over 27m | 312 | Abundant up to 4 mm |
| Bonanza (2024) | GD-24-235 | 15.86 g/t AuEq over 11.9m | 189 | Abundant up to 1.3 mm |
| Golden Gate Lower | GD-22-49 | 21.30 g/t AuEq over 7.77m | 166 | Multiple flakes |



GOLDDIGGER PROPERTY – Golden Triangle

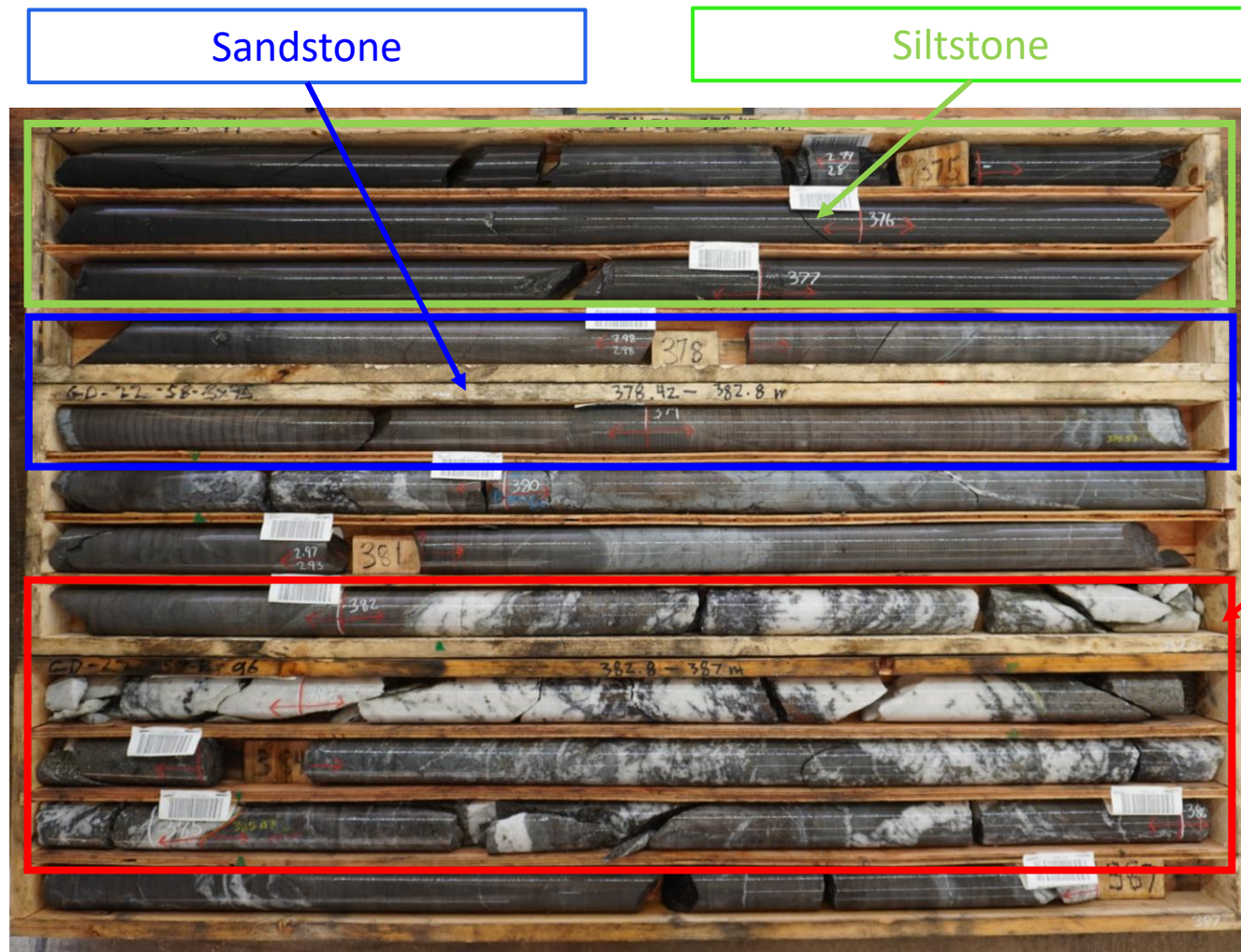



Surebet Zone Core

Sandstone

Siltstone


Mineralized Shear Zone

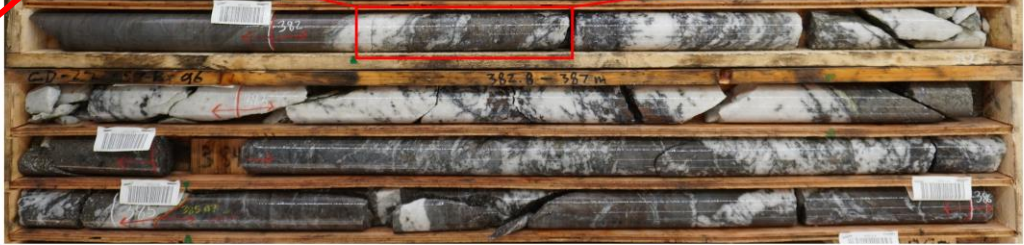




GOLIATH
RESOURCES LIMITED

South Cliff Stepout
Drill Hole: GD-22-58
Sample ID: ST112089
Depth: 382.00-383.00 m
144.555 gpt AuEq





| Hole | | From (m) | To (m) | Interval (m) | Au (gpt) | Ag (gpt) | Cu (%) | Pb (%) | Zn (%) | AuEq (gpt) |
|----------|-----------|----------|--------|--------------|----------|----------|--------|--------|--------|------------|
| GD-22-58 | Interval | 378 | 389 | 11.00 | 22.03 | 127.62 | 0.02 | 1.79 | 1.12 | 24.80 |
| | Including | 379 | 386 | 7.00 | 34.42 | 197.45 | 0.03 | 2.80 | 1.74 | 38.70 |
| | Including | 379 | 385.07 | 6.07 | 39.60 | 224.95 | 0.03 | 3.20 | 1.95 | 44.47 |
| | Including | 382 | 384 | 2.00 | 110.10 | 395.00 | 0.03 | 6.19 | 2.34 | 118.22 |

First Drill Hole And Assay Results Of 2024

GD-24-235



Golden Gate Pad
 Drill Hole: GD-24-235
 Depth: 441.0 - 452.9 m



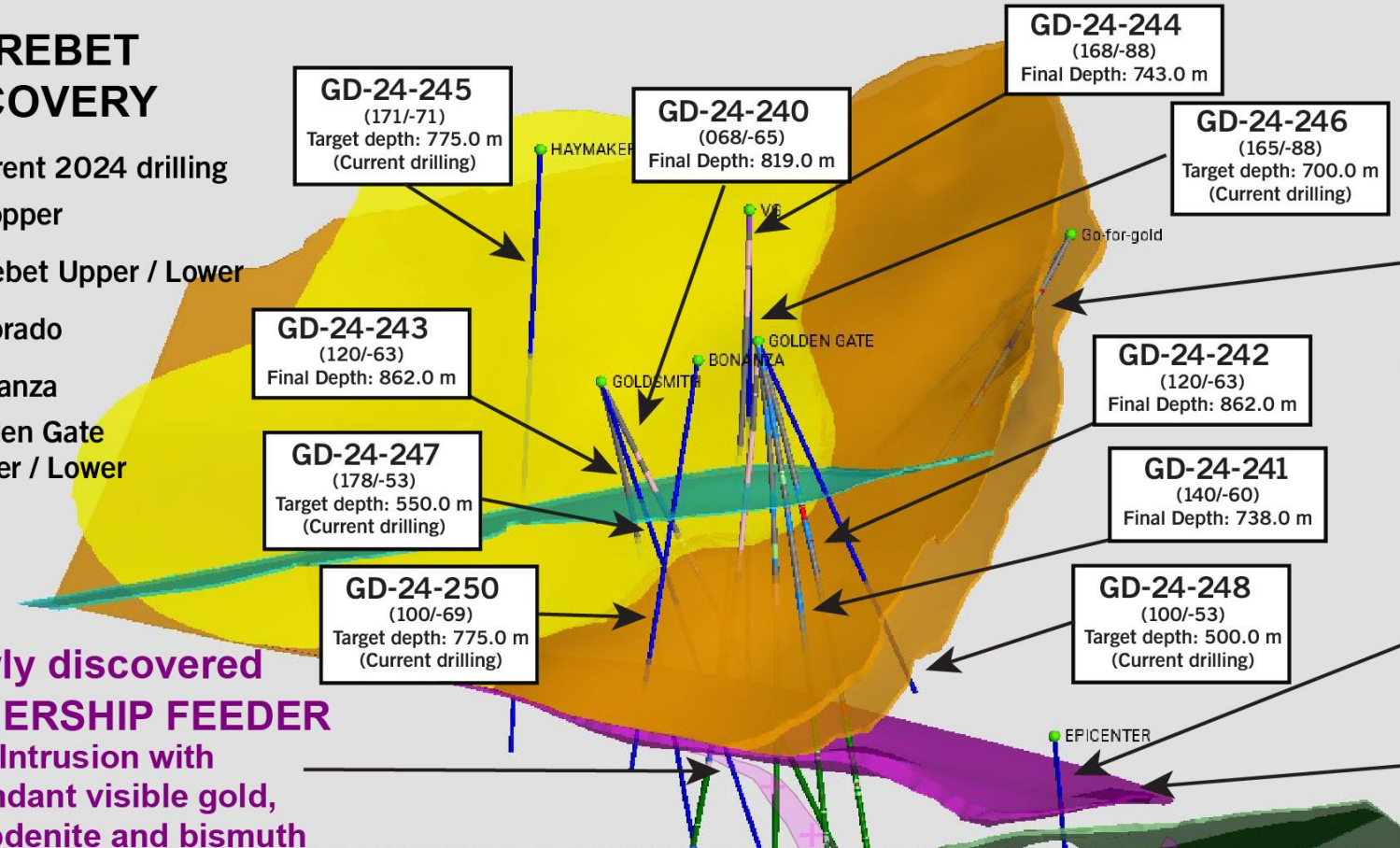
| Pad ID | Hole ID | | From (m) | To (m) | Interval (m) | Au (g/t) | Ag (g/t) | Cu (%) | Pb (%) | Zn (%) | AuEq (g/t) |
|-------------|-----------|----------|----------|--------|--------------|----------|----------|--------|--------|--------|------------|
| Golden Gate | GD-24-235 | Interval | 444.3 | 450.64 | 5.24 | 34.16 | 34.15 | 0.03 | 0.56 | 0.85 | 35.04 |
| | | Within | 441 | 452.9 | 11.9 | 15.40 | 17.11 | 0.02 | 0.28 | 0.47 | 15.86 |

- GD-24-235 collared from Golden Gate corresponding to the Bonanza Shear is a 189 grams x meters AuEq hole.
- Multiple Visible Gold grains up to 1.30 mm in length were identified within the Andesite host rock.
- The interval consists of 15.86 g/t AuEq (15.40 g/t Au and 17.11 g/t Ag) over 11.9 meters ~true width, including:
 - 35.04 g/t AuEq (34.16 g/t Au and 34.15 g/t Ag) over 5.24 meters ~true width.
- Assays pending on an additional 24.4 meter intercept of a porphyritic intrusion with abundant Visible Gold, Molybdenite up to 2mm and Bismuth (529 – 554m).
- Assays are also pending on a 10 meter intercept hosted in Andesite with abundant Visible Gold and quartz sulphide veins (between 550 – 650m).

SUREBET DISCOVERY

- █ Current 2024 drilling
- █ Whopper
- █ Surebet Upper / Lower
- █ Eldorado
- █ Bonanza
- █ Golden Gate Upper / Lower

10 Holes Completed
6 Holes current drilling
7250.0 m drilled to date



GD-24-236
(200/-45)
Final Depth: 351.0 m

6.79 g/t AuEq over 3.04 m
within 6.0 m of 4.14 g/t AuEq

Newly discovered MOTHERSHIP FEEDER
Intrusion with abundant visible gold, molybdenite and bismuth in veins

BONANZA
abundant visible gold and up to 2 % sphalerite, 1 % galena, 1 % chalcopyrite, 2 % pyrrhotite, and 3 % pyrite

GD-24-235
(180/-81.5)
Final Depth: 702.0 m

35.04 g/t AuEq over 5.24 m
within 11.9 m of 15.86 g/t AuEq

GD-24-237
(140/-70)
Final Depth: 848.0 m

Source ?

Golden Gate

4 Zones Totaling 105 Meters containing Abundant Visible Gold, Galena, Sphalerite, Molybdenite, Bismuth In Breccia, Stockwork and Porphyritic Intrusive dyke

Similarities to Mineralization Observed at Snowline Gold Corp's Rogue Project GD-24-237 313.0 to 321.0 Meters - Quartz Veins Hosted Within a Quartz Diorite Dike



- Sheeted quartz veining hosted within a Quartz Diorite dike which crosscuts the Surebet Zone. Displayed is this dike intercepted 22 meters up hole of the Surebet Lower Zone. ***Veins contain visible gold (VG), molybdenite, native Bismuth and/or Bismuth Tellurides (Bi).***
- Mineralization present at Surebet may share some traits of **RIRG (Reduced Intrusion Related Gold)** mineralization such as that observed at Snowline Gold Corp's Rogue deposit. Similarities include:
 - Sheeted or structurally controlled quartz carbonate veins hosted within both intermediate intrusive rocks and its host volcanic and sedimentary strata.
 - Mineralization consisting of native Au-Ag alloy (electrum), native Bismuth, and Pb-Zn-Cu-Bi sulphides.
- Mineralization shares some traits and is concentrated along structural features such as shear zones, in contrast to the more distributed nature of mineralization reported at the Valley deposit.



Pad 16
 Drill Hole: GD-23-197
 439 m - 466 m
 11.60 gpt AuEq over 27 m,
 incl. 14.83 gpt AuEq over 21 m,
 incl. 34.03 gpt AuEq over 9.03 m.

GD-23-197 - 2023 Drill Results

>1 oz/t AuEq OVER 9.03 m ABUNDANT VISIBLE GOLD IN GOLDEN GATE ZONE



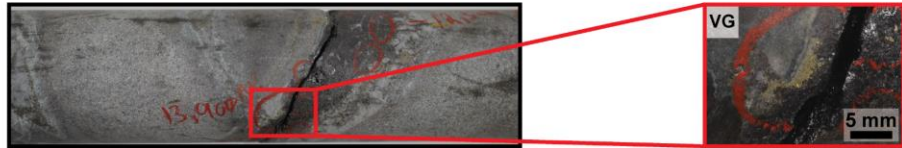
- GD-23-197 drilled in 2023, collared from Pad 16 and corresponds to the Bonanza Shear.
- GD-23-197 assayed:
 - 27 meters of 11.60 g/t AuEq (11.07 g/t Au and 23 g/t Ag), including;
 - 34.03 g/t AuEq or 1.09 oz/t AuEq over 9 meters (~true width) (32.55 g/t Au and 65.71 g/t Ag).

| Pad ID | Hole ID | | From (m) | To (m) | Interval (m) | Au (g/t) | Ag (g/t) | Cu (%) | Pb (%) | Zn (%) | AuEq (g/t) |
|--------|-----------|-----------|----------|--------|--------------|----------|----------|--------|--------|--------|------------|
| Pad 16 | GD-23-197 | Interval | 439.00 | 466.00 | 27.00 | 11.07 | 23.00 | 0.03 | 0.35 | 0.23 | 11.59 |
| | | Including | 442.00 | 463.00 | 21.00 | 14.17 | 29.13 | 0.04 | 0.45 | 0.28 | 14.83 |
| | | Including | 449.37 | 458.40 | 9.03 | 32.55 | 65.71 | 0.09 | 1.02 | 0.59 | 34.03 |



Pad 16
 Drill Hole: GD-23-180
 436.10 m - 444 m
 513.47 gm AuEq
 65.00 gpt AuEq over 7.90 m,
 incl. 86.99 gpt AuEq over 5.90 m,
 incl. 186.31 gpt AuEq over 2.75 m.

>2 oz/t AuEq OVER 7.90 m ABUNDANT VISIBLE GOLD IN BONANZA SHEAR



| Pad ID | Hole ID | | From (m) | To (m) | Interval (m) | Au (g/t) | Ag (g/t) | Cu (%) | Pb (%) | Zn (%) | AuEq (g/t) |
|--------|-----------|-----------|----------|--------|--------------|----------|----------|--------|--------|--------|------------|
| Pad 16 | GD-23-180 | Interval | 436.10 | 444.00 | 7.90 | 64.88 | 5.03 | 0.01 | 0.03 | 0.09 | 65.00 |
| | | Including | 436.10 | 442.00 | 5.90 | 86.84 | 6.52 | 0.01 | 0.04 | 0.12 | 86.99 |
| | | Including | 437.25 | 440.00 | 2.75 | 186.02 | 13.29 | 0.01 | 0.08 | 0.24 | 186.31 |

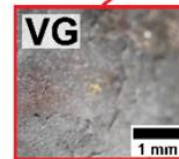
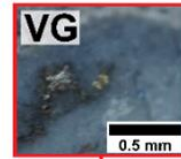
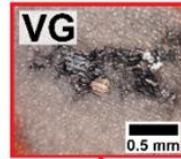
Select 2023 Drill Results

- GD-23-180 is a 513 gram x meter AuEq hole (16.5 troy ounces gram meter AuEq) collared from Pad 16 within Bonanza Shear, Golden Gate Feeder Zone.
- Highest-grade interval intersected so far on the property with a 513 gram*meter AuEq result.
- Multiple elongated Visible Gold grains up to 11 mm in length were identified.
- The interval consists of 65.00 g/t AuEq (64.88 g/t Au and 8.03 g/t Ag) over 7.90 meters, including:
 - 86.99 g/t AuEq (86.84 g/t Au and 6.52 g/t Ag) over 5.90 meters; and
 - 86.31 g/t AuEq (186.02 g/t Au and 13.29 g/t Ag) over 2.75 meters



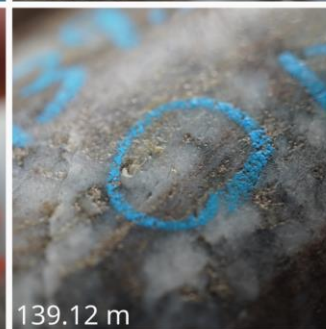
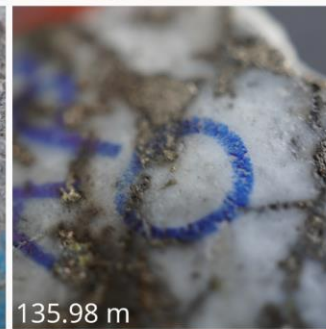
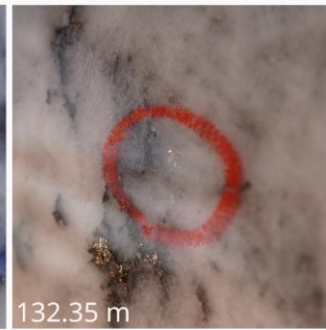
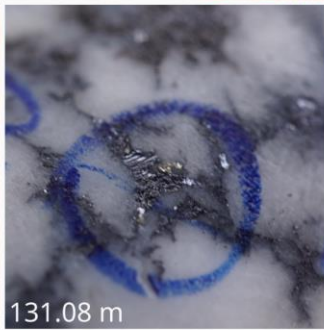
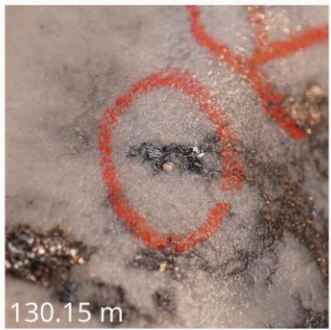
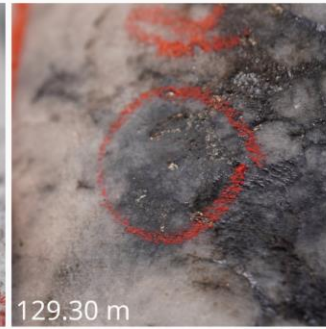
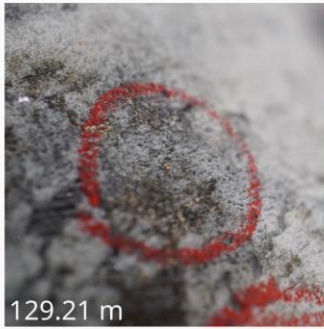
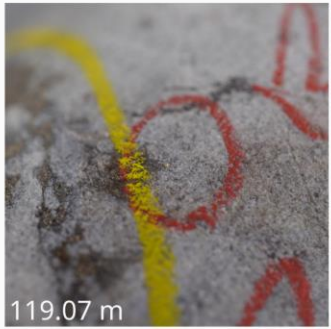
Cliff Pad
 Drill Hole: GD-23-157
 Depth: 125.18-138.18 m
 485 gm AuEq
 21.081 AuEq over 23 m,
 incl. 33.753 AuEq over 14 m,
 incl. 50.266 AuEq over 9 m

Select 2023 Drill Results

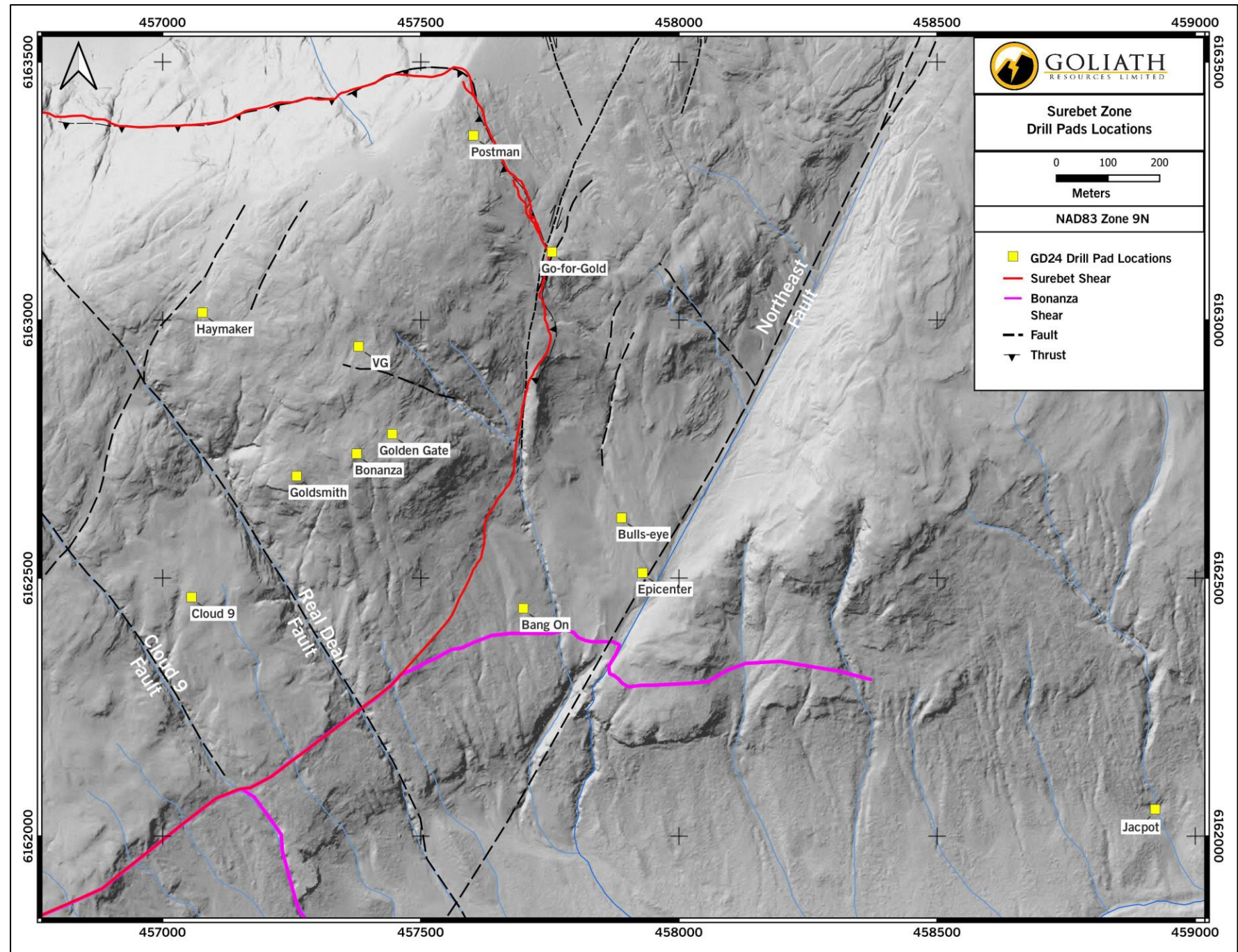


- GD-23-157 is a 485 gram x meter AuEq hole (15.59 troy ounces gram meter AuEq) collared from Cliff Pad within the Golden Gate Feeder Zone.
- Visible Gold intercepted and mineralization containing 23.00 meters* of 21.08 g/t AuEq (18.95 g/t Au and 95.31 g/t Ag);
 - including 14.00 meters* of 33.75 g/t AuEq (30.39 g/t Au and 150.42 g/t Ag) and including;
 - 9 meters* of 50.27 g/t AuEq or 1.62 oz/t AuEq (45.27 g/t Au and 225.42 g/t Ag).
- Interpreted to be the Surebet Zone from 117 to 139.20 meters and is only one of five intervals encountered in this hole.

| Pad ID | Hole ID | | From (m) | To (m) | Interval (m) | Au (g/t) | Ag (g/t) | Cu (%) | Pb (%) | Zn (%) | AuEq (g/t) |
|--------|-----------|-----------|----------|--------|--------------|----------|----------|--------|--------|--------|------------|
| Cliff | GD-23-157 | Interval | 118.00 | 141.00 | 23.00 | 18.95 | 95.31 | 0.01 | 1.29 | 1.37 | 21.08 |
| | | Including | 125.00 | 139.00 | 14.00 | 30.39 | 150.42 | 0.02 | 2.04 | 2.15 | 33.75 |
| | | Including | 129.00 | 138.00 | 9.00 | 45.27 | 225.42 | 0.02 | 3.04 | 3.15 | 50.27 |

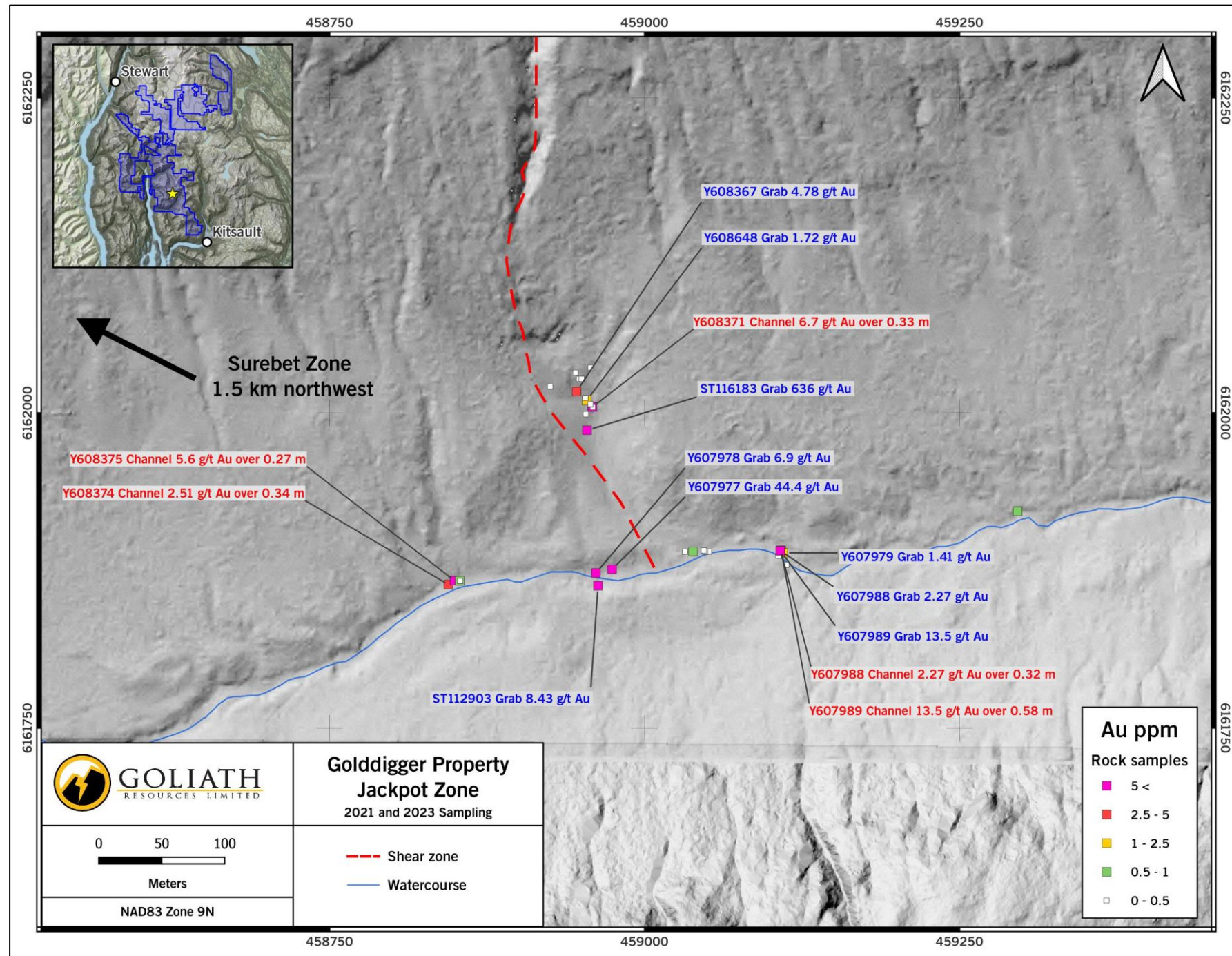


Surebet Discovery 2024 Drill Pad Locations



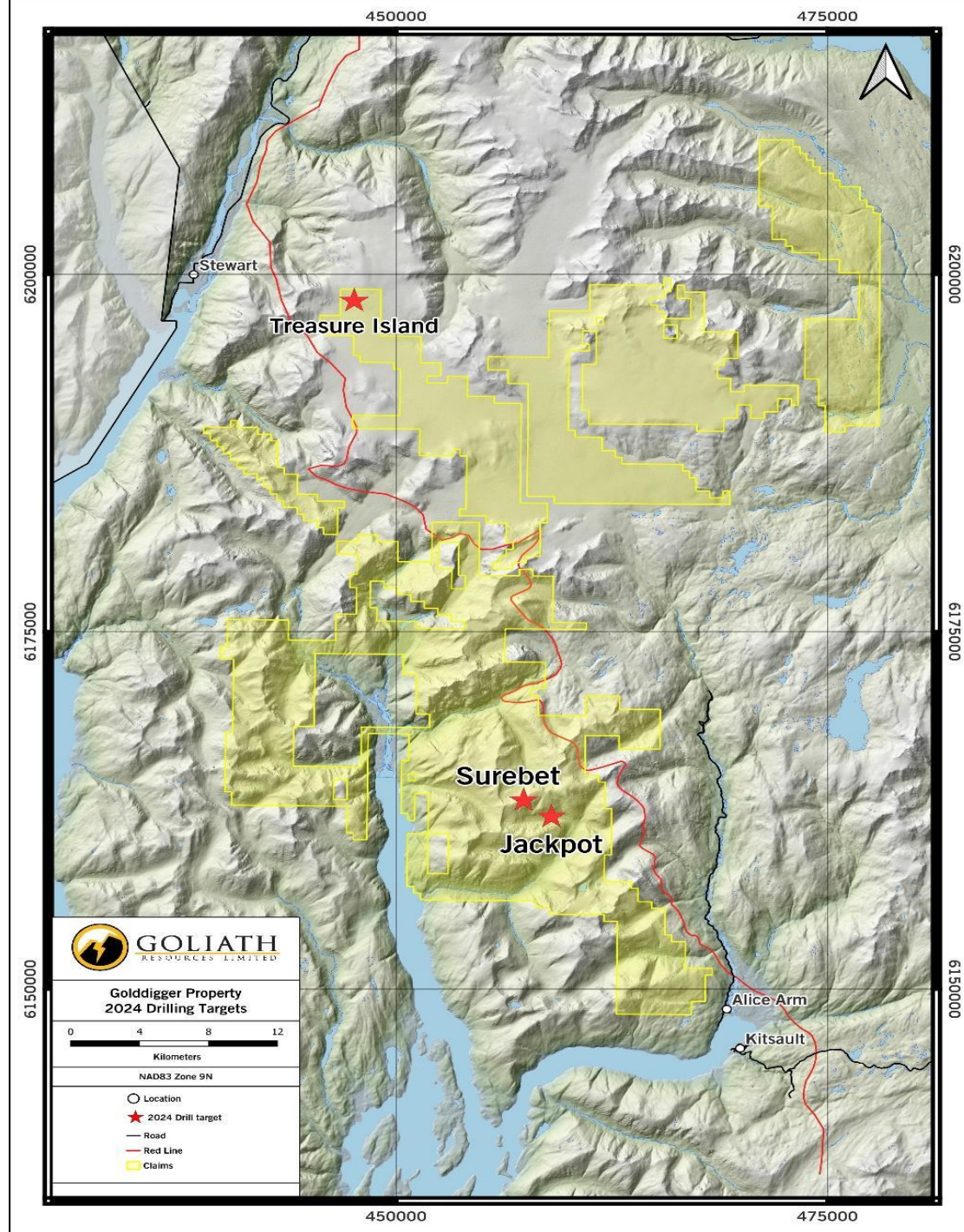
Jackpot Zone

- Insitu grab sample assayed 21.5 oz/t AuEq or 667.40 gpt AuEq (636.00 gpt Au, 1,690.00 gpt Ag, 7.96 % Cu, 2.22 % Pb); comes from a 30 cm wide quartz vein.
- Shear comprised of strongly silicified Porphyritic Andesite within the Hazelton Volcanics and 1 km east of Pad A at Surebet Zone.
- The stockwork of veins are near vertical and strike north-south hosted within a broader shear zone that can be traced for more than 500 meters with 400 meters of vertical relief
- 2024 proposed drill plan, looking to expand Surebet discovery and possible Porphyry feeder source.



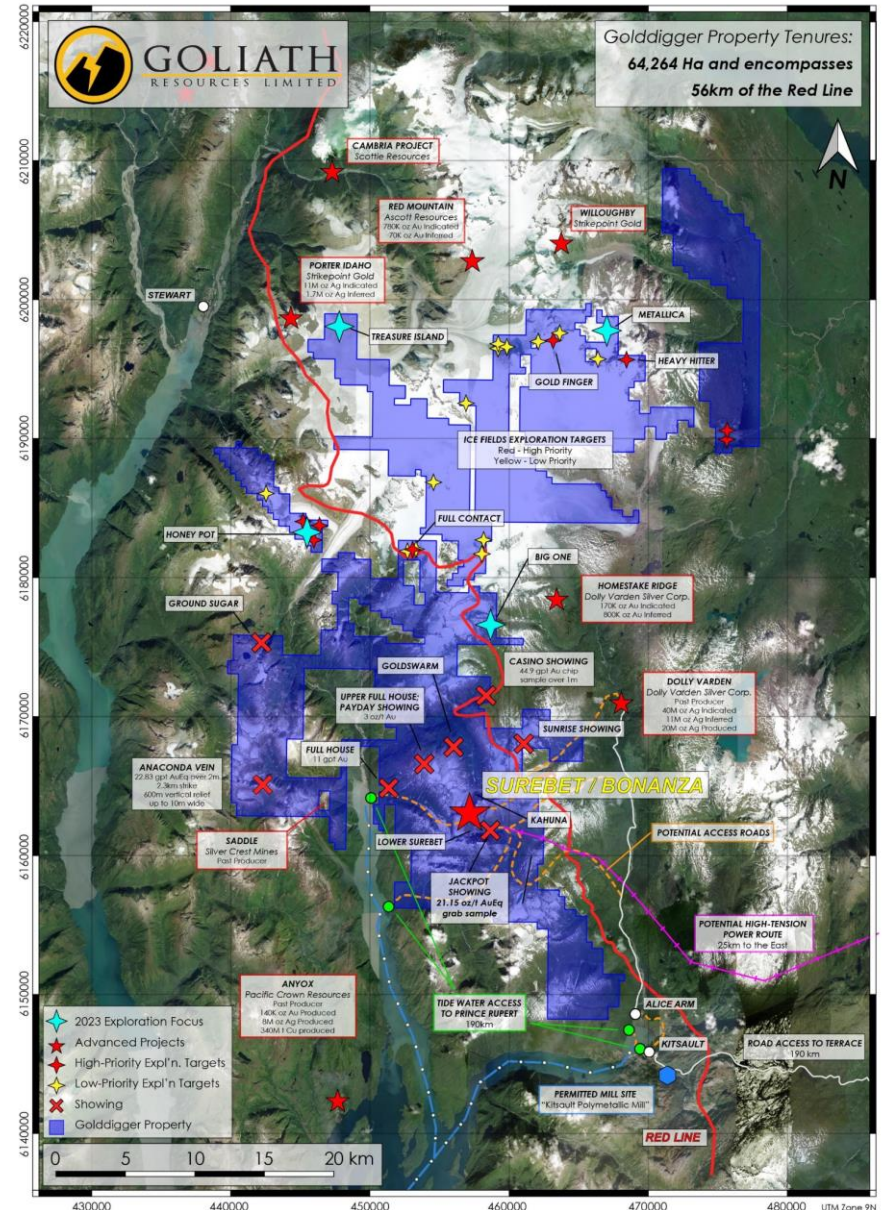
GOLDDIGGER PROPERTY

2024 Drilling Location Map

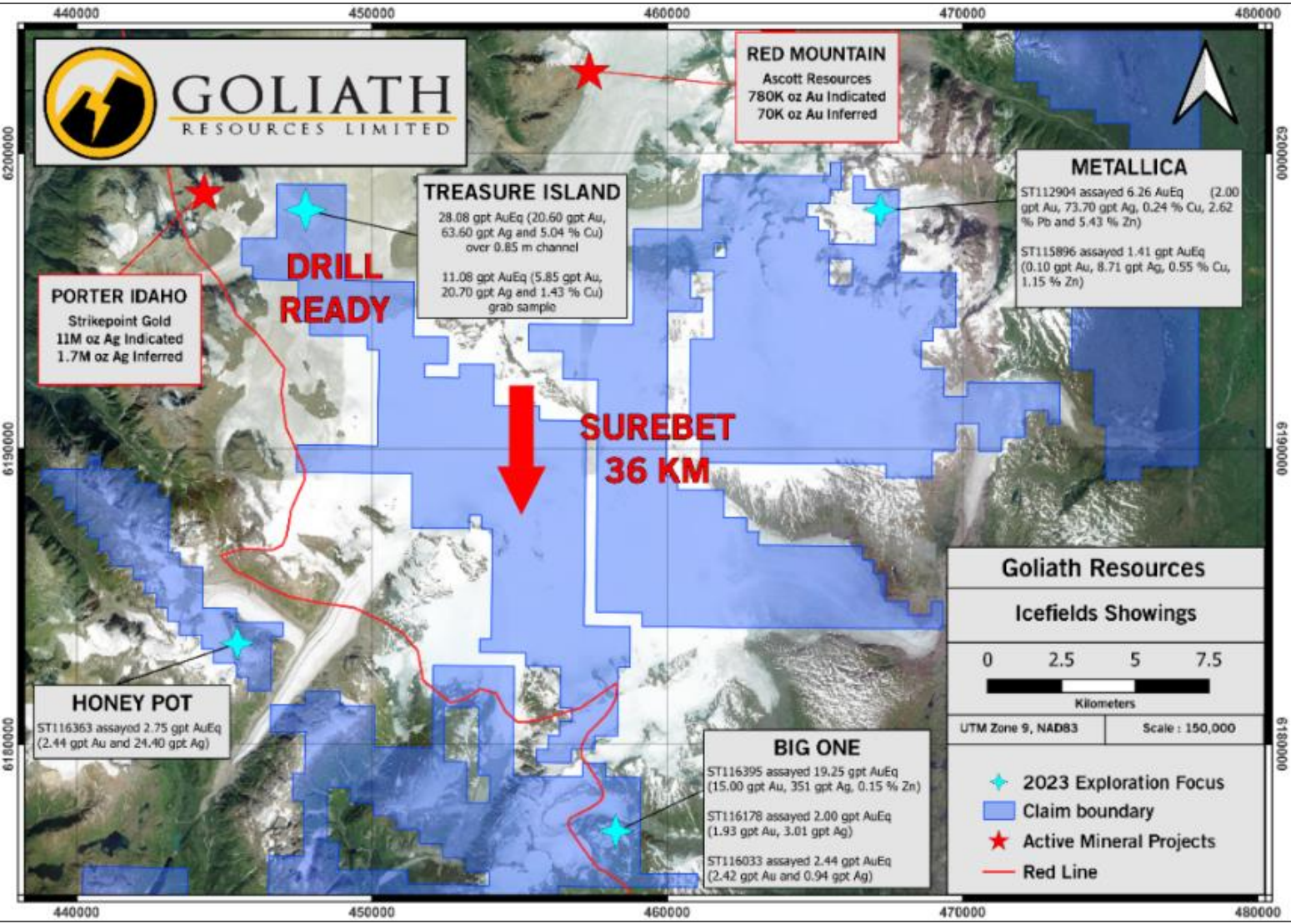


Expanded Claim Blocks Control 56 km Of The Red Line

- Based on positive results, the land package was significantly increased from 23,859 hectares to 66,023 hectares covering key terrain of the **Red Line** providing for additional discovery potential.
- The **Red Line** demarks the contact between rocks of the Stuhini Group and the Hazelton Group, believed to be a key marker within ~3 km of which the majority of the world-class multi-million-ounce deposits in the Golden Triangle are located.
- A large portion of the newly acquired land covers icefields to the north that have new outcrop showings at surface recently exposed due to the snowpack and glaciers melting.
- Management believes Surebet Zone/Bonanza Shear discovery is just the tip of the iceberg open for additional new high-grade drill discoveries.



GOLDDIGGER CAMBRIA ICEFIELDS



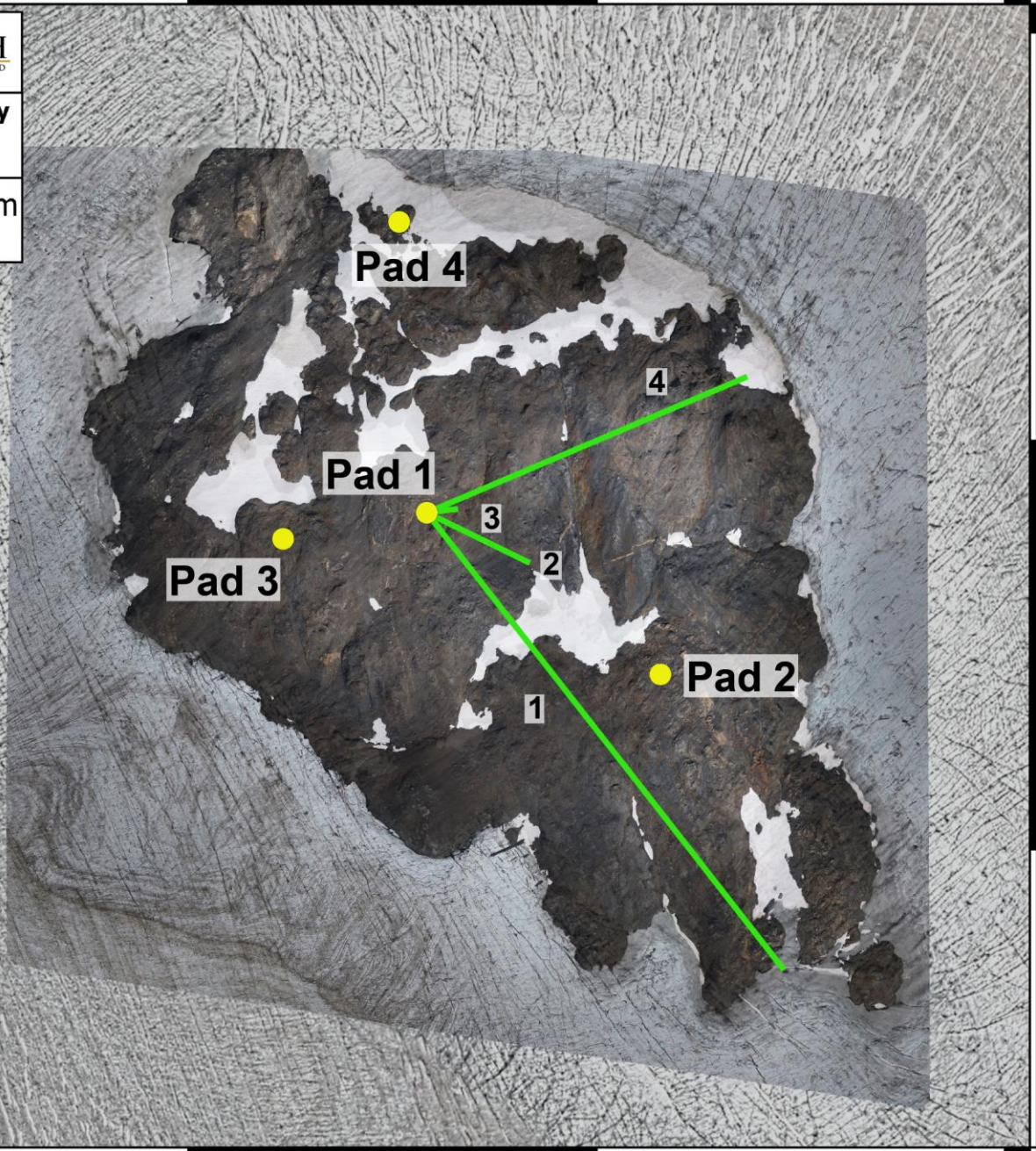
- Channel cutting and mapping completed in preparation for 2024 drilling.
- Treasure Island 36 km north of the Surebet discovery, 6 km east of, and on trend with, the Porter Idaho mine:
 - Maiden drill program planned in 2024
 - First four holes hit abundant sulphide mineralization (assay pending)
 - TI-24-01, Pad 1 intersected a 9.8 meter interval of quartz stockwork and breccia hosting massive chalcopyrite (up to 8%) and pyrite (up to 10%)
- Channel samples collected assayed up to 28.08 gpt AuEq and 14.45% Cu.
- 15 out of 16 channel cuts (94%) assayed >1.00 gpt.
- 13 out of 19 grab and chip samples (68%) assayed >1.00 gpt AuEq.

447250 447500 447750 448000



Golddigger Property
Treasure Island

0 50 100 m



447250 447500 447750 448000

Description Of Maiden Drill Holes At Treasure Island VMS Style Target

Assays Pending For All

- TI-24-01, Pad 1: A 9.8 meter interval of mineralization containing quartz stockwork and breccia hosting massive chalcopyrite (up to 8%) and pyrite (up to 10%); the zone remains open.
- ITI-24-04, Pad 1: The 5.46 meter interval of mineralization contains stockwork, quartz breccia hosting semi-massive to massive pyrite (2%) and trace chalcopyrite (<1%), together with subordinate malachite, the zone remains open.
- TI-24-02, Pad 1: The 2.74 meter interval of mineralization contains quartz-carbonate breccia, consisting of blebs of pyrite (2%) and trace chalcopyrite (<1%), the zone remains open.
- TI-24-03, Pad 1: The 1.77 meter interval of mineralization contains quartz-carbonate breccia with small blebs to semi massive pyrite (1%) and minor chalcopyrite (<1%), the zone remains open.

Newly Discovered Treasure Island Drill Hole Images:



TREASURE ISLAND SURFACE MINERALIZATION INTERCEPTED AT DEPTH

Channel cut NN1
28.08 gpt AuEq over 0.85 m
 (20.6 gpt Au, 63.6 gpt Ag, 5.04 % Cu)

Gold in massive to stockwork chalcopyrite and pyrite hosted in brecciated graphitic mudstones



Pad 1, Hole TI-24-01
 376.64 - 386.44 m (9.8 m)
8% chalcopyrite, 10% pyrite

Massive to stockwork chalcopyrite and pyrite hosted in brecciated grahitic mudstones



Treasure Island
 Drill core-channel cut comparison
 Drill Hole: TI-24-04
 48.60 m - 54.12 m (5.52 m)
 Channel cut NN1
28.08 gpt AuEq over 0.85 m
 (20.6 gpt Au, 63.6 gpt Ag, 5.04 % Cu)

5.52 METERS OF SULPHIDE-RICH INTERCEPT AT TREASURE ISLAND ASSAYS PENDING



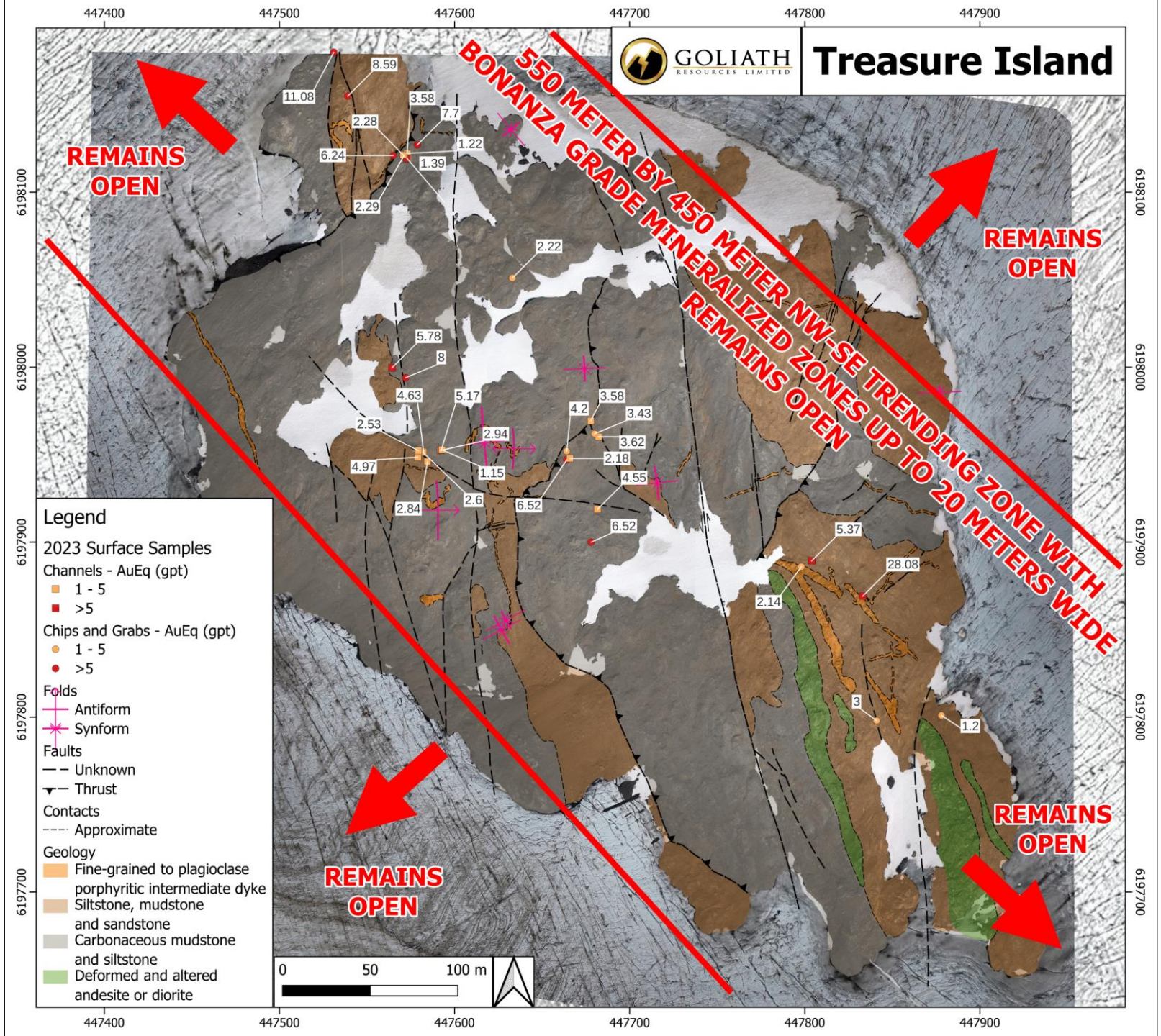
GOLD-RICH SURFACE SAMPLES SIMILAR TO DRILL CORE INTERCEPT AT DEPTH

Channel cut NN1
28.08 gpt AuEq over 0.85 m
 (20.6 gpt Au, 63.6 gpt Ag, 5.04 % Cu)





Treasure Island



550 METER BY 450 METER NW-SE TRENDING ZONE WITH BONANZA GRADE MINERALIZED ZONES UP TO 20 METERS WIDE

REMAINS OPEN

REMAINS OPEN

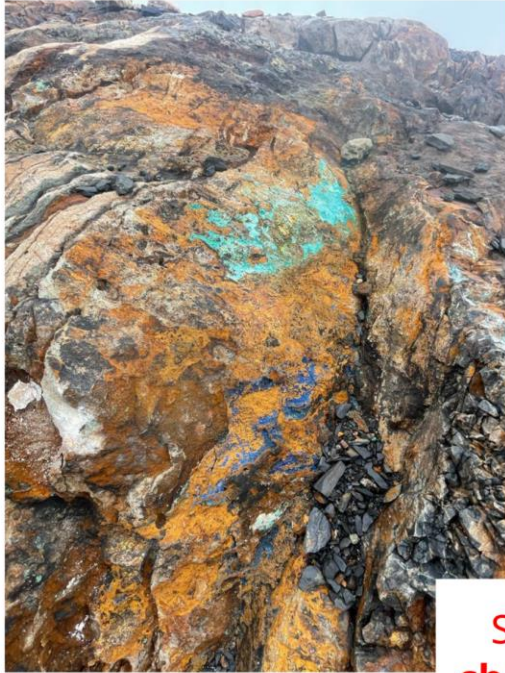
REMAINS OPEN

REMAINS OPEN



GOLIATH
RESOURCES LIMITED

Golddigger property - **NEW TREASURE ISLAND DISCOVERY**
500 METERS X 450 METERS - DRILL READY - REMAINS OPEN



Shears and veins with **massive chalcopyrite and pyrite** hosted in mudstone, siltstone and tuff units

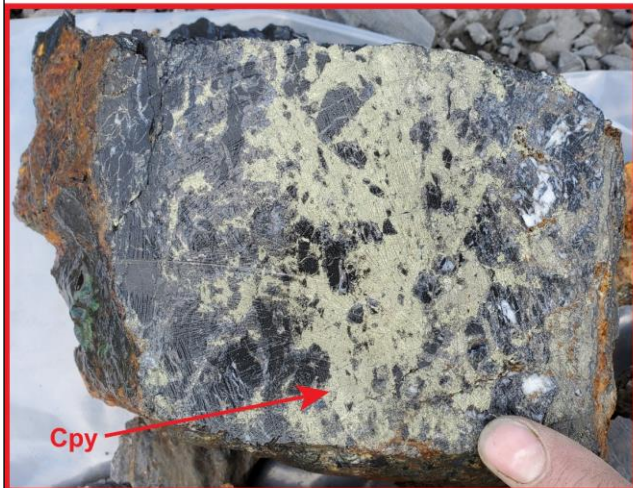


Channel cut NN1

28.08 gpt AuEq

(20.6 gpt Au, 63.6 gpt Ag, 5.04 % Cu)

Massive to stockwork chalcopyrite hosted in mudstones



ST115881

11.08 AuEq (gpt)

(0.04 gpt Au, 126.00 gpt Ag, 7.15% Cu)



Channel cut Treasure_RP_2

3.54 gpt AuEq over 2.48 m

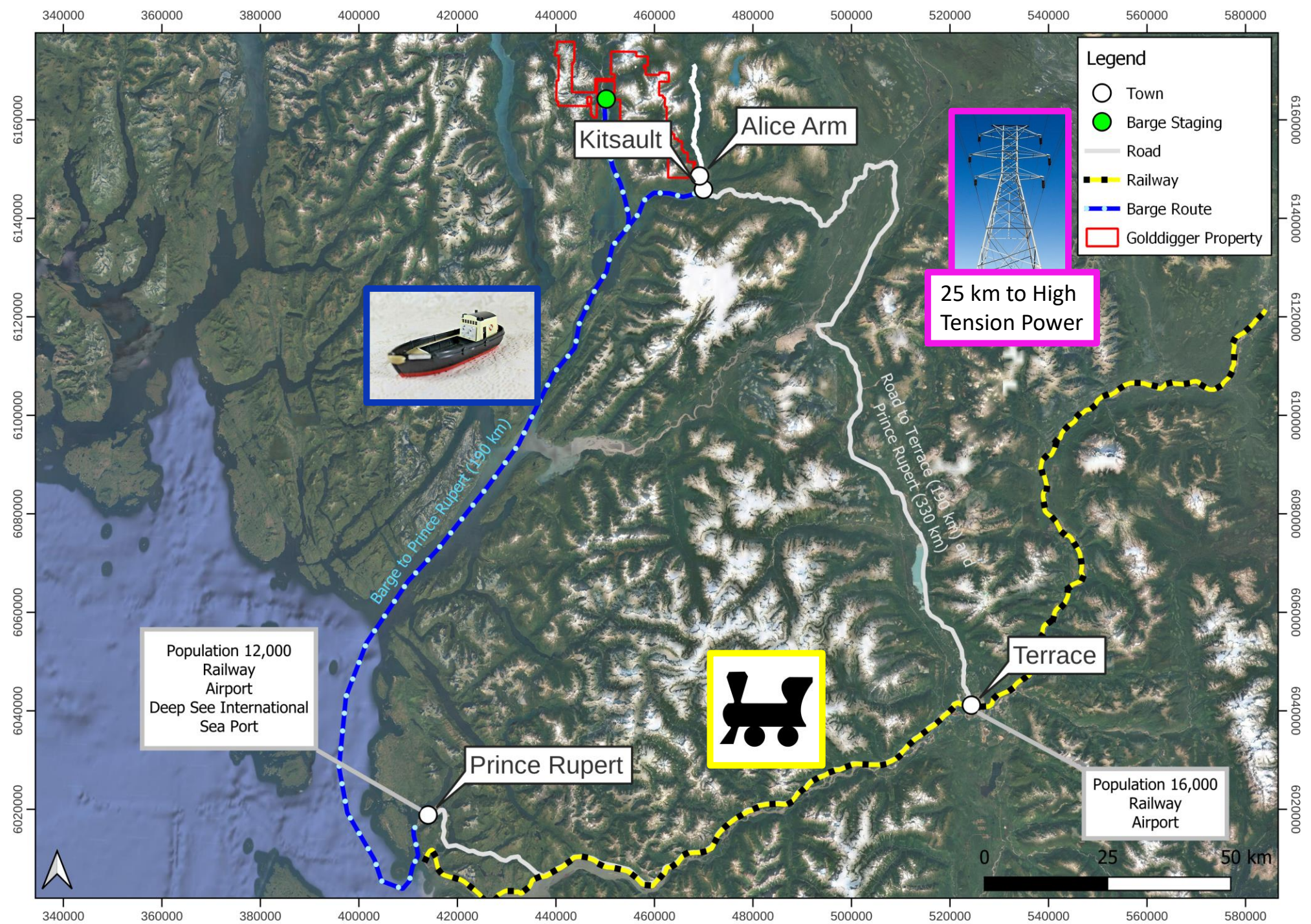
(0.13 gpt Au, 23.96 gpt Ag, 2.34 % Cu)

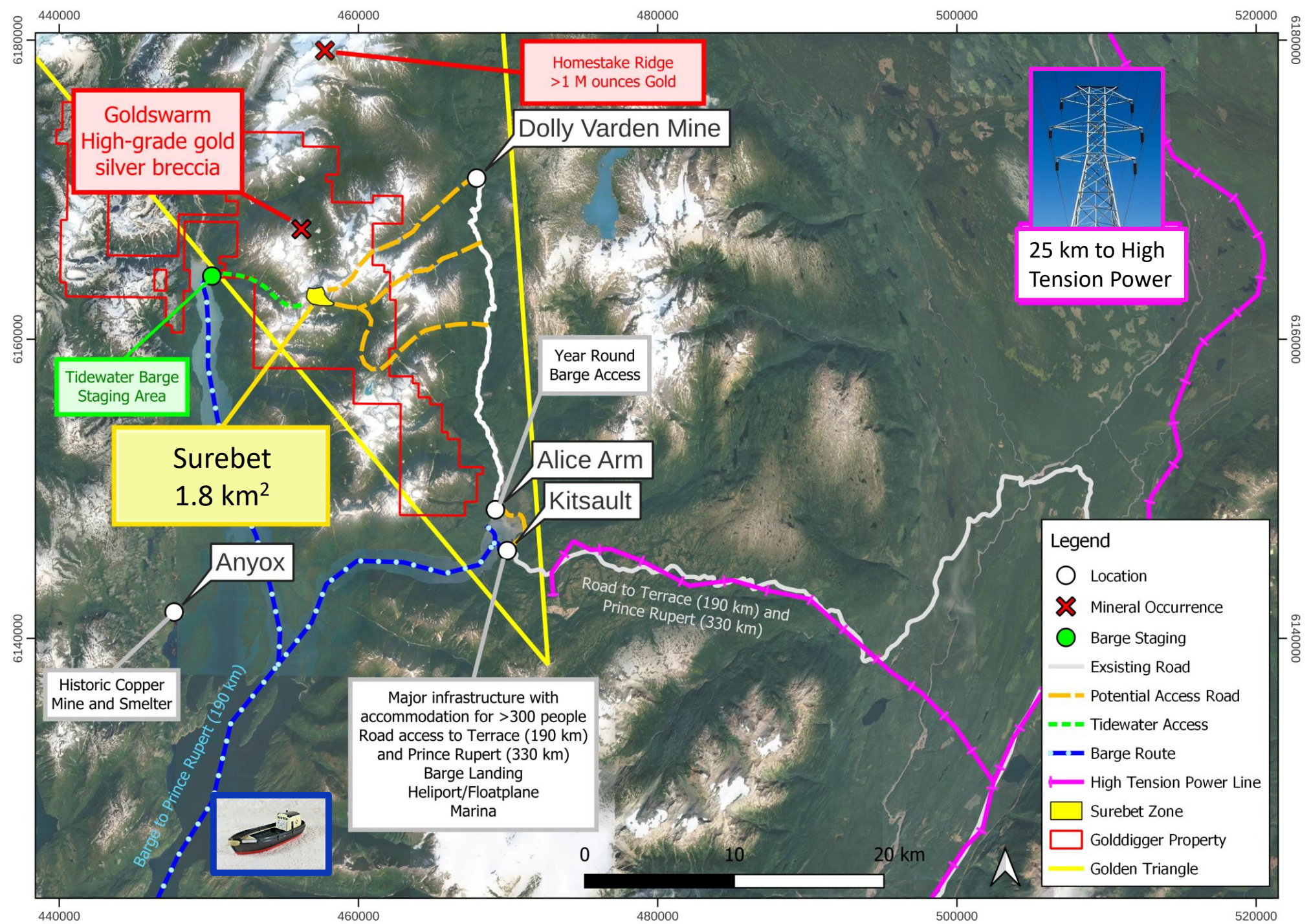
Massive chalcopyrite + pyrite in sheared quartz vein

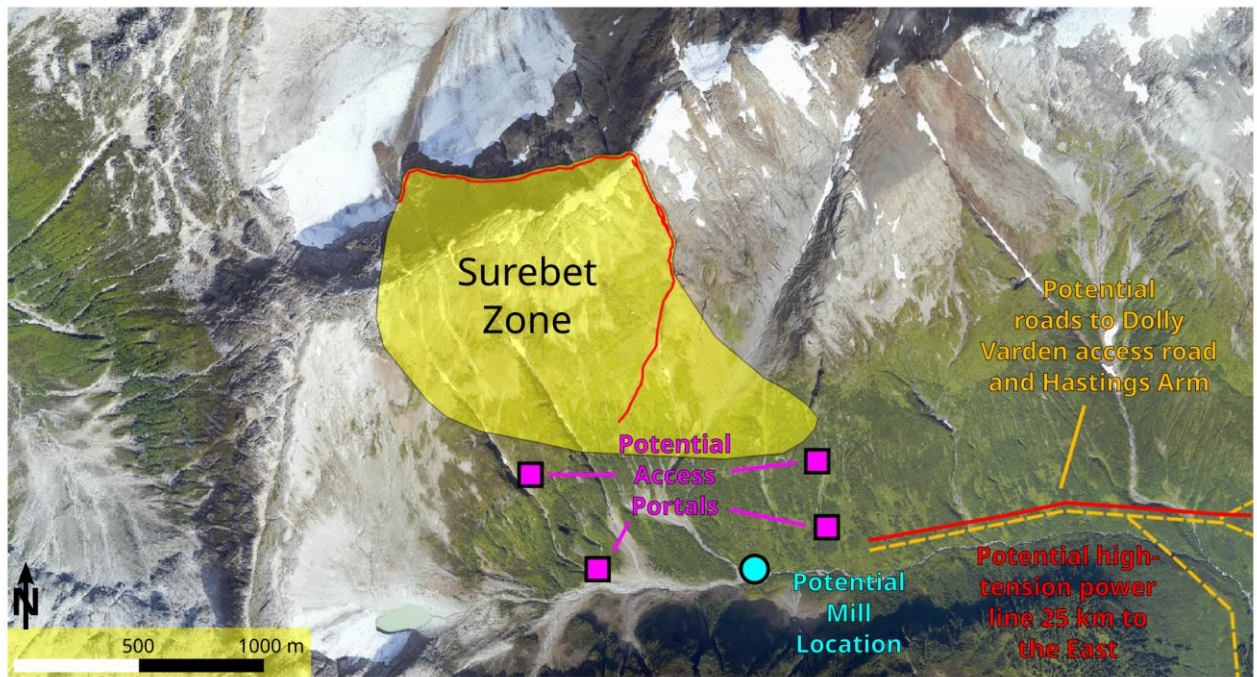
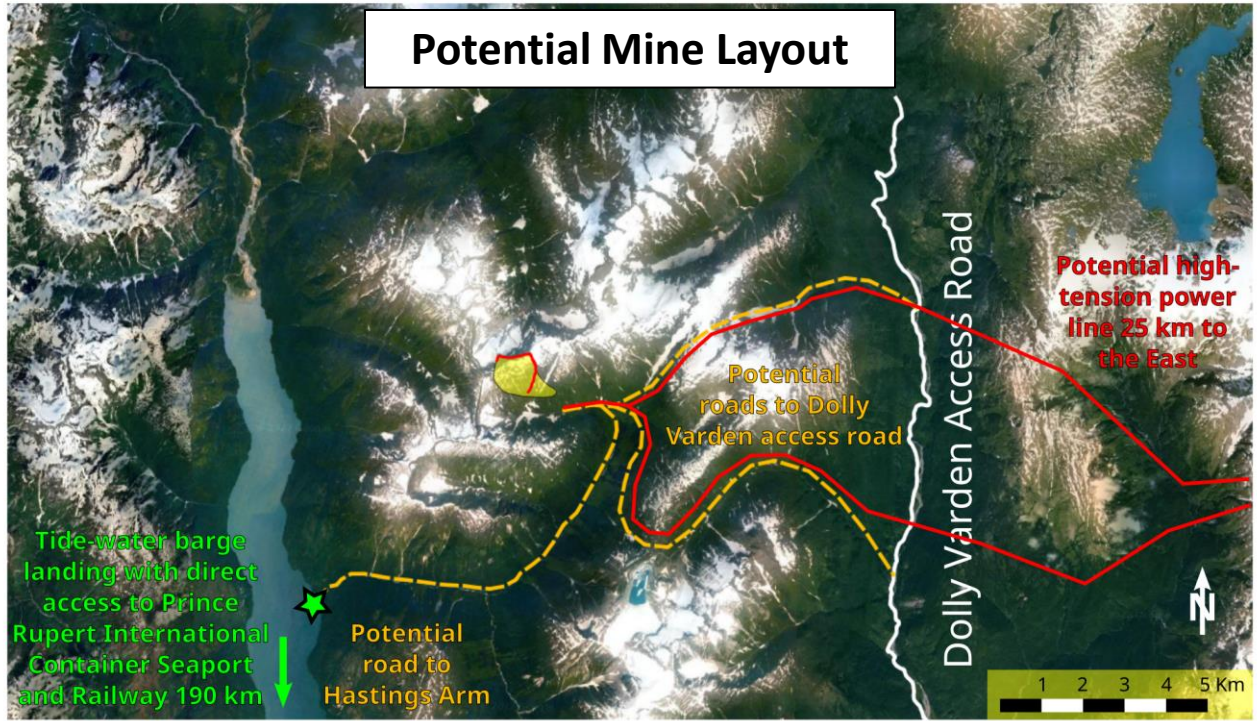


ST116045
8.00 AuEq (gpt)
(5.85 gpt Au,
20.70 gpt Ag,
1.43% Cu)

| Channel ID | | Length (m) | Au (gpt) | Ag (gpt) | Cu (%) | Pb (%) | Zn (%) | AuEq (gpt) |
|---------------|-----------|------------|----------|----------|--------|--------|--------|------------|
| Treasure_RP_2 | Interval | 2.48 | 0.13 | 23.96 | 2.34 | 0 | 0.01 | 3.54 |
| | Including | 1.44 | 0.13 | 37.76 | 3.97 | 0 | 0.01 | 5.87 |
| | Including | 0.33 | 0.2 | 126 | 14.45 | 0 | 0.02 | 20.98 |
| NN1 | Interval | 0.85 | 20.6 | 63.6 | 5.04 | 0 | 0.01 | 28.08 |



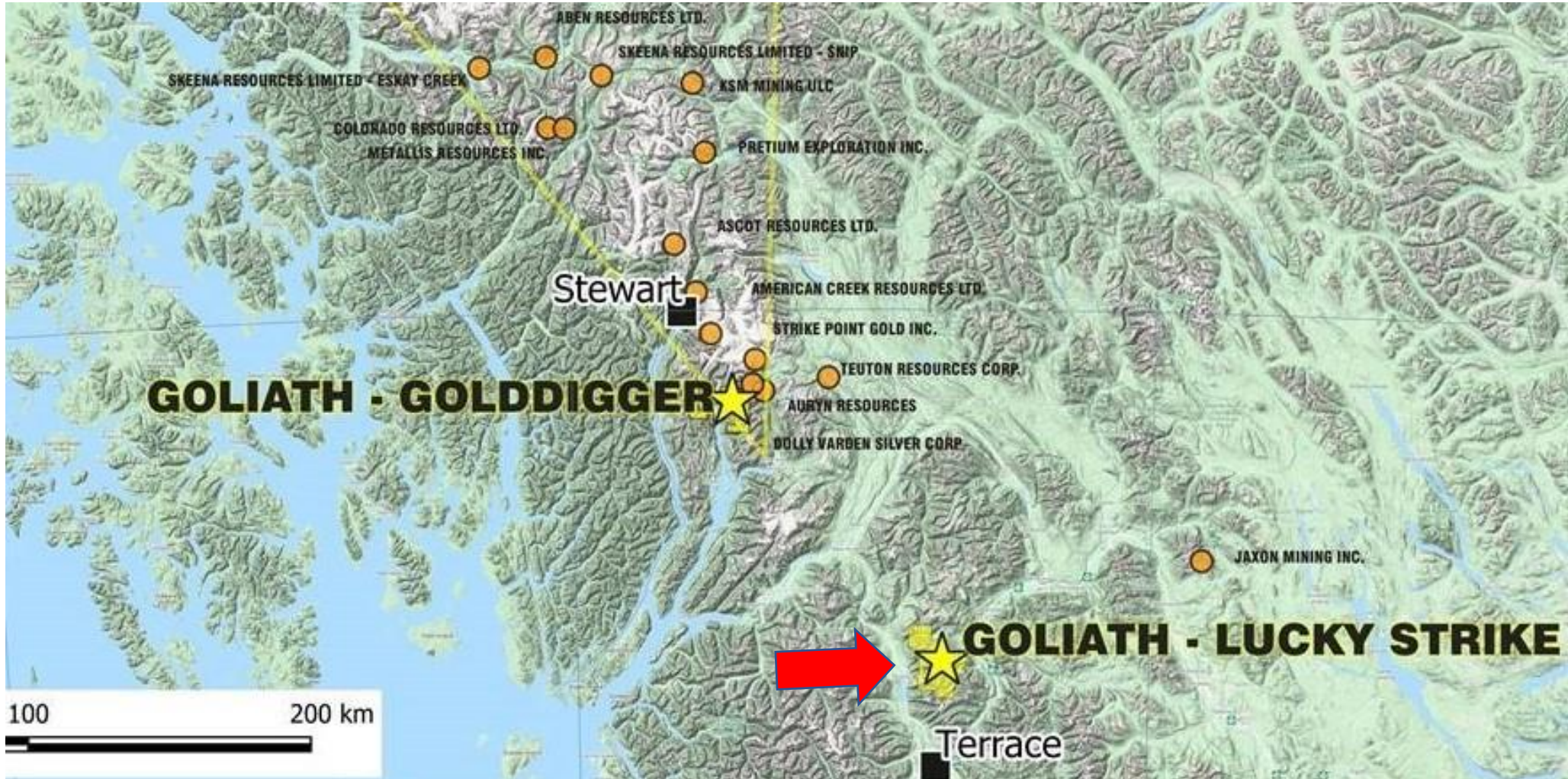






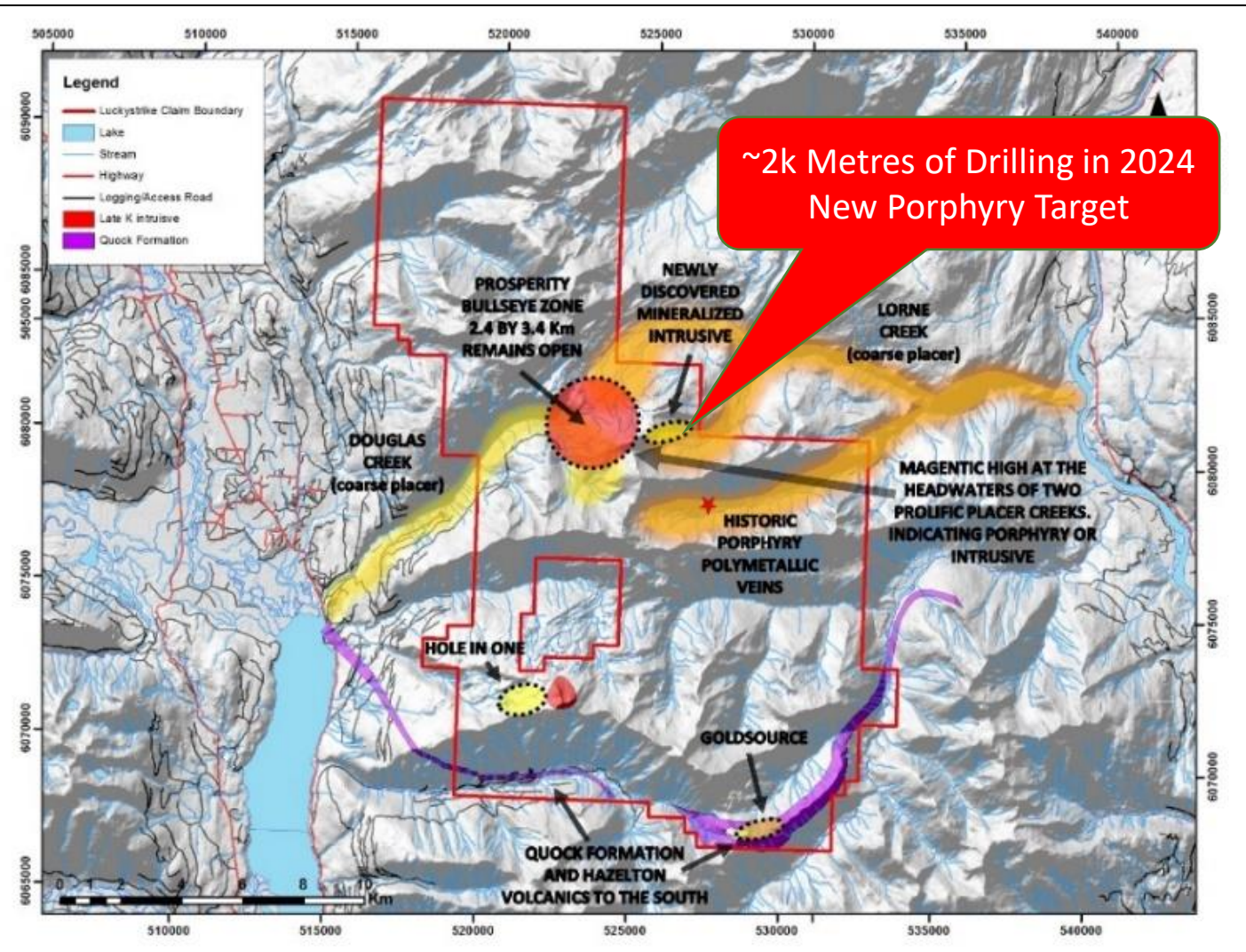
LUCKY STRIKE PROPERTY

Option to earn 100%





LUCKY STRIKE PROPERTY



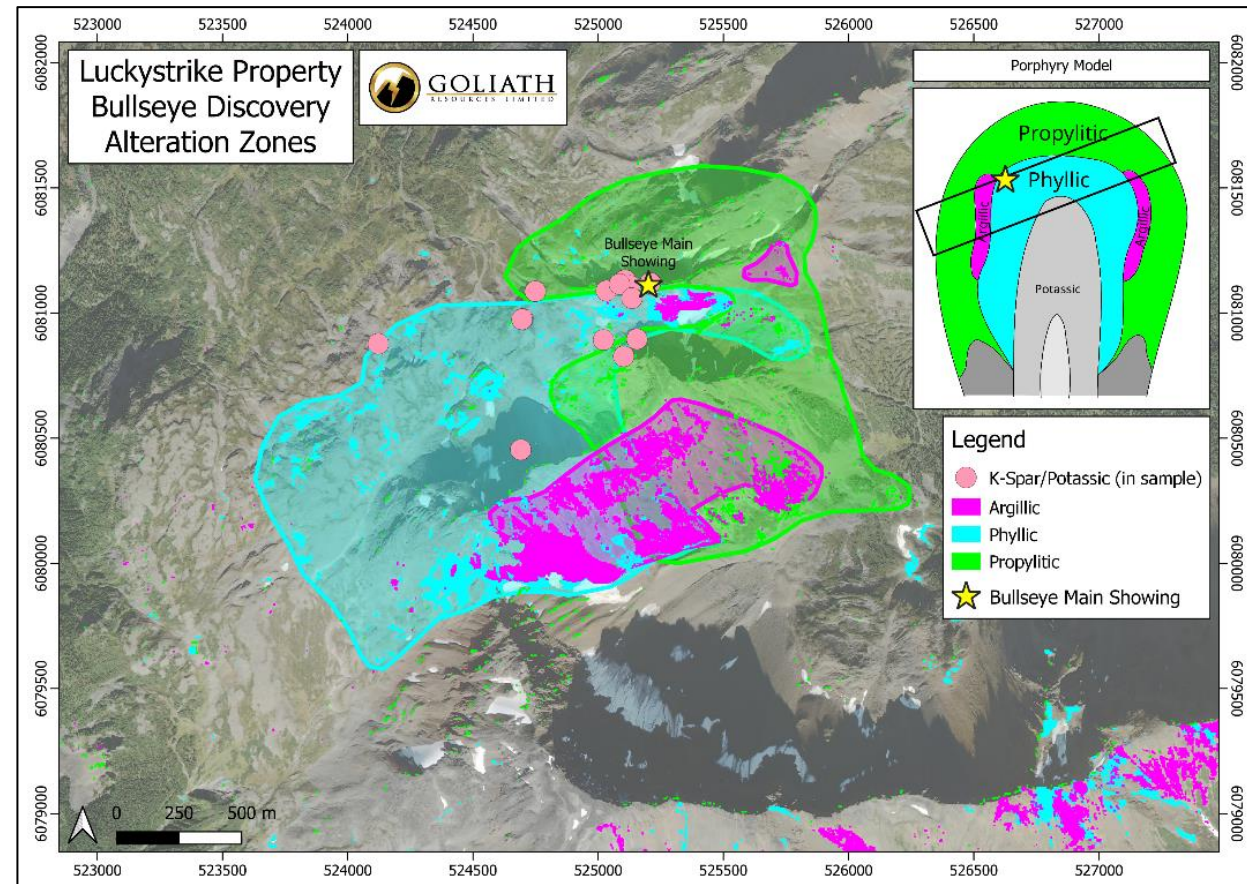
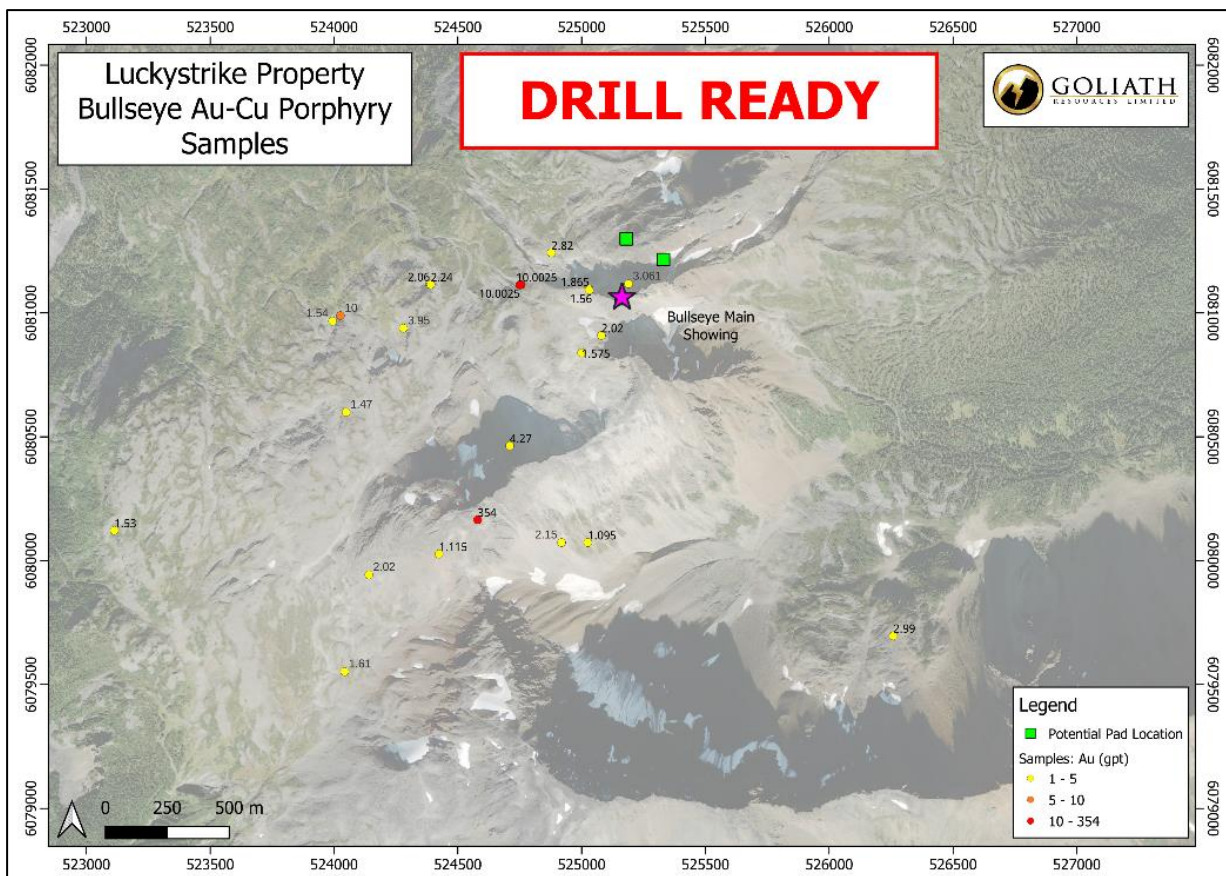
~2k Metres of Drilling in 2024
New Porphyry Target

- **Lucky Strike is 31,486 ha; has logging road access, a few km's to a major highway, power, rail and ~40 kilometres north by paved highway of infrastructure in Terrace, BC.**
- **Bullseye Gold-Copper Porphyry**
 - ~2,000 metres of diamond drilling planned in 2024 at new untested porphyry drill target.
 - Target grabs assayed up to 3.06 g/t Au, 1.8 g/t Ag and 1% Cu.
 - Drill target area defined by a large 1,200 x 700 metre alteration system at surface.
 - Coarse nuggets over 6 ounces gold drain the porphyry; most prolific placer creeks in district.



LUCKY STRIKE PROPERTY – Bullseye Porphyry

The Bullseye porphyry is untested diamond drill target consisting of coarse-grained intrusive units with mineralization, textures and potassic alteration (including K-Feldspar). Multiple Au-Cu mineralized grab samples were collected from the Bullseye porphyry drill target and assayed up to 3.06 g/t Au, 1.8 g/t Ag and 1% Cu.



The alteration pattern observed at the Bullseye drill target coincides with the top part of a porphyry system with strong concentric propylitic alteration surrounding a core of potassic and phyllic alteration bordered by domains of argillic alteration.



CONTACT INFORMATION

TSX-V: GOT OTCQB: GOTRF FSE: B4IF

For additional information
please contact:

Roger Rosmus

Founder and CEO

+1.416.488.2887

roger@goliathresources.com

Goliath Resources Limited

82 Richmond Street East

Toronto, ON, Canada

M5C 1P1

Rein Turna, P. Geo., is the qualified person as defined by National Instrument 43-101, for Goliath Resources projects, and supervised the preparation of, and has reviewed and approved, the technical information in this release. Further information regarding Goliath Resources properties can be sourced on-line at www.goliathresourcesltd.com.