



Corporate Presentation | December 2023
Restarting Europe's Largest Gold Plant

Investment Highlights



Europe's largest gold mill

- 6,000t / day capacity
- State of the art (2011 built)
- US\$ >400m replacement cost



Rich Resource + Upside

- 2moz M,I&I resource (SRK)
- 3m tons stockpile
- Exploration upside 2-4moz



Ready to produce

- 50-80koz p.a. production target
- 20+ years mine life
- Profitable from start



Capital raise

- EV <10% of replacement cost
- 7-year IRR > 80% p.a.
- Pathway to 2024 listing

Background

About us



- Experienced local management teams (ex Anglo Gold, Vale...)
- We buy state-of-the-art mines out of special situations
- Focus on making Laiva Gold a great success
- We own and operate Pilar and Tucano Gold mines in Brazil.

About the Laiva mine



- Built in 2011
- Several mill runs
- Underfunded



**Acquisition
out of
Administration**

Spin-off





1. Plant

- Largest in Europe (6ktpd)
- US\$ 400m+ cost

2. Pits

- Two pits
- 2moz (SRK)

3. Stock

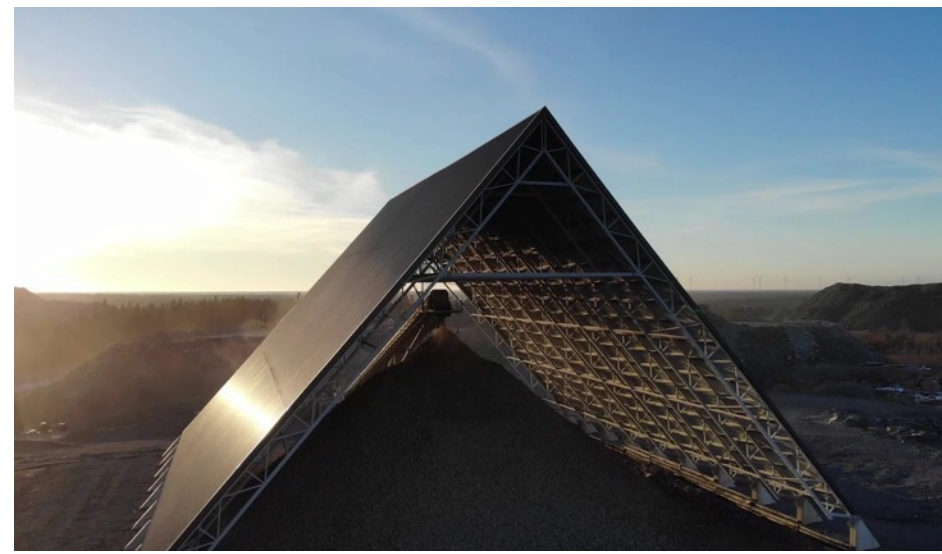
- 3m tons low-grade pile
- Sitting next to plant

4. Land

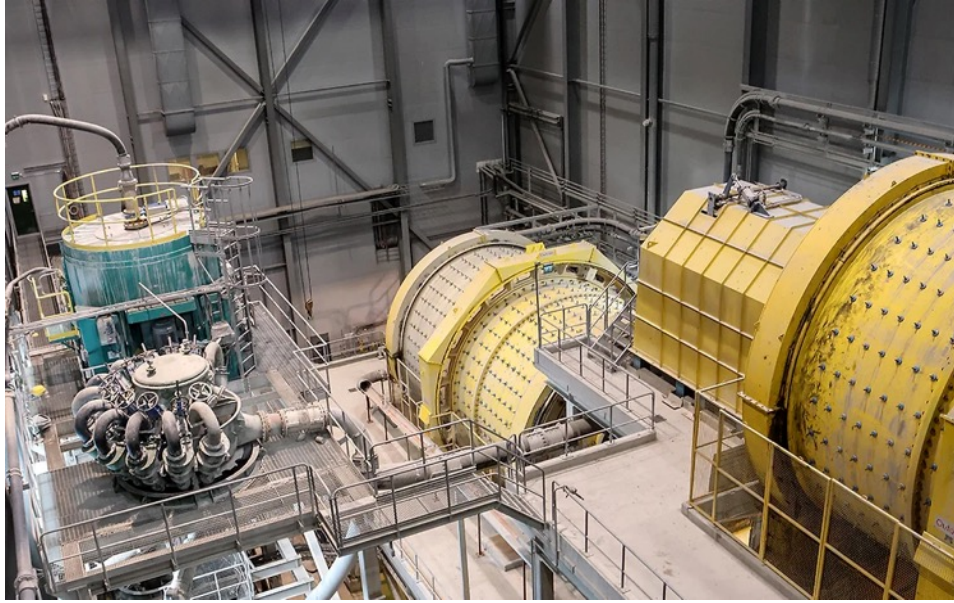
- 6,000 ha
- Exploration upside

Laiva Gold Inc. Capital Structure		
	CAD \$ (m)	Shares (m)
Shares to Pilar Shareholders for Laiva acquisition	\$ 16	32
Pre-money Mkt Cap	\$ 16	32
Private placement @ \$0.50/share	\$ 8.5	17
Post-money Mkt Cap	\$ 24	49

Largest Gold Plant in Europe capable of 6,000 tpd



Largest Gold Plant in Europe capable of 6,000 tpd



Two Open Pits – 50m depth expandable to 200+ m



Geology – significant upside to our conservative approach

- **Current resource info**

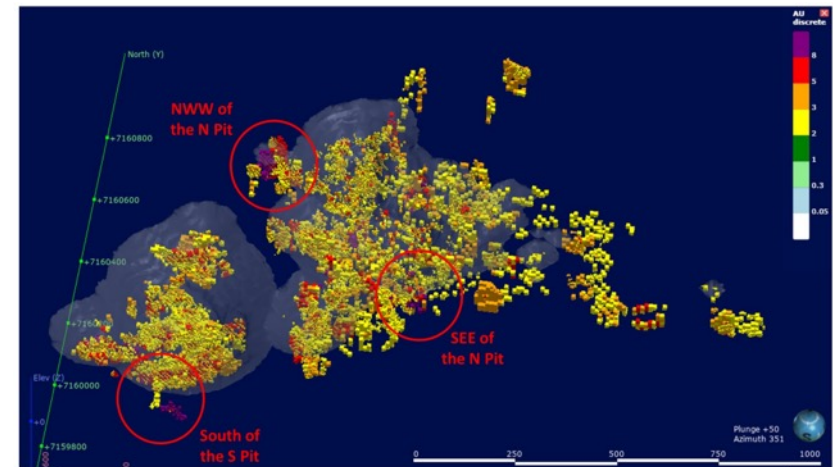
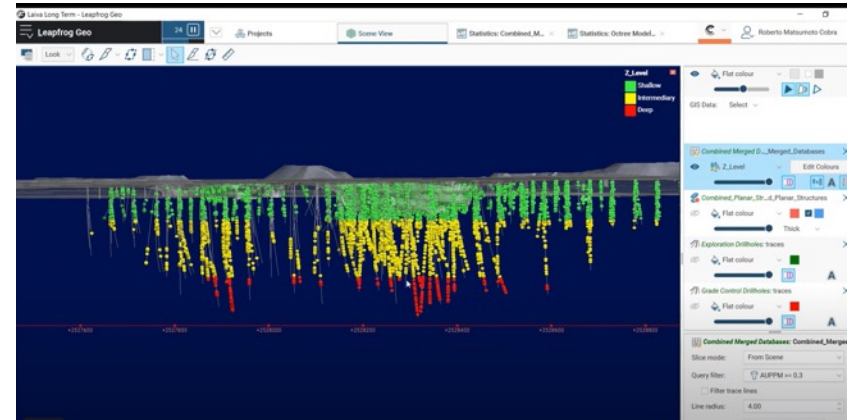
• 2014 SRK report:	2.00 Moz
--------------------	----------

- **Previous owners' exploration**

- 163km drilling from 3,636 holes
- Mineralisation in 4 areas around pits

- **Our approach**

- Our geologists built full Leapfrog 3D model
- Expect further drilling to yield 2-4 Moz



Bird's eye view showing the reserve's final pit and the block whose Au grades have more than 2.0 g/t. The red circles indicate the highest Au grades in the borders of the current pit, not fully included in the reserve's proposed final pit;

Potential to extend mine life to 30+ years and/or production to 120koz/year

Finland – one of the best mining jurisdictions in the world

- ▷ A world leading mining jurisdiction
- ▷ Fitch AA+ credit
- ▷ Politically stable (+EU, NATO)
- ▷ World-class infrastructure
- ▷ Mined by global leaders



Sale of Laiva Mine Waste Rock – A Busy Last 3 Months

- Laiva has signed a contract with Morenia Oy to sell our waste rock, estimated at 5m tonnes of Quartz diorite and granite (separate from our 3m tonne low grade stockpile)
- Removing the waste rock from the site has several benefits for the company - we receive payment from Morenia on a per-ton basis and are also able to recycle the rock for other projects in the area
- In Finland, mining companies pay a bond for any area with stockpiled waste rock
- By selling the rock, we can reuse the site without paying an additional bond



Chinese Delegate Visit to Laiva – 27 November 2023

- The Laiva team was pleased to host 26 visitors from a Chinese delegation consisting of mine managers, government officials and technical development engineers
- The group was led by Lasse Moilanen from Mining Finland, who had been hand-picked by the delegation
- They showed significant interest in our operation following boardroom presentation and tour of plant and North pit
- Such was their interest that they decided to spend more time at the mine than originally planned



Laiva Mine Winter Timber Harvest Underway



- As part of our efforts to look after the environment, Laiva has entered into a contract with a local company, Kellola Logging, to thin out the trees on our land
- Work is being carried out five days a week with two eight-hour shifts per day
- This will promote the growth of the remaining trees, allowing them to grow to a size suitable for construction
- Kellola is paying us the going commercial rate for the harvested timber while injecting money into the local economy



TSF Work to Adhere to High Finnish Environmental Standards - On Target to be Completed by Christmas



- The low-grade tailings dams internal and external ditches need to be cleaned yearly
- Ditches are in place to ensure clean water from the environment does not enter the dam, and avoid contaminated water from the dam going into the environment
- Both internal and external ditches have been neglected in the past, so we are bringing them up to the standard expected by the environmental authority
- The external ditches have never been properly established, as some areas of the ditch were only dug as far as the hard rock, stopping them from reaching the required depth
- We will drill and blast the rock to ensure the drainage ditches are dug to the correct depth, thus ensuring the water from nature is kept in nature

New Fleet Under Negotiation



- XDE130 Double axle rigid dump truck

- XE950G/XE950GA/XE950DA Mining hydraulic excavator



Water Pumping at South Pit on track for April Start



- Over the past few months we have been dewatering the South Pit
- The water is pumped from the pit to an upper bench and then to the central pump station
- We are slowly but surely making headway and should see a big difference in the water level by the end of the year



Renovation Work at Laiva Gold Guest House



Laiva Gold Production Restart Plans - Highlights



- ▷ Restart operations – 2024
- ▷ Team onsite – extensive planning ongoing
- ▷ Plant in excellent condition and needs only minor capex
- ▷ Aiming for first gold pour – 2024
- ▷ Production plan 50k oz in 2024/25
- ▷ Mid-term potential to reach 80k oz





Laiva Gold Mine

Restart Schedule

- Commence mining in South Pit
Month 1

- Commence mining in North Pit
Months 2

- Commence wall lift on LG Tailings dam
Months 2

- Test grades on low grade stockpile
Months 3

- Stockpile ore on ROM pad
Months 1 to 4

- Complete plant upgrade
Months 4

- Restart plant at 3k tpd, and first gold pour
Months 5

- Increase plant tonnage to 4k tpd
Month 8

- Run plant up to 6k tpd
Month 12



Experienced Finnish Management Team



**Jim
JACKSON**
General
Manager

Over 20 years of experience in the mining and Transport industries. Qualified mechanical fitter. Worked with BHP in mining, Placer Dome Porgera Mine construction. Newcrest Telfer gold mine in mining production



**Hanna
RANNIKKO**
Finance
Executive

Professional finance executive with long experience in multi-national business accounts. Over 13 years of experience in the mining industry and leading the finance department. Previously worked in Kevitsa mine.



**Raymond
BLOUNT**
Commercial
Executive

ND Purchasing management from the University of South Africa. 30 years of experience in Commercial Procurement & Supply Chain development. Experienced in ERP and BI application design, rollout and analysis.



**Toni
JUVEN**
Engineering
Manager

Over 10 years experience in the mining and metals industry sector. BSc in Mechanical and Production Engineering and BSc in Civil Engineering. Worked many different management and supervisor positions of the Laiva Mine.



**Max
FORSMAN**
Head
Geologist

25 years of experience in the mining industry. Worked with both underground and open pit mines + several years of experience as head of exploration. Worked as mining consultant — M.Sc in geology and mineralogy from the University of Oulu



**Percy
SCHOLZ**
Mining
Manager

Over 20 years open pit mining experience in precision metals and gems. Previously worked in South Africa's largest iron ore mine - Sishen. International mining experience.



**Jeremy
GRAY**
CEO & Director

- Senior roles at Morgan Stanley, Credit Suisse and Standard Chartered
- Co-Founder of Chancery AM
- Principal in Pilar, Faina and Laiva
- Founding investor in K92
- Laiva focus: Fund raising



**Charles
CHEBRY**
President &
Director

- BSc, CPA
- Experienced Senior Executive
- President on several TSXV listed companies
- Strong background in international resource sector.
- Laiva focus: Canadian listing



**Jim
JACKSON**
General Manager
& Director

- Over 20 years of experience in the mining and Transport industries.
- Qualified mechanical fitter.
- Worked with BHP in mining,
- Placer Dome Porgera Mine construction.
- Newcrest Telfer gold mine in mining production
- Laiva focus: Coordinating team on the ground



**Thomas
PUPPENDAHL**
Director & Legal

- Worked in M&A at Merrill Lynch, Ermgassen & Co and the Monitor Group.
- Co-Founder of Chancery Asset Management.
- Founding investor in K92 Mining Inc. (TSXV: KNT).
- Laiva focus: Corporate matters

Summary



\$400m asset in a world class location



Large resource with significant upside



Ready to go into highly profitable production



Strongly discounted valuation for high IRR



High potential for near-term liquidity



**LAIVA
GOLD**

Thank you

For more information please contact Head of IR Edward.Balme@LaivaGold.com

Appendices



Geology - Extensive Drill Program by Previous Owners

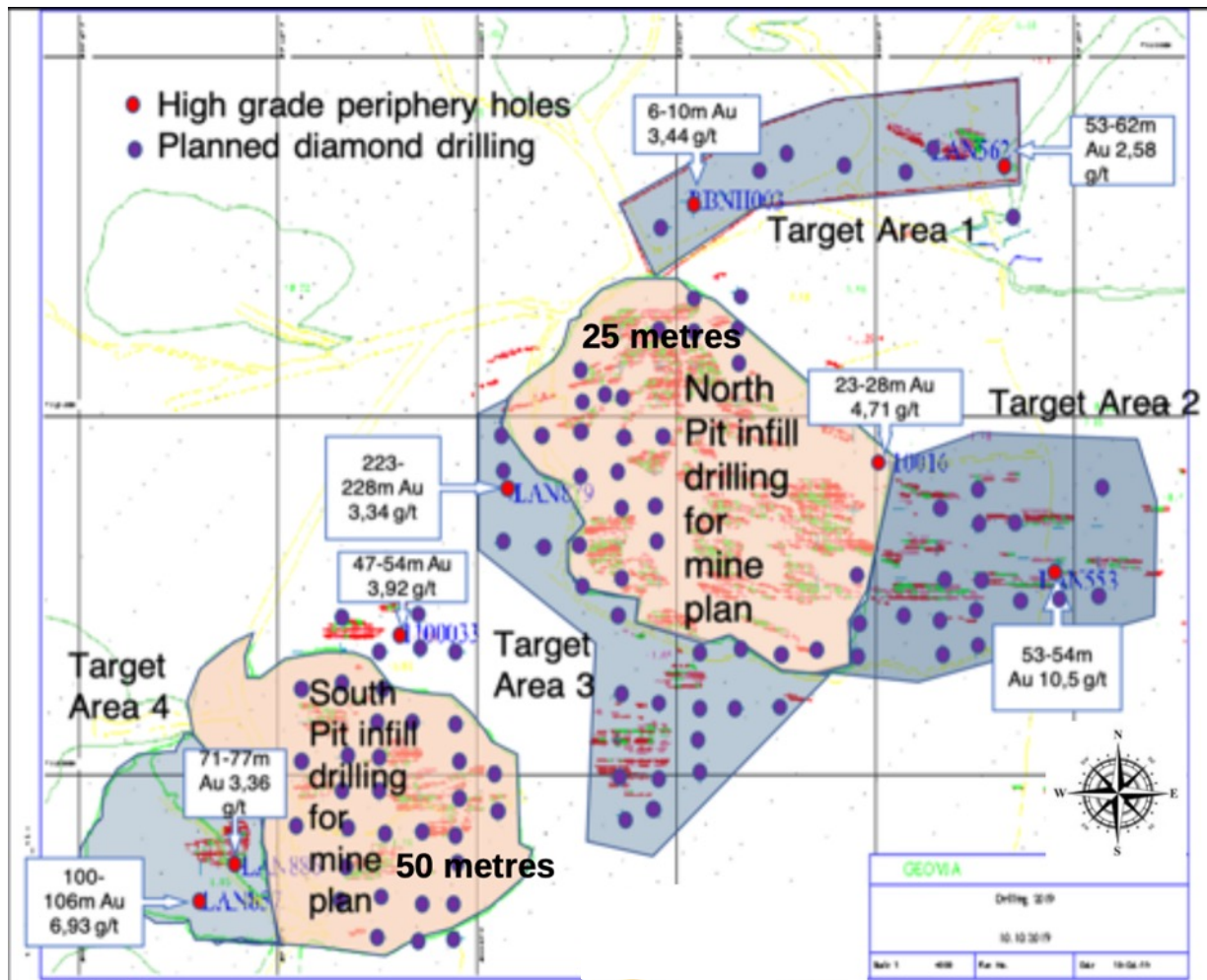


Table 1: Significant intercepts table of PAL1000 assay results

Hole ID	From (m)	To (m)	Interval (m)	True Width (m)	Azimuth (degrees)	Dip (degrees)	Grade Au (g/t)
19LV0035	118.15	122.15	4.00	3.107	360	50	2.01
	139.20	141.20	2.00	1.552	360	50	10.90
19LV0058	27.15	29.15	2.00	1.552	360	50	5.37
19LV0066	96.00	99.00	3.00	2.328	360	50	2.06
	115.00	121.00	6.00	4.656	360	50	1.71
19LV0067	41.30	44.30	3.00	2.328	360	50	1.58
	122.35	130.45	8.10	6.285	360	50	1.99
19LV0068	35.70	37.70	2.00	1.552	360	50	7.56
19LV0081	48.05	53.05	5.00	3.88	360	50	1.76
	96.80	99.80	3.00	2.328	360	50	1.06
19LV0082	93.65	97.65	4.00	3.104	360	50	2.00

DH	Interval		Thickness (m)	Au (g/t)
	From (m)	To (m)		
19LV0009	64.8	66.8	2	2.93
incl	64.8	65.8	1	4.12
incl	65.8	66.8	1	1.74
19LV0066	98	99	1	3.52
19LV0066	108	109	1	1.43
19LV0066	115	121	6	1.85
incl	116	117	1	9.99
19LV0067	43.3	44.3	1	3.63
19LV0068	35.7	36.7	1	16.48
19LV0068	24.7	25.7	1	1.57
19LV0068	35.7	37.7	2	10.63
19LV0081	48.05	49.05	1	3.72
19LV0081	52.05	53.05	1	2.42
19LV0081	97.8	98.8	1	1.66

- **2019 - 2021** – Drill program for 146 holes totalling 10,000 + metres
- Results support the long-term plan of merging all mines into one large pit with long mine life

Blast Movement Technologies to Minimise Dilution

BLAST MOVEMENT MONITOR SYSTEM OUR PROCESS

STEP 1 Activate the BMM

STEP 2 Drop BMM into hole

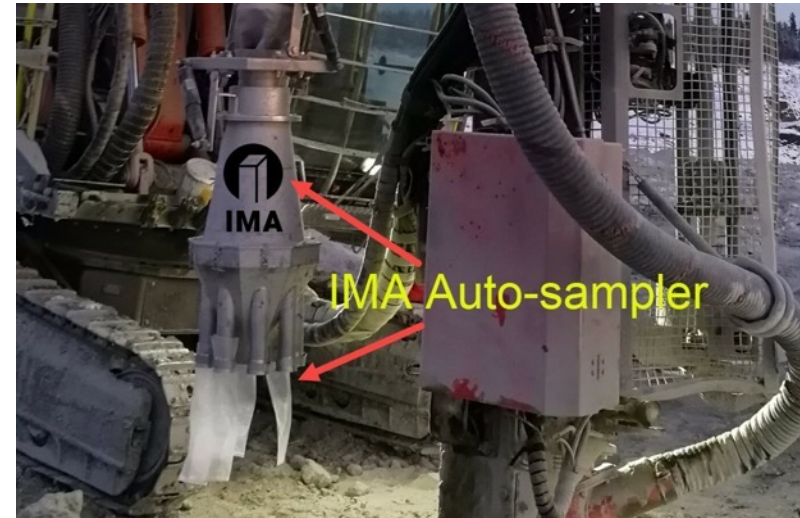
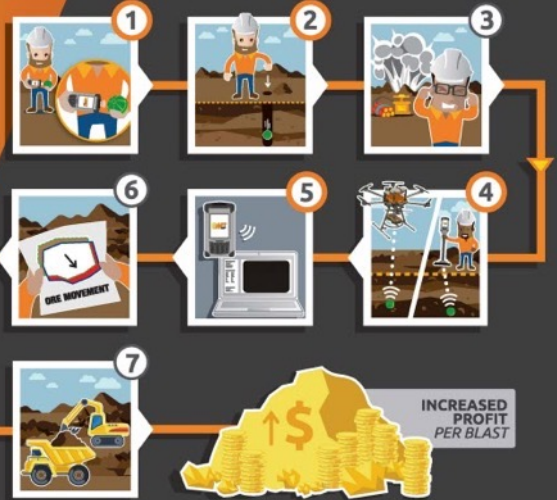
STEP 3 Blast

STEP 4 Detect BMM

STEP 5 Combine D&B, geology and BMM system data

STEP 6 Proprietary translation to define post blast ore polygons

STEP 7 Excavate new accurate ore location to maximise ore recovery



- In conjunction with new sampling, use blast movement technologies (BMT) to accurately map movement and location of ore after blasting.
- System was successfully used at Laiva before but then abandoned due to cost.
- New blasting software can learn from past behaviour of blasts, so does not have to be used on every blast



Mill Run 1

- Production up to 4,523 TPD for >4k oz per month over 4 months (average)
- Gold price crashed
- Hedged beyond production
- Too much debt

Mill Run 2

- Production avg 3,309 TPD
- 2.5k oz per month
- Issues around dilution, head grade, plant throughput
- Poor comms between mining and plant led to major stoppages

Mill Run 3

- Production avg 1,619 TPD
- <1k oz per month
- Dilution issues
- Lack of consumables
- Electricity price spike
- Underfunded

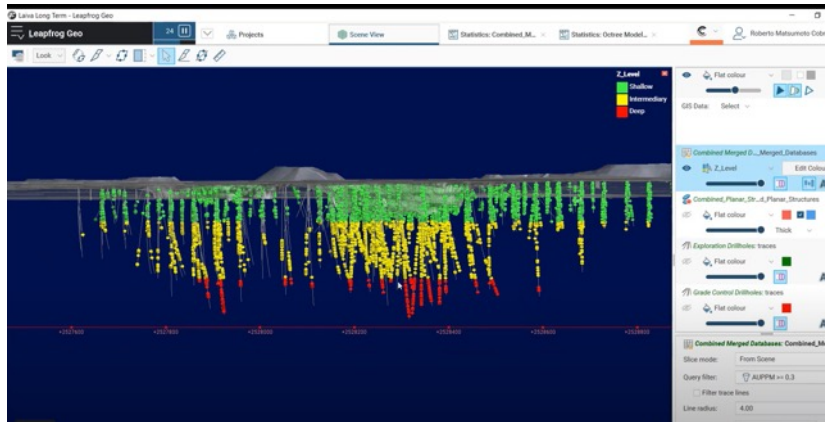
Our Acquisition

- Acquired from administrator
- Advantageous valuation
- 'Clean sheet'
- Purchased by Pilar Gold
- Span out to Pilar shareholders

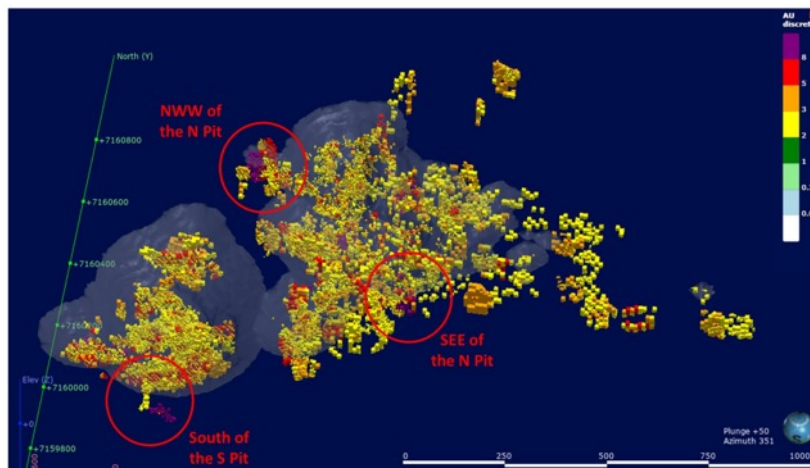
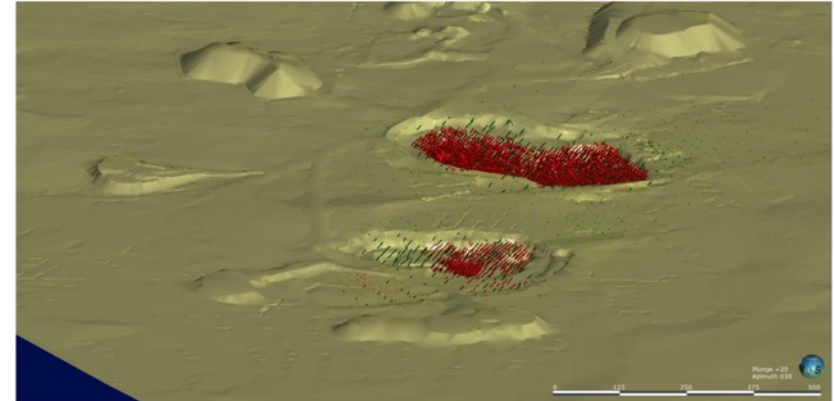
Note: Total Laiva Mill Capacity = 6,000 Tonnes per Day

Geology - Drillholes in Leapfrog Database

- Our Brazilian and Finnish geology teams have spent the last 4 months converting all historical drilling to leapfrog

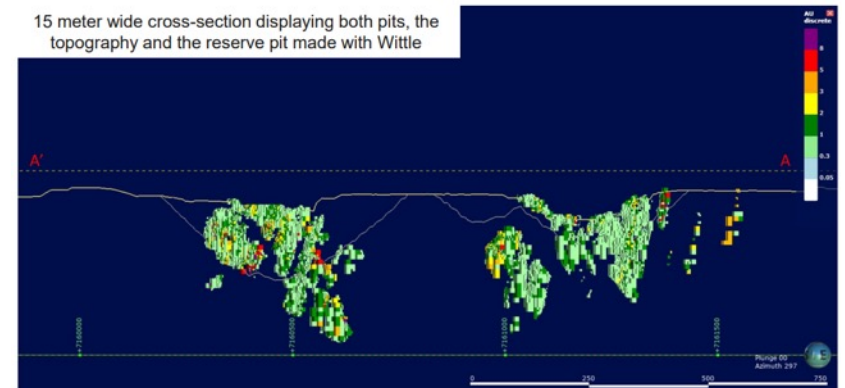


Green: Diamond DHs, orientated (exploration)
Red: RC and Blast Drillholes (Infill / operation)



Bird's eye view showing the reserve's final pit and the block whose Au grades have more than 2.0 g/t. The red circles indicate the highest Au grades in the borders of the current pit, not fully included in the reserve's proposed final pit;

15 meter wide cross-section displaying both pits, the topography and the reserve pit made with Wittle



Tapping into Laiva's 3m Ton Low-Grade Stockpile



- **Low-grade stockpile is an additional source of low-cost feed**
- **Expected grades of 0.3 - 0.8 g/t Au**
- **Stockpile is situated 200 metres from the plant**

Confidentiality & Disclaimer



Confidential Information

This presentation includes certain non-public Information of Laiva Gold that is being provided to the receiving party in connection with the receiving party's evaluation of a potential transaction relating to Laiva Gold's Laiva gold mining operations in Finland ("Transaction"). The Information is confidential and is subject to the terms of the Confidentiality Agreement between Laiva Gold and the receiving party.

No Representations

The presentation has been prepared to assist the receiving party in making their own evaluation of potential Transaction. Neither Laiva Gold nor any of its affiliates or their respective representatives makes any representation or warranty as to the accuracy or completeness of the presentation.

Forward-looking Statements

This presentation contains certain forward-looking information and forward-looking statements within the meaning of applicable securities legislation and may include future-oriented financial information. Forward-looking statements and forward-looking information included or incorporated by reference in this presentation relate to, among other things: the duration, extent and other implications of the novel corona virus (COVID-19) and any related restrictions and suspensions with respect to our operations, the strategic vision for the Company and expectations regarding expanding production capabilities and future financial or operational performance, including the conceptual life of mine plan for Laiva, Laiva Gold's production and cost guidance; and conversion of Mineral Resources to Mineral Reserves. Forward-looking statements or information generally identified by the use of the words "believe", "will", "advancing", "strategy", "plans", "budget", "anticipated", "expected", "estimated", "target", "objective" and similar expressions and phrases or statements that certain actions, events or results "may", "could", "should", "will be taken" or "be achieved", or the negative connotation of such terms, are intended to identify forward-looking statements and information. Although the Company believes that the expectations reflected in such forward-looking statements and information are reasonable, undue reliance should not be placed on forward-looking statements since the Company can give no assurance that such expectations will prove to be correct. The Company has based these forward-looking statements and information on the Company's current expectations and projections about future events and these assumptions include: tonnage of ore to be mined and processed; ore grades and recoveries; prices for gold remaining as estimated; currency exchange rates remaining as estimated; availability of funds for the Company's projects and future cash requirements; capital, decommissioning and reclamation estimates; the Company's Mineral Reserve and Resource estimates and the assumptions on which they are based; prices for energy inputs, labour, materials, supplies and services; no labour-related disruptions and no unplanned delays or interruptions in scheduled development and production; all necessary permits, licenses and regulatory approvals are received in a timely manner; and the Company's ability to comply with environmental, health and safety laws. The Company's previously announced guidance is included in this presentation and does not account for any possible adverse effects of COVID-19 to the Company's business and results of operations. While the Company considers these assumptions to be reasonable based on information currently available, they may prove to be incorrect. Accordingly, readers are cautioned not to put undue reliance on the forward-looking statements or information contained in this presentation. The Company cautions that forward-looking statements and information involve known and unknown risks, uncertainties and other factors that may cause actual results and developments to differ materially from those expressed or implied by such forward-looking statements and information contained in this and the Company has made assumptions and estimates based on or related to many of these factors. Such factors include, without limitation: fluctuations in gold prices; fluctuations in prices for energy inputs, labour, materials, supplies and services; fluctuations in currency markets; operational risks and hazards inherent with the business of mining (including environmental accidents and hazards, industrial accidents, equipment breakdown, unusual or unexpected geological or structural formations, cave-ins, flooding and severe weather); inadequate insurance, or inability to obtain insurance to cover these risks and hazards; employee relations; relationships with, and claims by, local communities and indigenous populations; the Company's ability to obtain all necessary permits, licenses and regulatory approvals in a timely manner or at all; changes in laws, regulations and government practices,

including environmental, export and import laws and regulations; legal restrictions relating to mining including those imposed in connection with COVID-19; risks relating to expropriation; increased competition in the mining industry.

Forward-looking statements and information are designed to help readers understand management's views as of that time with respect to future events and speak only as of the date they are made. Except as required by applicable law, the Company assumes no obligation and does not intend to update or to publicly announce the results of any change to any forward-looking statement or information contained or incorporated by reference to reflect actual results, future events or developments, changes in assumptions or changes in other factors affecting the forward-looking statements and information. If the Company updates any one or more forward-looking statements, no inference should be drawn that the Company will make additional updates with respect to those or other forward-looking statements. All forward-looking statements and information in this presentation are qualified in their entirety by this cautionary statement.

Technical Information

All technical information related to Laiva Gold's properties and the Company's mineral reserves and resources is available upon request.

All-in-Sustaining Costs (AISC)

AISC per gold oz sold is a non-IFRS measure based on guidance announced by the World Gold Council ("WGC") in September 2013 and updated in November 2018. The WGC is not a regulatory body and does not have the authority to develop accounting standards or disclosure requirements. The WGC has worked with its member companies to develop a measure that expands on IFRS measures and non-IFRS measures to provide visibility into the economics of a gold mining Company. Current IFRS measures used in the gold industry, such as operating expenses, do not capture all of the expenditures incurred to discover, develop and sustain gold production. The Company believes the AISC measure provides further transparency into costs associated with producing gold and will assist analysts, investors and other stakeholders of the Company in assessing its operating performance, its ability to generate free cash flow from current operations and its overall value. Combined AISC does not include corporate G&A.

Cautionary Note to U.S. Investors Concerning Estimates of Reserves and Resources

These estimates have been prepared in accordance with the requirements of Canadian securities laws, which differ from the requirements of U.S. securities laws. The terms "mineral resource", "measured mineral resource", "indicated mineral resource" and "inferred mineral resource" are defined in NI 43-101 and recognized by Canadian securities laws but are not defined terms under the U.S. Securities and Exchange Commission ("SEC") Guide 7 ("SEC Guide 7") or recognized under U.S. securities laws. U.S. investors are cautioned not to assume that any part or all of mineral deposits in these categories will ever be upgraded to mineral reserves. "Inferred mineral resources" have a great amount of uncertainty as to their existence, and great uncertainty as to their economic and legal feasibility. It cannot be assumed that all or any part of an "inferred mineral resource" will ever be upgraded to a higher category. Under Canadian securities laws, estimates of "inferred mineral resources" may not form the basis of feasibility or pre-feasibility studies. U.S. investors are cautioned not to assume that all or any part of an inferred mineral resource exists or is economically or legally mineable. In addition, the definitions of "Proven Mineral Reserves" and "Probable Mineral Reserves" under CIM standards differ in certain respects from the standards of the SEC. Accordingly, these mineral reserve and resource estimates and related information may not be comparable to similar information made public by U.S. companies subject to the reporting and disclosure requirements under the U.S. federal securities laws and the rules and regulations thereunder, including SEC Guide 7.

Numbers may not add due to rounding. **All dollar amounts in USD unless otherwise noted.**